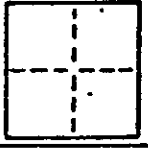


CORNER RECORD AP# 70-321-42

COUNTY OF MARIN T. _____ R. _____ MERIDIAN _____ CALIFORNIA

CORNER TYPE: GOVT. CORNER MEANDER RANCHO CONTROL OTHER

CORNER IDENTIFICATION — DATE OF VISIT NOV 19 91



CORNER — LEFT AS FOUND FOUND AND TAGGED REESTABLISHED OBLITERATED CORNER RESULT

PHYSICAL DESCRIPTION OF CORNER FOUND; EVIDENCE AND METHOD USED TO IDENTIFY OR REESTABLISH

BASIS OF BEARING FOUND SUBDIVISION MONUMENTS AS SHOWN 1 PM 94

LARKSPUR

PHYSICAL DESCRIPTION OF MONUMENTS-RESULT OR PERPETUATED

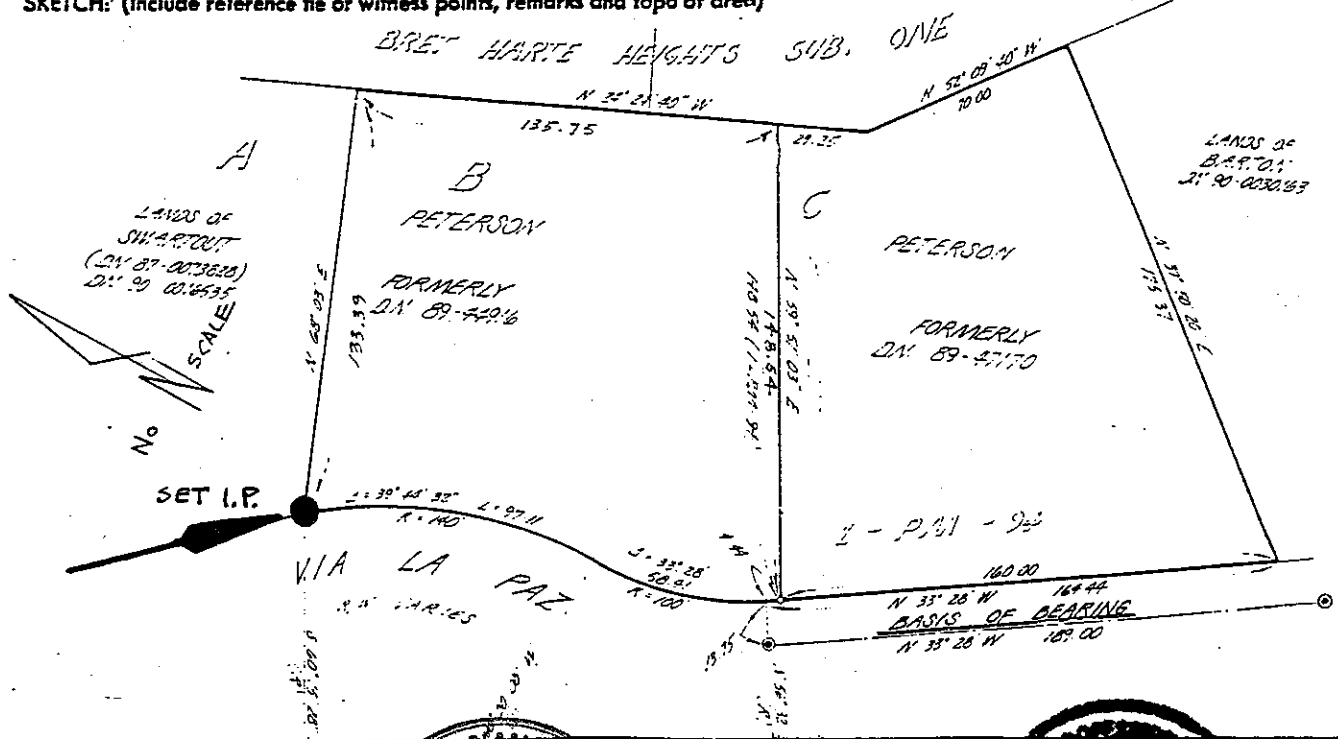
SET 3/4" IRON PIPE & PLASTIC PLUG RCE 15945

CALIFORNIA COORDINATE SYSTEM ORDER: FIRST SECOND THIRD

STATIONS USED: NGS (USC & GS) STATE COUNTY OTHER STATION _____

ZONE _____ ELEVATION _____ NORTHINGS (N) _____ EASTINGS (E) _____

SKETCH: (Include reference tie or witness points, remarks and topo of area)



SURVEYOR'S CERTIFICATE: THIS CORNER RECORD WAS PREPARED BY ME OR UNDER MY SUPERVISION AND EXAMINED AND FOUND CORRECT IN DIRECTION IN CONFORMANCE WITH THE SURVEYORS ACT ON NOV 8 19 91

SIGNED: W. S. [Signature]
 L.S. or R.C.E. No. 15945

PROFESSIONAL SURVEYOR
 REGISTERED IN THE STATE OF CALIFORNIA
 No. 15945
 CIVIL ENGINEER

COUNTY SURVEYOR'S CERTIFICATE: THE CORNER RECORD WAS EXAMINED AND FOUND CORRECT BY: _____ TITLE: _____

DOCUMENT No. _____

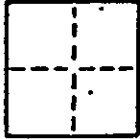
STATEMENT ON BACK OF SHEET: YES NO

CORNER RECORD AP# 70-321-42

COUNTY OF MARIN T. _____ R. _____ MERIDIAN CALIFORNIA

CORNER TYPE: GOVT. CORNER MEANDER RANCHO CONTROL OTHER

CORNER IDENTIFICATION — DATE OF VISIT NOV 19 91



CORNER — LEFT AS FOUND FOUND AND TAGGED REESTABLISHED OBLITERATED CORNER RESULT

PHYSICAL DESCRIPTION OF CORNER FOUND; EVIDENCE AND METHOD USED TO IDENTIFY OR REESTABLISH

BASIS OF BEARING FOUND SUBDIVISION MONUMENTS AS SHOWN 1 PM 94.

LARKSPUR

PHYSICAL DESCRIPTION OF MONUMENTS. RESULT OR PERPETUATED

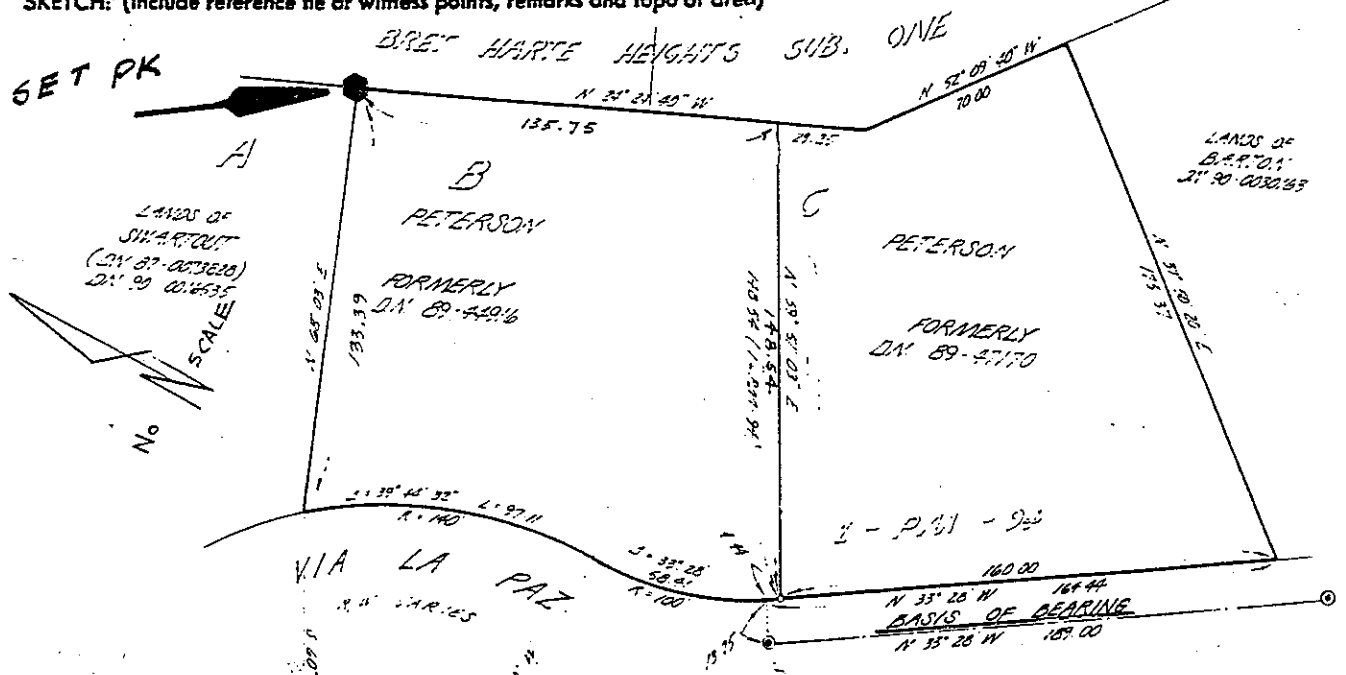
SET PK NAIL ON ROOT

CALIFORNIA COORDINATE SYSTEM ORDER: FIRST SECOND THIRD

STATIONS USED: NGS (USC & GS) STATE COUNTY OTHER STATION _____ STATION _____

ZONE _____ ELEVATION _____ NORTHINGS (Y) _____ EASTINGS (X) _____

SKETCH: (Include reference tie or witness points, remarks and topo of area)



SURVEYOR'S CERTIFICATION NO. 15945

THIS CORNER RECORD WAS PREPARED BY ME OR UNDER MY DIRECTION IN CONFORMANCE WITH THE LAND SURVEYORS ACT ON NOV 19 91

SIGNED: W. S. [Signature]

L.S. or R.C.E. No.: 15945

exp 6/30/95

PROFESSIONAL SURVEYOR STATE OF CALIFORNIA

COUNTY OF MARIN

THE CORNER RECORD WAS REVIEWED AND EXAMINED AND FILED 11 19 91

BY: [Signature]

TITLE: _____

DOCUMENT No. _____

STATEMENT ON BACK OF SHEET YES NO

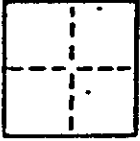
PROFESSIONAL SURVEYOR STATE OF CALIFORNIA

CORNER RECORD AP# 70-321-42

COUNTY OF MARIN T. _____ R. _____ MERIDIAN _____ CALIFORNIA

CORNER TYPE: GOVT. CORNER MEANDER RANCHO CONTROL OTHER

CORNER IDENTIFICATION — DATE OF VISIT NOV 19 91



CORNER — LEFT AS FOUND FOUND AND TAGGED REESTABLISHED OBLITERATED CORNER RESULT

PHYSICAL DESCRIPTION OF CORNER FOUND, EVIDENCE AND METHOD USED TO IDENTIFY OR REESTABLISH

BASIS OF BEARING FOUND SUBDIVISION MONUMENTS AS SHOWN 1 PM 94

LARKSPUR

PHYSICAL DESCRIPTION OF MONUMENTS, RESULT OR PERPETUATED

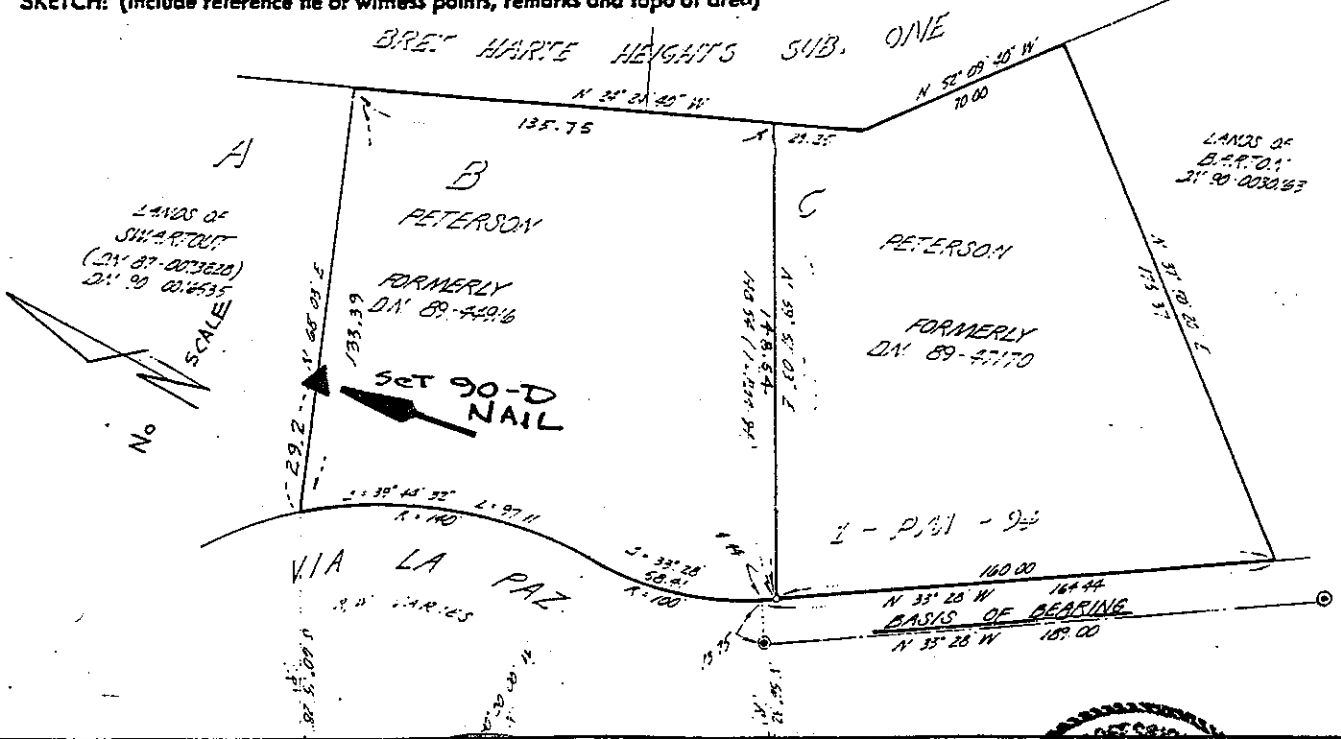
SET 90-D NAIL

CALIFORNIA COORDINATE SYSTEM ORDER: FIRST SECOND THIRD

STATIONS USED: NGS (USC & GS) STATE COUNTY OTHER STATION _____ STATION _____

ZONE _____ ELEVATION _____ NORTHINGS (Y) _____ EASTINGS (X) _____

SKETCH: (Include reference tie or witness points, remarks and topo of area)



SURVEYOR'S CERTIFICATE

THIS CORNER RECORD WAS PREPARED BY W. S. [Signature] AND EXAMINED AND FILED IN THE OFFICE OF THE COUNTY SURVEYOR ON Nov 8 19 91 IN CONFORMANCE WITH THE ACTS OF CONGRESS AND THE STATUTES OF THE STATE OF CALIFORNIA.

SIGNED: W. S. [Signature] No. 15945

L.S. or R.C.E. No.: 15945

Professional Engineer Seal: **W. S. [Signature]**, No. 15945, State of California.

COUNTY SURVEYOR'S OFFICE

THE CORNER RECORD WAS EXAMINED AND FILED IN THE OFFICE OF THE COUNTY SURVEYOR ON Nov 8 19 91 AND EXAMINED AND FILED BY [Signature] TITLE: _____

DOCUMENT No. _____

STATEMENT ON BACK OF SHEET YES NO

Professional Engineer Seal: **[Signature]**, State of California.