

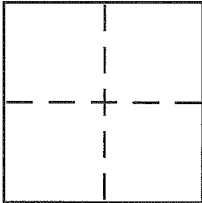
**CORNER RECORD**

Document Number APN 70-321-39

City of GREENSBORO

County of MAZON, California

Brief Legal Description LOT 1599



**CORNER TYPE**

Government Corner  Control   
Meander  Property   
Rancho  Other   
Date of Survey 10-11-13

**COORDINATES (Optional)**

N. \_\_\_\_\_  
E. \_\_\_\_\_  
Zone \_\_\_\_\_ NAD27  NAD83   
NAD83 Epoch \_\_\_\_\_  
Elev. \_\_\_\_\_  
Vert. Datum: NGVD29  NAVD88   
Meas. Units: Metric  Imperial

Corner - Left as found  Found and tagged  Established  Reestablished  Rebuilt

Identification and type of corner found: Evidence used to identify or procedure used to establish or reestablish the corner:

FOUND STREET MON PER 10 RM1  
FOUND 5/8" REBAR AND CAP "PLS 7053" PER CORNER RECORD  
AS SHOWN ON SHEET 2.

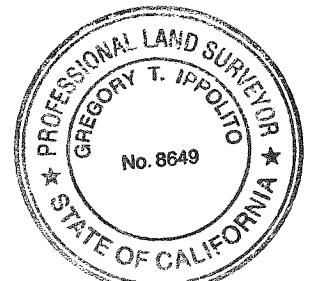
A description of the physical condition of the monument as found and as set or reset:

SET 5/8" REBAR AND CAP "PLS 8649"  
SET 1" IRON PIPE + PLASTIC PLUG "PLS 8649"  
AS SHOWN ON SHEET 2.

**SURVEYOR'S STATEMENT**

This Corner Record was prepared by me or under my direction in conformance with the Land Surveyor's Act on 1-7-14

Signed [Signature] P.L.S or R.C.E. No. PLS 8649



**COUNTY SURVEYOR'S STATEMENT**

This Corner Record was received NOVEMBER 5, 2013

and examined and filed JANUARY 7, 2014

Signed [Signature] P.L.S or R.C.E. No. 7821

Title DEPUTY CO. SURVEYOR

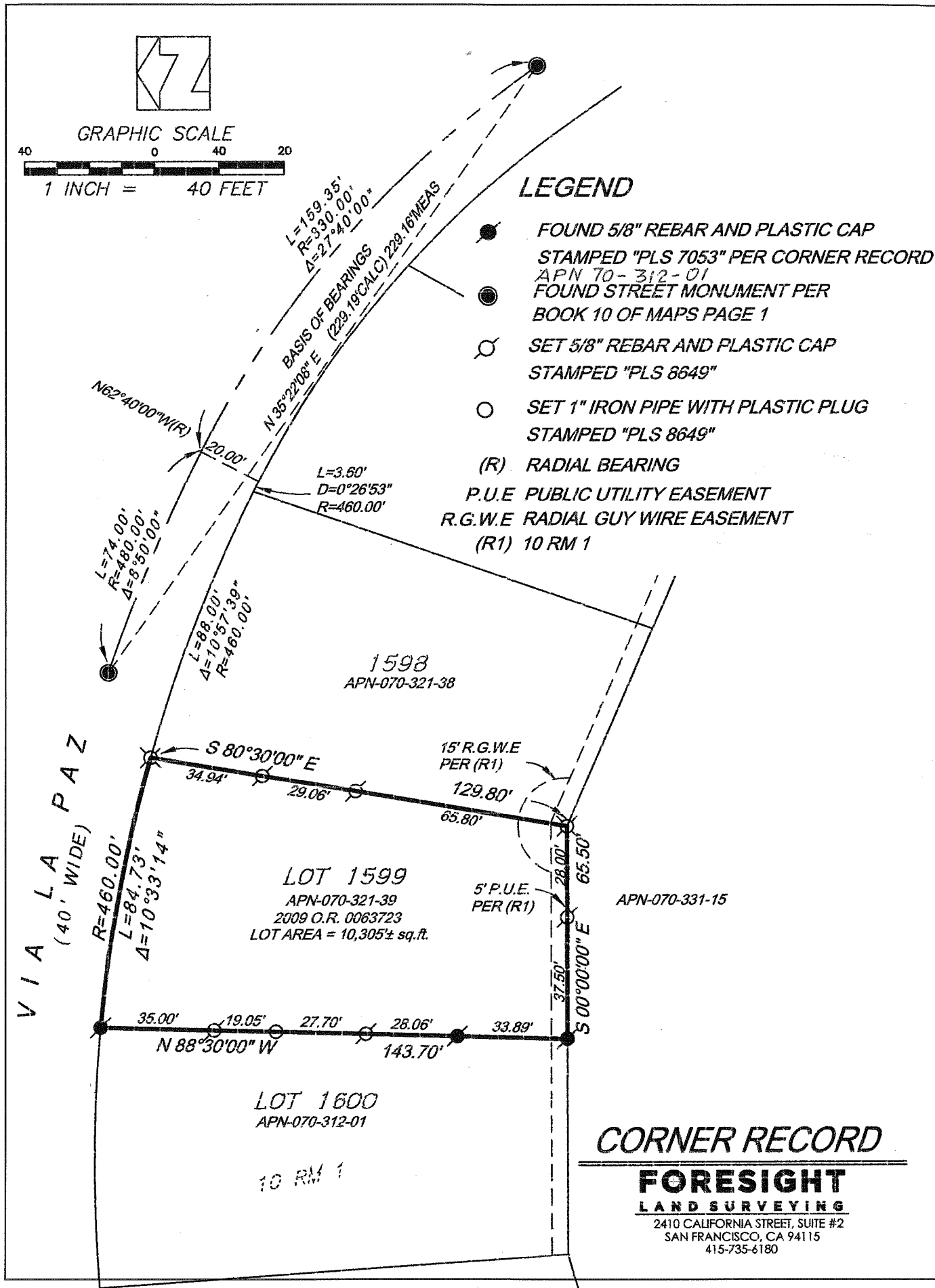


County Surveyor's Comment \_\_\_\_\_



### LEGEND

- FOUND 5/8" REBAR AND PLASTIC CAP STAMPED "PLS 7053" PER CORNER RECORD APN 70-312-01
- FOUND STREET MONUMENT PER BOOK 10 OF MAPS PAGE 1
- SET 5/8" REBAR AND PLASTIC CAP STAMPED "PLS 8649"
- SET 1" IRON PIPE WITH PLASTIC PLUG STAMPED "PLS 8649"
- (R) RADIAL BEARING
- P.U.E PUBLIC UTILITY EASEMENT
- R.G.W.E RADIAL GUY WIRE EASEMENT (R1) 10 RM 1



## CORNER RECORD

**FORESIGHT**  
**LAND SURVEYING**  
 2410 CALIFORNIA STREET, SUITE #2  
 SAN FRANCISCO, CA 94115  
 415-735-6180