

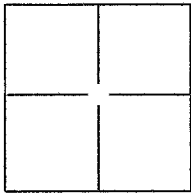
CORNER RECORD

Document Number 070-321-08

City of LARKSPUR

County of MARIN, California

Brief Legal Description LOTS 1577, 1578, & 1579 AS SHOWN ON THE MAP OF GREENBRAE SUBDIVISION NO. FOURTEEN - 10 MAPS 1



CORNER TYPE

Government Corner Control
 Meander Property
 Rancho Other

Date of Survey 02/05/14

COORDINATES(Optional)

N. _____
 E. _____
 Zone _____ NAD27 NAD83
 NAD83 Epoch _____
 Elev. _____
 Vert. Datum: NGVD29 NADV88
 Meas. Units: Metric Imperial

Corner - Left as found Found and tagged Established Reestablished Rebuilt

Identification and type of corner found: Evidence used to identify or procedure used to establish or reestablish the corner:

FOUND CENTERLINE MONUMENTS AS SHOWN ON 10 MAPS 1. SEE REVERSE

A description of the physical condition of the monument as found and as set or reset: _____

SET 3/4" X 24" IRON PIPE AND CAP LS 7973 UNLESS NOTED OTHERWISE, SEE REVERSE.

SURVEYOR'S STATEMENT

This Corner Record was prepared by me or under my direction in conformance with the Land Surveyor's Act on JUNE 11, 2014.

Signed Ty Hawkins P.L.S. or R.C.E. No.: LS 7973



COUNTY SURVEYOR'S STATEMENT

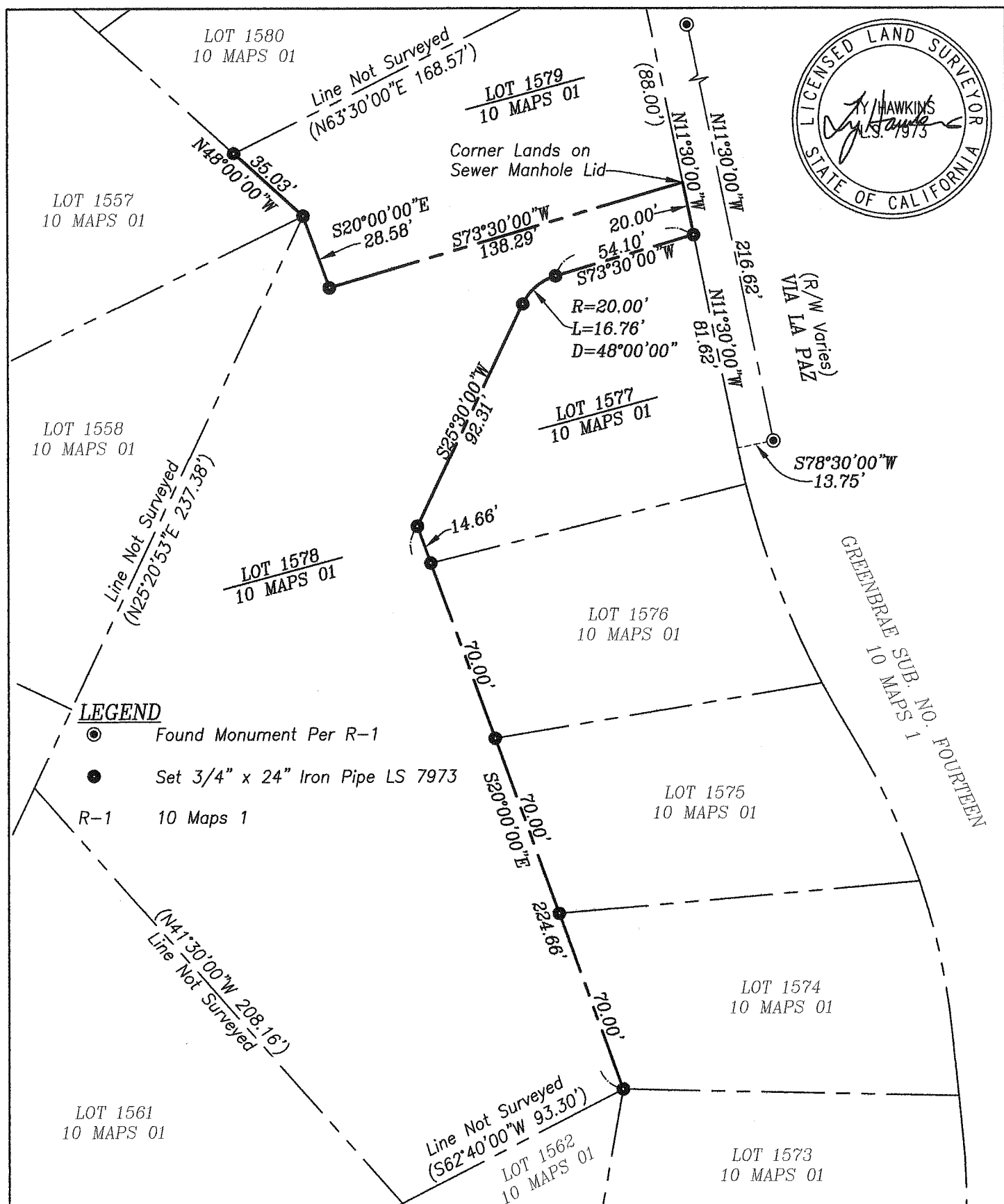
This Corner Record was received JUNE 17, 2014 and examined and filed JULY 3, 2014.

Signed Richard G. Simonitch P.L.S. or R.C.E. No.: 7821

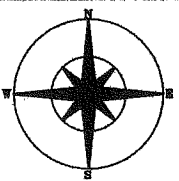
Title DEPUTY

County Surveyor's Comment _____





Ty Hawkins LS 7973
 3636 Oak Canyon Ln.
 Vacaville CA. 95688
 Ph. 707-974-9890
 Fx. 707-447-7171



Corner Record Plat
 A Portion of Lots 1577, 1578, & 1579
 Map of Greenbrae Subdivision
 No. Fourteen
 10 Maps 1
 Larkspur, Marin County California

Date: 06/11/14	Scale: 1"=50'
Job #: 14047	
	Sheet 2
	of 2
	2