

CORNER RECORD

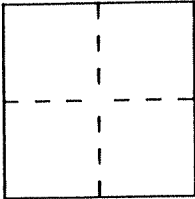
Document Number 70-313-36

City of GREENBRAE

County of MARIN, California

Brief Legal Description AP # 70-313-36

Lot 1517 of 10-RM-01



CORNER TYPE

Government Corner Control
 Meander Property
 Rancho Other
 Date of Survey 2-25-1993

COORDINATES (Optional)

N. _____
 E. _____
 Zone _____ Datum _____
 Elev. _____

Corner — Left as found Found and tagged Established Reestablished Rebuilt

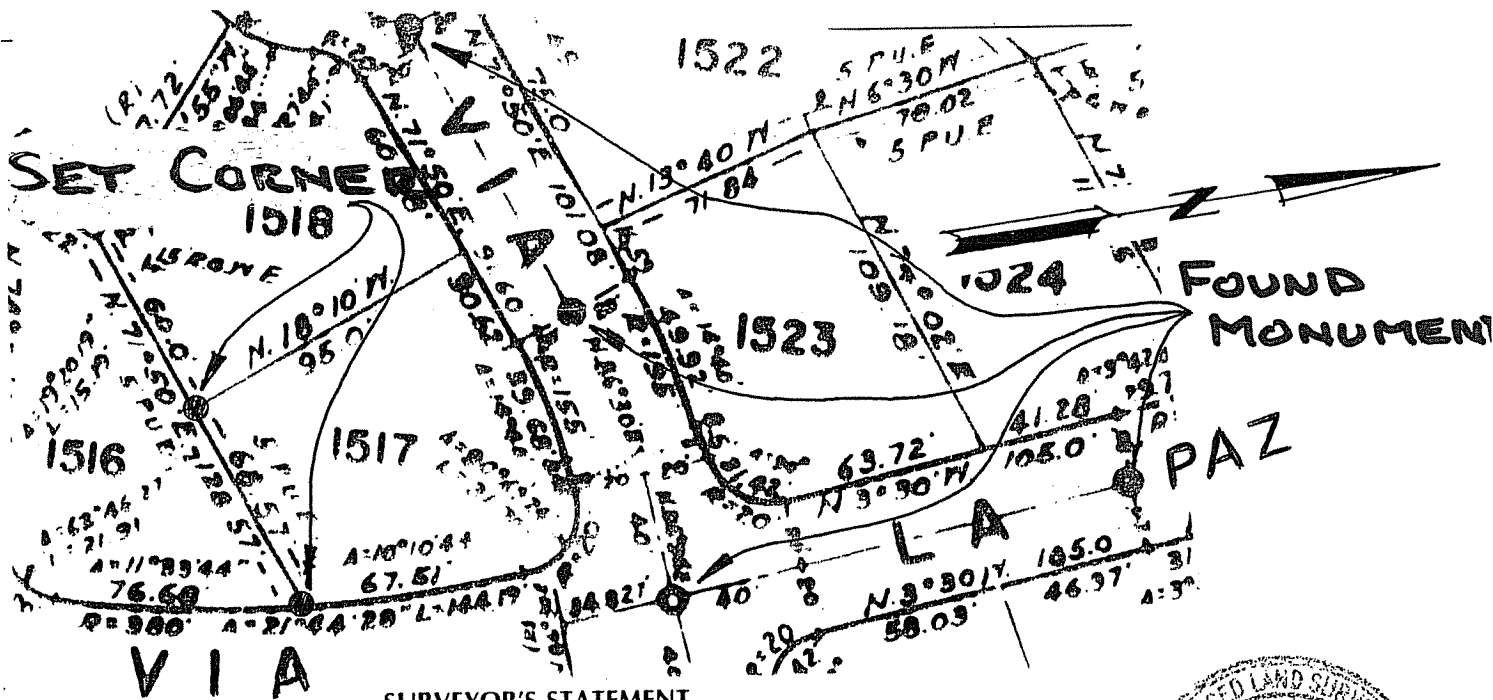
Identification and type of corner found: Evidence used to identify or procedure used to establish or reestablish the corner:

1. FOUND 4 (FOUR) STANDARD CITY MONUMENTS
SHOWN ON MAP OF GREENBRAE SUBDIVISION 14,
BOOK 10, PAGE: 1

GREENBRAE

A description of the physical condition of the monument as found and as set or reset:

1. ● SET 1/2" REBAR WITH PLASTIC CUP
EMBOSSSED L.S. 5290

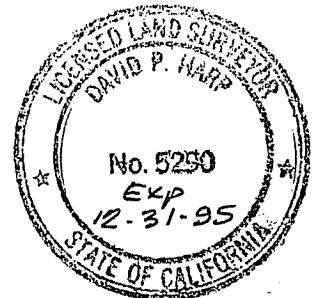


SURVEYOR'S STATEMENT

This Corner Record was prepared by me or under my direction in conformance with

the Land Surveyors' Act on Feb 25 1993.

Signed David Harp L.S. or R.C.E. Number LS 5290



COUNTY SURVEYOR'S STATEMENT

This Corner Record was received

3-4

and filed

3-5

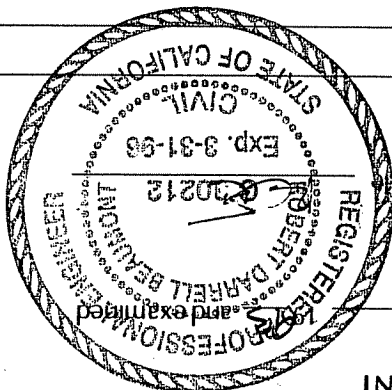
1995

Signed

[Handwritten Signature]

Title

County Surveyor's Comment



[Faint handwritten text]

[Faint handwritten text]