

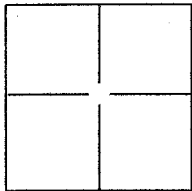
# CORNER RECORD

Document Number APN # 070-313-30

City of LARKSPUR

County of MARIN, California

Brief Legal Description LOT 1523 AS SHOWN ON THE MAP OF GREENBRAE SUBDIVISION NO. FOURTEEN  
10 MAPS 1



### CORNER TYPE

Government Corner  Control   
Meander  Property   
Rancho  Other

Date of Survey 02/05/14

### COORDINATES(Optional)

N. \_\_\_\_\_  
E. \_\_\_\_\_  
Zone \_\_\_\_\_ NAD27  NAD83   
NAD83 Epoch \_\_\_\_\_  
Elev. \_\_\_\_\_  
Vert. Datum: NGVD29  NADV88   
Meas. Units: Metric  Imperial

Corner - Left as found  Found and tagged  Established  Reestablished  Rebuilt

Identification and type of corner found: Evidence used to identify or procedure used to establish or reestablish the corner:

FOUND CENTERLINE MONUMENTS AS SHOWN ON 10 MAPS 1. SEE REVERSE

A description of the physical condition of the monument as found and as set or reset: \_\_\_\_\_

SET 3/4" X 24" IRON PIPE AND CAP LS 7973 UNLESS NOTED OTHERWISE, SEE REVERSE.

### SURVEYOR'S STATEMENT

This Corner Record was prepared by me or under my direction in conformance with  
the Land Surveyor's Act on FEBRUARY 8, 2014.

Signed Ty Hawkins P.L.S. or R.C.E. No.: LS 7973



### COUNTY SURVEYOR'S STATEMENT

This Corner Record was received MAR. 12, 2014 and examined  
and filed MARCH 31, 2014.

Signed Richard G. Simonitch P.L.S. or R.C.E. No.: 7821



Title DEPUTY

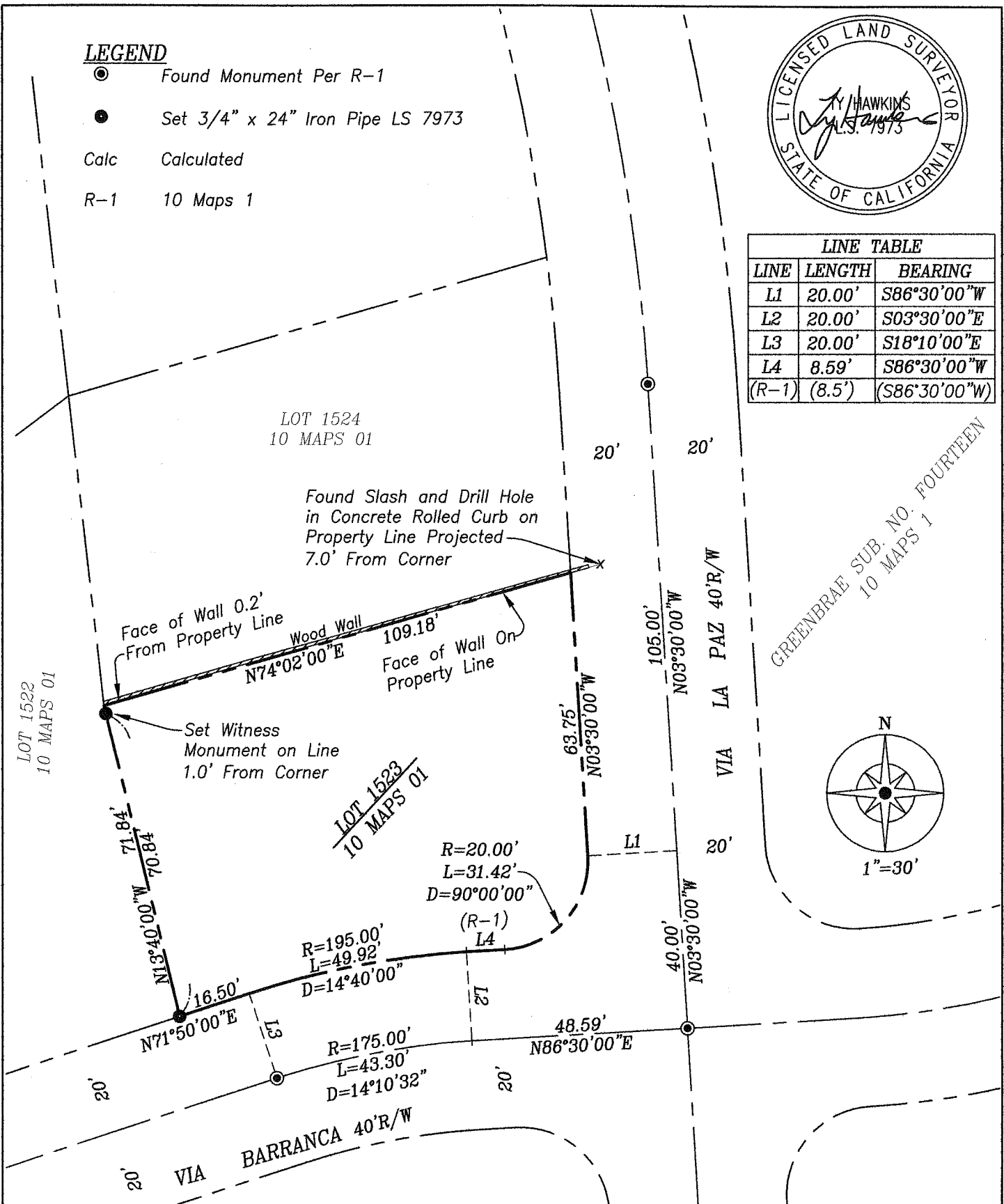
County Surveyor's Comment \_\_\_\_\_

**LEGEND**

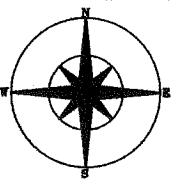
- Found Monument Per R-1
- Set 3/4" x 24" Iron Pipe LS 7973
- Calc Calculated
- R-1 10 Maps 1



LINE TABLE		
LINE	LENGTH	BEARING
L1	20.00'	S86°30'00"W
L2	20.00'	S03°30'00"E
L3	20.00'	S18°10'00"E
L4	8.59'	S86°30'00"W
(R-1)	(8.5')	(S86°30'00"W)



Ty Hawkins LS 7973  
3636 Oak Canyon Ln.  
Vacaville CA. 95688  
Ph. 707-974-9890  
Fx. 707-447-7171



Corner Record Plat  
Lot 1523  
Map of Greenbrae Subdivision  
No. Fourteen  
10 Maps 1  
Larkspur, Marin County California

Date: 02/08/14	Scale: 1"=30'
Job #: 14008	
	Sheet 2
	of 2