

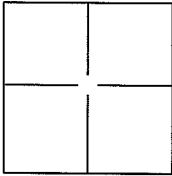
CORNER RECORD

Document Number APN # 070-313-08

City of Greenbrae

County of Marin, California

Brief Legal Description Southerly line of lot 1546 10 maps 14



CORNER TYPE

Government Corner Control
 Meander Property
 Rancho Other

Date of Survey September 2014

COORDINATES(Optional)

N. _____
 E. _____
 Zone _____ NAD27 NAD83
 NAD83 Epoch _____
 Elev. _____
 Vert. Datum: NGVD29 NADV88
 Meas. Units: Metric Imperial

Corner - Left as found Found and tagged Established Reestablished Rebuilt

Identification and type of corner found: Evidence used to identify or procedure used to establish or reestablish the corner:

Held record bearing & distance of found centerline monuments in La Cuesta Drive per 8 m 68*

*Exhibit sheet 2

A description of the physical condition of the monument as found and as set or reset:

Set 5/8" rebar & caps and nail & shiners stamped PLS 6784 on southerly line of lot 1546 of 10 M 14*

*Exhibit sheet 2

SURVEYOR'S STATEMENT

This Corner Record was prepared by me or under my direction in conformance with the Land Surveyor's Act on 10/2, 2014.

Signed [Signature] P.L.S. or R.C.E. No.: 6784



COUNTY SURVEYOR'S STATEMENT

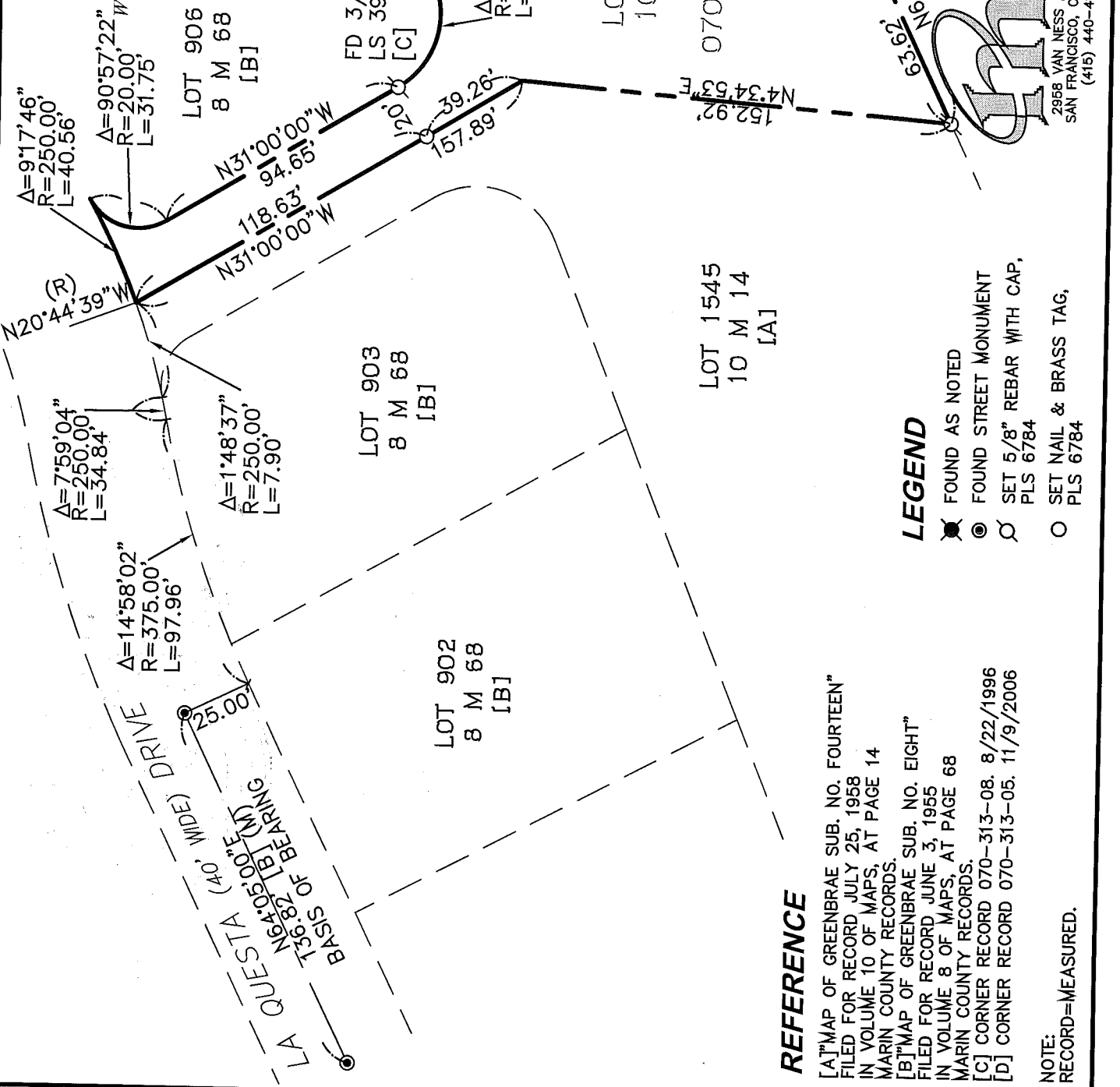
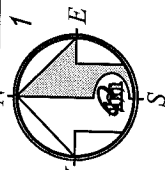
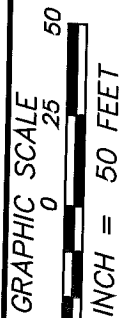
This Corner Record was received 10/06, 2014 and examined and filed OCTOBER 31, 2014.

Signed [Signature] P.L.S. or R.C.E. No.: 7821

Title DEPUTY

County Surveyor's Comment _____





REFERENCE

[A] MAP OF GREENBRAE SUB. NO. FOURTEEN" FILED FOR RECORD JULY 25, 1958 IN VOLUME 10 OF MAPS, AT PAGE 14 MARIN COUNTY RECORDS.
 [B] MAP OF GREENBRAE SUB. NO. EIGHT" FILED FOR RECORD JUNE 3, 1955 IN VOLUME 8 OF MAPS, AT PAGE 68 MARIN COUNTY RECORDS.
 [C] CORNER RECORD 070-313-08, 8/22/1996
 [D] CORNER RECORD 070-313-05, 11/9/2006

NOTE:
 RECORD=MEASURED.

LEGEND

- ⊗ FOUND AS NOTED
- ⊙ FOUND STREET MONUMENT
- ⊘ SET 5/8" REBAR WITH CAP, PLS 6784
- SET NAIL & BRASS TAG, PLS 6784

CORNER RECORD

MERIDIAN ENGINEERING, INC.
 2968 VAN NESS AVENUE (14197)
 SAN FRANCISCO, CA 94109
 (415) 440-4131
 surveyrequest@meridiansurvey.com
 777 GRAND AVENUE, #202
 SAN RAFAEL, CA 94901
 (415) 466-6450