

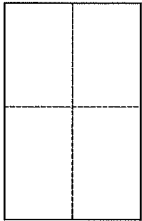
**CORNER RECORD**

Document Number APN 070-303-09

City of Greenbrae

County of Marin, California

Brief Legal Description Lot 1242 Greenbrae Subd. No. 11 9 R.M. 80



**CORNER TYPE**

Government Corner  Control   
Meaneder  Property   
Rancho  Other   
Date of Survey 9/27/13

**COORDINATES (Optional)**

N. \_\_\_\_\_  
E. \_\_\_\_\_  
Zone            NAD27  NAD83   
NAD83 Epoch \_\_\_\_\_  
Elev. \_\_\_\_\_  
Vert. Datum: NGVD29  NAVD88   
Meas. Units: Metric  Imperial

Corner – Left as found  Found and tagged  Established  Reestablished  Rebuilt

Identification and type of corner found: Evidence used to identify or procedure used to establish or reestablish the corner:

Found centerline monuments in Via Barranca per 9 R.M. 80 to re-establish the south lot line of Lot 1242 (see map reverse side)

A description of the physical condition of the monument as found and as set or reset: \_\_\_\_\_

Set 1/2" i.p. LS7237 at southerly most corner Lot 1242 and 2 points on #3 rebar tagged LS7237 (see map reverse side)

**SURVEYOR'S STATEMENT**

This Corner Record was prepared by me or under my direction in conformance with the Land Surveyor's Act on 10/4/2013  
Signed Michael E. Ford P.L.S. or R.C.E. No. 7237



**COUNTY SURVEYOR'S STATEMENT**

This Corner Record was received OCTOBER 10, 2013  
and examined and filed DECEMBER 3<sup>RD</sup> 2013  
Signed Richard G. Simonitch P.L.S. or R.C.E. No. 7821  
Title DEPUTY CO. SURV.

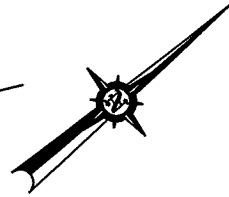


County Surveyor's Comment

\_\_\_\_\_  
\_\_\_\_\_  
\_\_\_\_\_

N18°00'E 13.75'

LOT 1237  
LOT 1238



**BASIS OF BEARINGS**

CALCULATED BEARING AND DISTANCE  
BETWEEN FOUND CENTERLINE MONUMENTS  
IN VIA BARRANCA PER 9 RM 80

**LEGEND**

- SET 1/2" I.P. LS7237
- ⊗ SET 1/2" REBAR LS7237
- ⊙ FOUND CENTERLINE MON PER 9 RM 80

NOTE: ALL BEARINGS AND DISTANCES ARE  
RECORD AND MEASURED PER 9 RM 80,  
UNLESS NOTED

VIA BARRANCA

BASIS OF BEARINGS  
N 39°21'36" W 348.88  
(N 39°21'36" W 348.91) C, 9 RM 80

LOT 1241

GREENBRAE SUBD. NO. 11

9 RM 80

N34°00'01"E (RADIAL)  
N27°20'E 13.75'  
D=6'40'  
R=170'  
L=19.78'

LOT 1242

APN 070-303-09

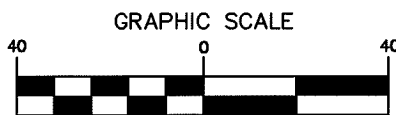
VIA BARRANCA

BRASS TAG & NAIL PLS 7244 IN  
FENCE RUNNER N48°18'26"W 0.15'  
NO RECORD

68.70' 43.04' 33.90'  
N40°22'09"E 145.64'

LOT 1243

CL. MON. 9 RM 80 SFNF



( IN FEET )  
1 inch = 40 ft.



2300 bethards drive, suite J  
santa rosa, california 95405  
p 707.542.8513 - f 707.542.1825  
www.michaelfordinc.com