

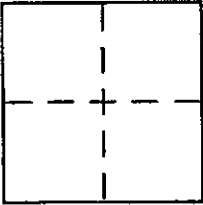
CORNER RECORD

Document Number APN 020-291-15

City of LARKSPOR

County of MARIN, California

Brief Legal Description LOT 1417 OF 9 MAPS/89, ORMC



CORNER TYPE

Government Corner Control
Meander Property
Rancho Other
Date of Survey 9-25-02

COORDINATES (Optional)

N. _____
E. _____
Zone _____ NAD27 NAD83
NAD83 Epoch _____
Elev. _____
Vert. Datum: NGVD29 NAVD88
Meas. Units: Metric Imperial

Corner - Left as found Found and tagged Established Reestablished Rebuilt

Identification and type of corner found: Evidence used to identify or procedure used to establish or reestablish the corner:

SEE SHEET 2

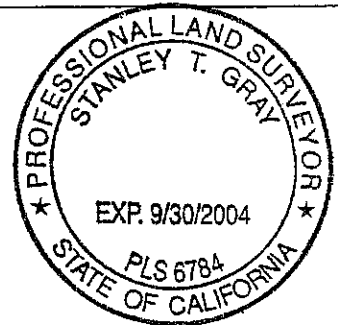
A description of the physical condition of the monument as found and as set or reset:

SEE SHEET 2

SURVEYOR'S STATEMENT

This Corner Record was prepared by me or under my direction in conformance with the Land Surveyor's Act on SEPTEMBER 26 2002

Signed [Signature] P.L.S. or R.C.E. No. 6784



COUNTY SURVEYOR'S STATEMENT

This Corner Record was received OCTOBER 7, 2002

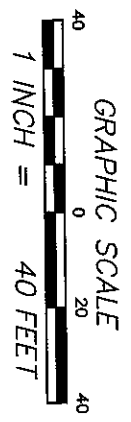
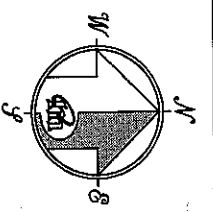
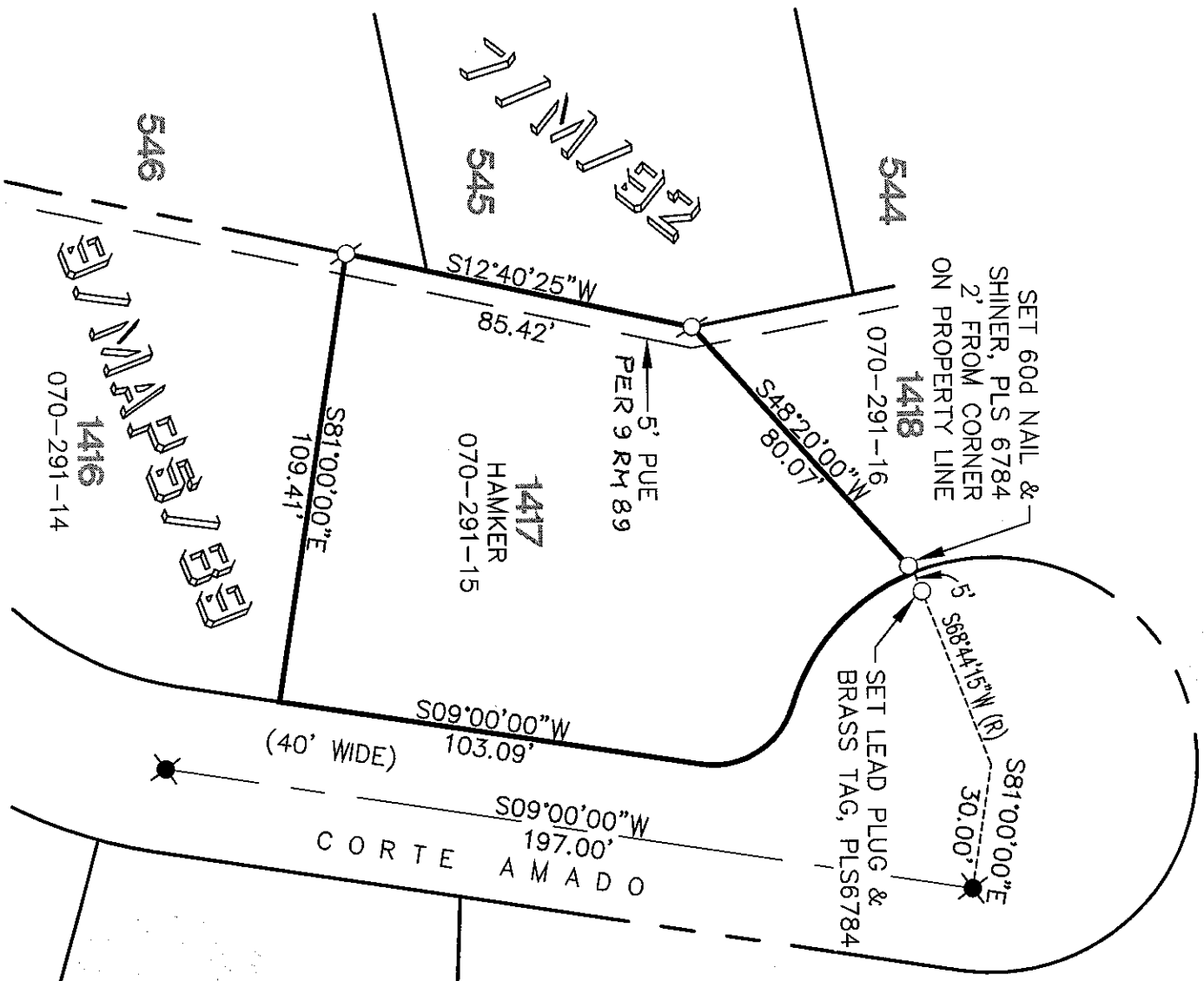
and examined and filed OCTOBER 14, 2002

Signed [Signature] P.L.S. or R.C.E. No. 7128

Title DEPUTY

County Surveyor's Comment _____





REFERENCE

"MAP OF GREENBRAE SUB NO. THIRTEEN...CALIFORNIA" FILED FOR RECORD 17 OCTOBER 1957 IN BOOK 9 OF MAPS, AT PAGE 89, OFFICIAL RECORDS OF MARIN COUNTY.

LEGEND

- ✖ FOUND STANDARD STREET MONUMENT
- SET AS NOTED
- ⊗ SET 5/8" REBAR WITH CAP, PLS 6784
- ⊘ PUE PUBLIC UTILITY EASEMENT

NOTE
RECORD=MEASURED

CORNER RECORD



1812 UNION STREET
SAN FRANCISCO, CA 94123
(415) 440-4131
info@meridiansurvey.com

100 DRAKES LANDING RD, #164
GREENBRAE, CA 94123
(415) 461-1241