

CORNER RECORD

Agency Index

CR22-148

Document Number

070-273-22

City of Larkspur

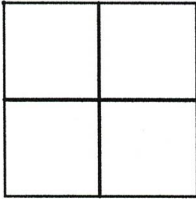
County of

MARIN

, California

Brief Legal Description

Lot 1128, 9 RM 60, Greenbrae Subdivision No. 10, Marin County Records



CORNER TYPE

Government Corner Control
Meander Property
Rancho Other

Date of Survey 11/10/2022

COORDINATES (Optional)

N. _____ E. _____
Elevation _____
Units Metric U.S. Survey Foot
Horizontal Datum _____
Zone _____ Epoch Date _____
Vertical Datum _____

Complies with Public Resources Code §§8801-8819
 Complies with Public Resources Code §§8890-8902

PLS Act Ref: 8765(d) 8771 8773 Other:

Corner/Monument: Left as found Established Rebuilt Pre-Construction
 Found and tagged Reestablished Referenced Post-Construction

Narrative of corner identified and monument as found, set, reset, replaced, or removed:

See sheet #2 for description (s):

SURVEYOR'S STATEMENT

This Corner Record was prepared by me or under my direction in conformance with the Professional Land Surveyors' Act on December 2, 2022

Signed [Signature] P.L.S. or R.C.E. No. 6649



COUNTY SURVEYOR'S STATEMENT

This Corner Record was received December 05, 2022

and examined and filed December 06, 2022

Signed T.W. Park P.L.S. [Redacted] No. 8176

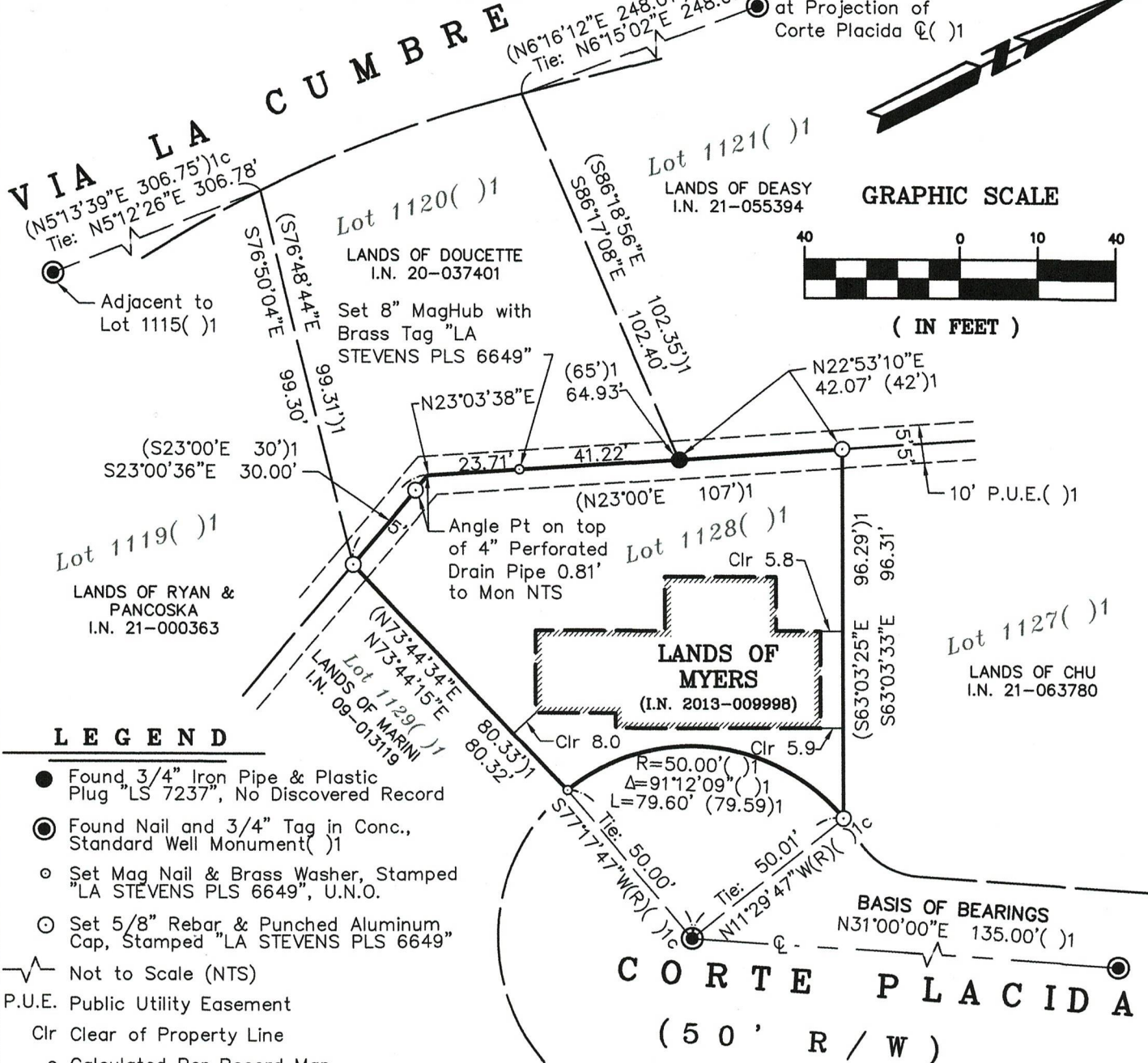
Title County Surveyor



County Surveyor's Comment _____

All distances shown are in feet and decimals thereof

In Via La Cumbre at Projection of Corte Placida ()



LEGEND

- Found 3/4" Iron Pipe & Plastic Plug "LS 7237", No Discovered Record
- ⊙ Found Nail and 3/4" Tag in Conc., Standard Well Monument ()
- Set Mag Nail & Brass Washer, Stamped "LA STEVENS PLS 6649", U.N.O.
- ⊙ Set 5/8" Rebar & Punched Aluminum, Cap, Stamped "LA STEVENS PLS 6649"
- ⚡ Not to Scale (NTS)
- P.U.E. Public Utility Easement
- Clr Clear of Property Line
- c Calculated Per Record Map
- U.N.O. Unless Noted Otherwise
- (R) Radial Bearing
- () 19 RM 60



12-2-22

**CORNER RECORD
LANDS OF MYERS**

(LOT 1128, 9 MAPS 60)

LARKSPUR MARIN COUNTY CALIFORNIA
SCALE: 1" = 40' DECEMBER 2, 2022

L.A. Stevens & Associates, Inc.

Professional Land Surveyors * (415) 382-7713
7 Commercial Blvd., Suite 1 * Novato, CA 94949

Job # 222255

Lawrence A. Stevens, PLS 6649

Copyright © Lawrence A. Stevens 2022