

CORNER RECORD

Document Number 70-273-19

City of Greenbrae County of Marin, California

Brief Legal Description Lot 1131, MAP of Greenbrae, SUB. 10, 9 RM 60
APN: 70-273-19



CORNER TYPE

Government Corner Control
Meander Property
Rancho Other
Date of Survey Feb. 17, 1994

COORDINATES (Optional)

N. _____
E. _____
Zone _____ Datum _____
Elev. _____

Corner — Left as found Found and tagged Established Reestablished Rebuilt

Identification and type of corner found: Evidence used to identify or procedure used to establish or reestablish the corner:
Reestablish the ANGLE Point in the Westerly Line of
Lot 1131 of Map of Greenbrae SUB. 10, 9 RM 60, from existing
street monuments on Corte Placida & as said monuments
are shown & depicted upon said Record Map

A description of the physical condition of the monument as found and as set or reset:
set 1/2" rebar with LS Cap 5379 affixed to top

SURVEYOR'S STATEMENT

This Corner Record was prepared by me or under my direction in conformance with the Land Surveyors' Act on February 22nd 1994.

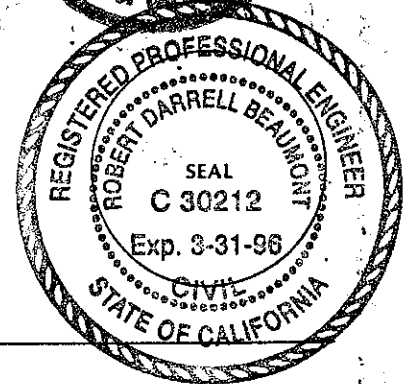
Signed Darrell J. Beaumont L.S. or R.C.E. Number PLS NO. 5379
renewal G. 30.900



COUNTY SURVEYOR'S STATEMENT

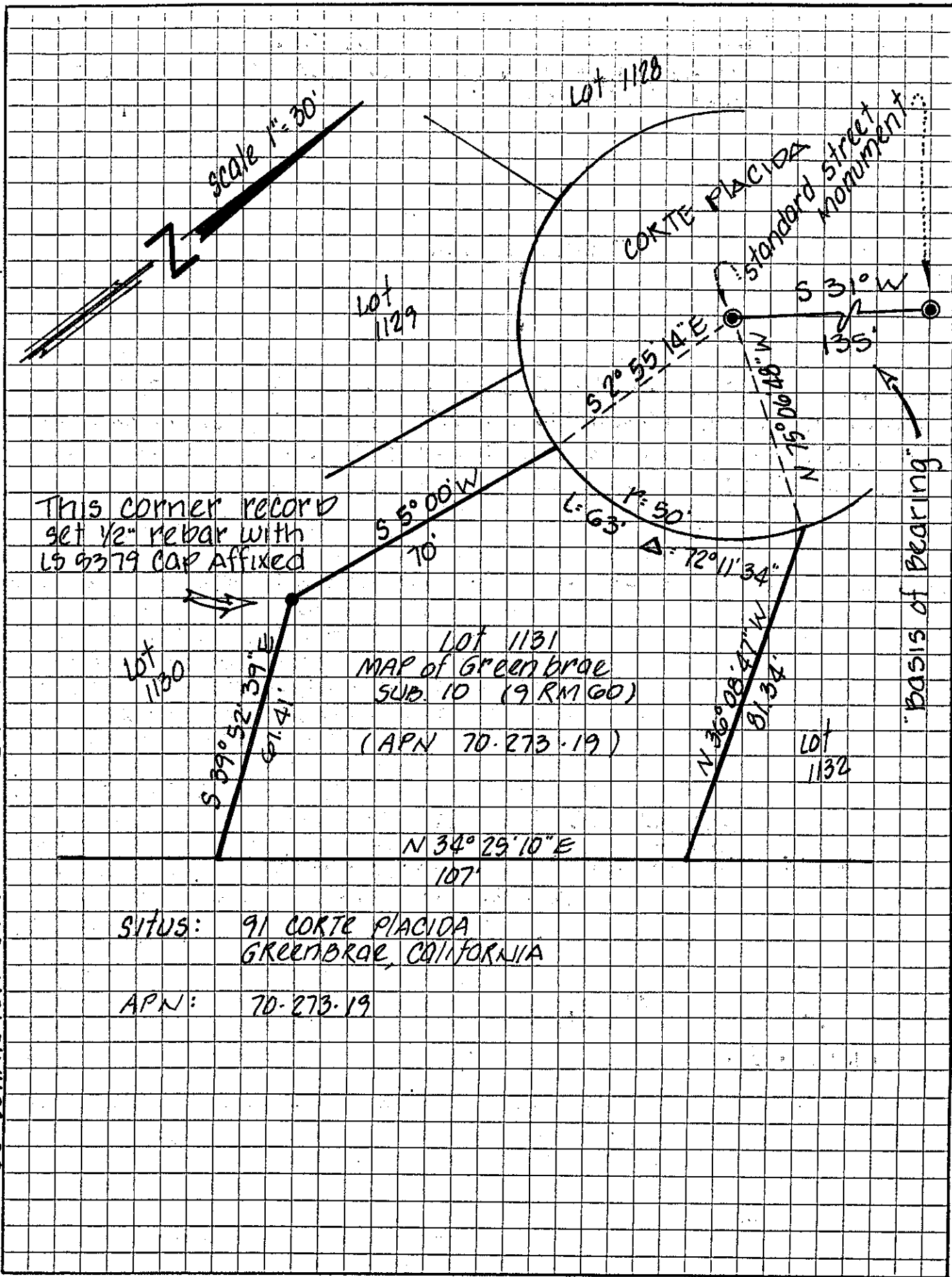
This Corner Record was received February 28 1994 and examined and filed 2-28 1994.

Signed [Signature] Title PLS



County Surveyor's Comment _____

DJ SCRANTON SURVEYING 845 OLIVE AVE. SUITE 208 NOVATO, CA 94945



SITUS: 91 CORTEZ PLACIDA
GREENBRAE, CALIFORNIA

APN: 70-273-19