

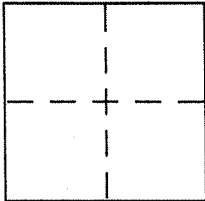
CORNER RECORD

VICINITY City of GREEN BRAE

Document Number APN 070-262-15

County of MARIN, California

Brief Legal Description LOT 909 PER 8 R.M. 68



CORNER TYPE

Government Corner Control
Meander Property
Rancho Other
Date of Survey 6-18-09

COORDINATES (Optional)

N. _____
E. _____
Zone _____ NAD27 NAD83
NAD83 Epoch _____
Elev. _____
Vert. Datum: NGVD29 NAVD88
Meas. Units: Metric Imperial

Corner - Left as found Found and tagged Established Reestablished Rebuilt

Identification and type of corner found: Evidence used to identify or procedure used to establish or reestablish the corner:

= SEE OVER =

A description of the physical condition of the monument as found and as set or reset:

= SEE OVER =

SURVEYOR'S STATEMENT

This Corner Record was prepared by me or under my direction in conformance with

the Land Surveyor's Act on JUNE 23 2009

Signed David Contreras (P.L.S. or R.C.E. No. 5065)



COUNTY SURVEYOR'S STATEMENT

This Corner Record was received JUNE 26, 2009

and examined and filed AUGUST 3, 2009

Signed _____ P.L.S. or R.C.E. No. 7128

Title COUNTY SURVEYOR

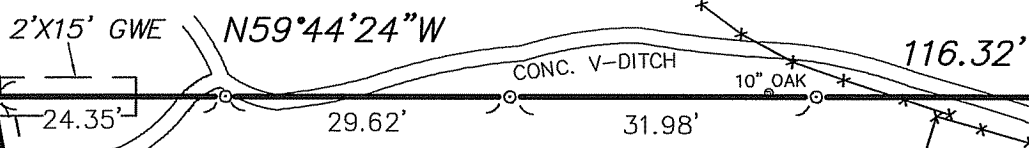
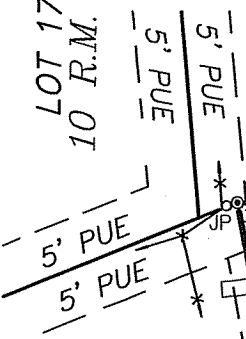
County Surveyor's Comment _____



LOT 1553
10 R.M. 1
A.P.N. 070-321-01

CORTE ALEJO
(40' RIGHT-OFWAY)

LOT 1737
10 R.M. 106

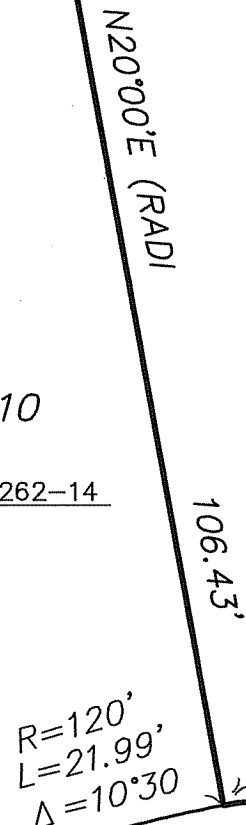


NOTES
1) ONLY EASEMENTS PER 8 RM 68 & 10 RM 1 ARE SHOWN

LOT 909
8 R.M. 68
A.P.N. 070-262-15

LA CUESTA DRIVE
(RIGHT-OFWAY VARIES)

LOT 910
A.P.N. 070-262-14



R=120'
L=21.99'
Δ=10°30'

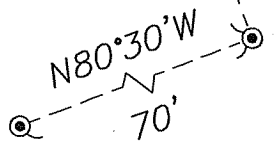
R=120'
L=49.35'
Δ=23°33'45"

R=30'
L=48.32'
Δ=92°17'17"

R=170'
L=39.68'
Δ=13°22'18"

R=30'
Δ=29°18'46"
L=15.35'

CORTE LOYOLA
(40' RIGHT-OFWAY)



- LEGEND**
- GWE = GUY WIRE EASEMENT
 - JP = JOINT UTILITY POLE
 - PUE = PUBLIC UTILITY EASEMENT
 - *—* = FENCE
 - ⊙ = FOUND STANDARD STREET MONUMENT
 - ⊙ = SET REBAR & PLASTIC CAP, LS 5065

