

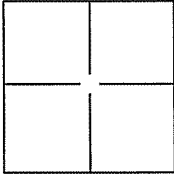
CORNER RECORD

Document Number A.P.N. 070-262-01

City of Greenbrae

County of Marin, California

Brief Legal Description Lot 921, 38 Paseo Way, 8 RM 68.



CORNER TYPE

Government Corner Control
Meander Property
Rancho Other

Date of Survey 11 May 2006

COORDINATES(Optional)

N. _____
E. _____
Zone _____ NAD27 NAD83
NAD83 Epoch _____
Elev. _____
Vert. Datum: NGVD29 NADV88
Meas. Units: Metric Imperial

Corner - Left as found Found and tagged Established Reestablished Rebuilt

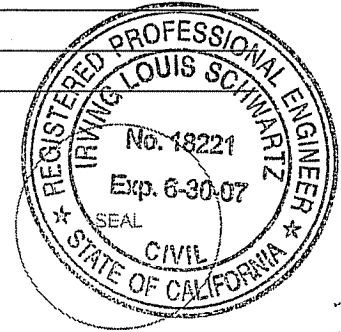
Identification and type of corner found: Evidence used to identify or procedure used to establish or reestablish the corner:
Found Rebar and Yellow Cap, P.L.S. 7053, and Found Standard Street Monuments (2)
along Paseo Way per 8 RM 68.

A description of the physical condition of the monument as found and as set or reset: _____
Set NE corner (1 corner) on Lot 921, See Exhibit "A".

SURVEYOR'S STATEMENT

This Corner Record was prepared by me or under my direction in conformance with the Land Surveyor's Act on MAY 15, 2006.

Signed *Joy Schumacher* P.L.S. or R.C.E. No.: 18221



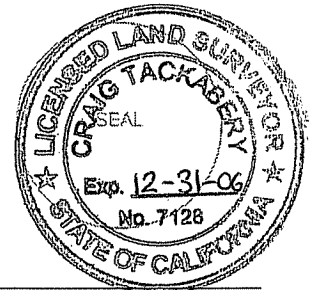
COUNTY SURVEYOR'S STATEMENT

This Corner Record was received MAY 22, 2006 and examined and filed JUNE 8, 2006.

Signed *[Signature]* P.L.S. or R.C.E. No.: 7128

Title COUNTY SURVEYOR

County Surveyor's Comment _____



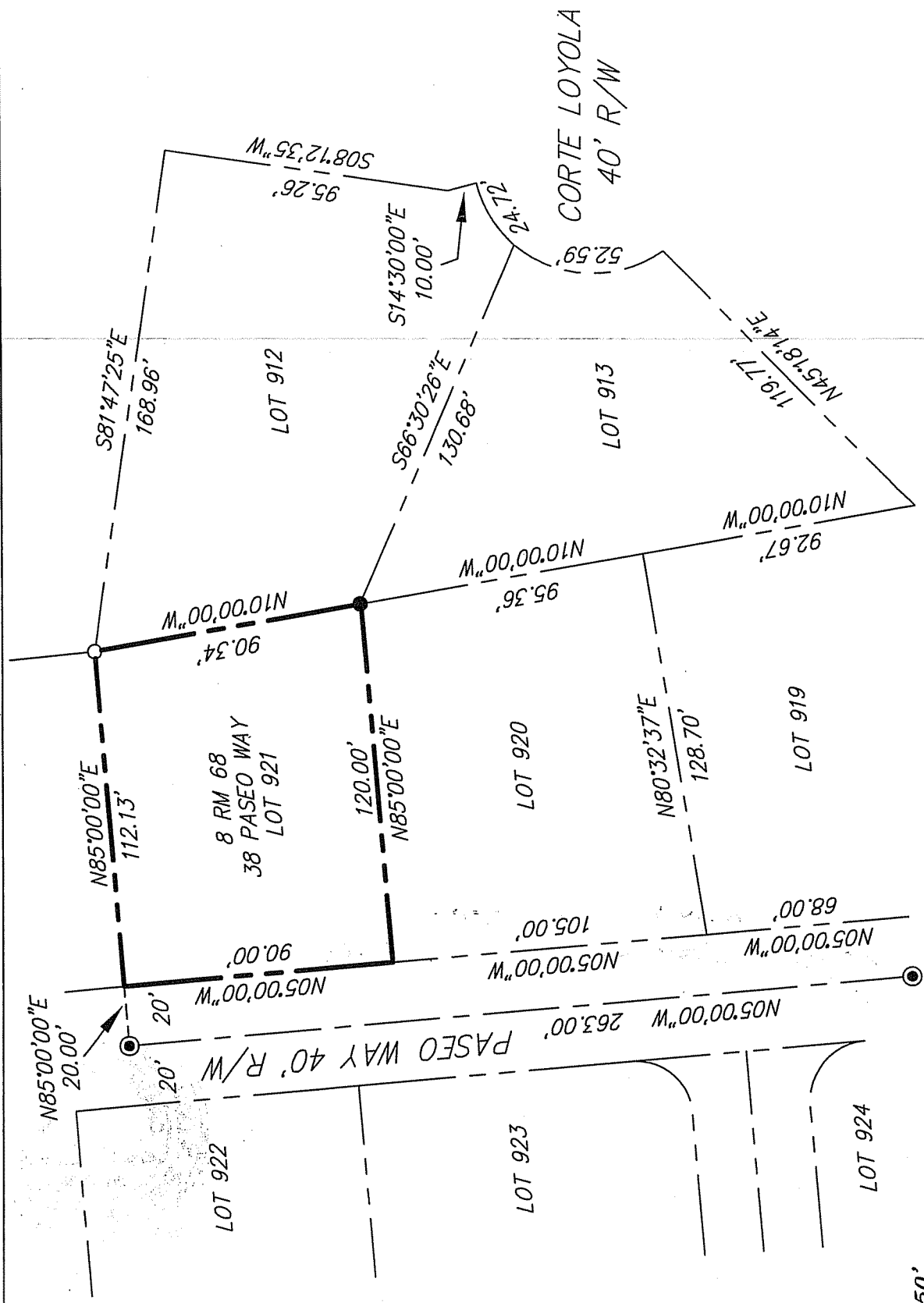


EXHIBIT "A"

ILS ASSOCIATES, INC.®
 CIVIL ENGINEERING AND LAND SURVEYING



79 GALLI DRIVE, SUITE A, NOVATO, CA 94949-5777 (415)863-2200 FAX (415)863-2783

NOTE:
 ALL DIMENSIONS AND BEARINGS
 SHOWN HEREON ARE PER 8 RM 68.

LEGEND

- SET IRON PIPE & YELLOW CAP "R.C.E. 18221"
- FOUND REBAR AND YELLOW CAP PLS 7055
- ⊙ FOUND STANDARD STREET MONUMENT

SCALE: 1" = 50'

