

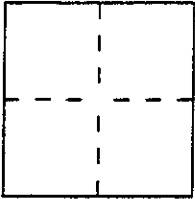
CORNER RECORD

Document Number AP No 70-253-06

City of GREENBRAE

County of MARIN, California

Brief Legal Description LOT 935 8 PM 6B



CORNER TYPE

Government Corner Control
Meander Property
Rancho Other
Date of Survey 5/9/97

COORDINATES
(Optional)

N. _____
E. _____
Zone _____ Datum _____
Elev. _____

Corner — Left as found Found and tagged Established Reestablished Rebuilt

Identification and type of corner found: Evidence used to identify or procedure used to establish or reestablish the corner:

SET 2 REAR CORNERS AND LINE POINT MID-WAY OF LOT 935, 8 PM 6B, PER FOUND ORIGINAL STREET MONUMENTS AND RECORD DIMENSIONS. (SEE SKETCH SHEET 2)

A description of the physical condition of the monument as found and as set or reset:

SET CORNERS & LINE PT. ARE 1/2" REBAR W/ PLASTIC CAP STAMPED "LS 6135". FOUND ORIGINAL STREET MONUMENTS ARE NAIL & TAG (ILLEGIBLE) IN CONCRETE W/ STANDARD WELL MONUMENT CASING.

SURVEYOR'S STATEMENT

This Corner Record was prepared by me or under my direction in conformance with the Land Surveyors' Act on MAY 9 1997.

Signed Richard F. Alspaach L.S. or R.C.E. Number 6135



COUNTY SURVEYOR'S STATEMENT

This Corner Record was received MAY 15 1997 and examined and filed MAY 16 1997.

Signed John M. Wooley Title DEPUTY

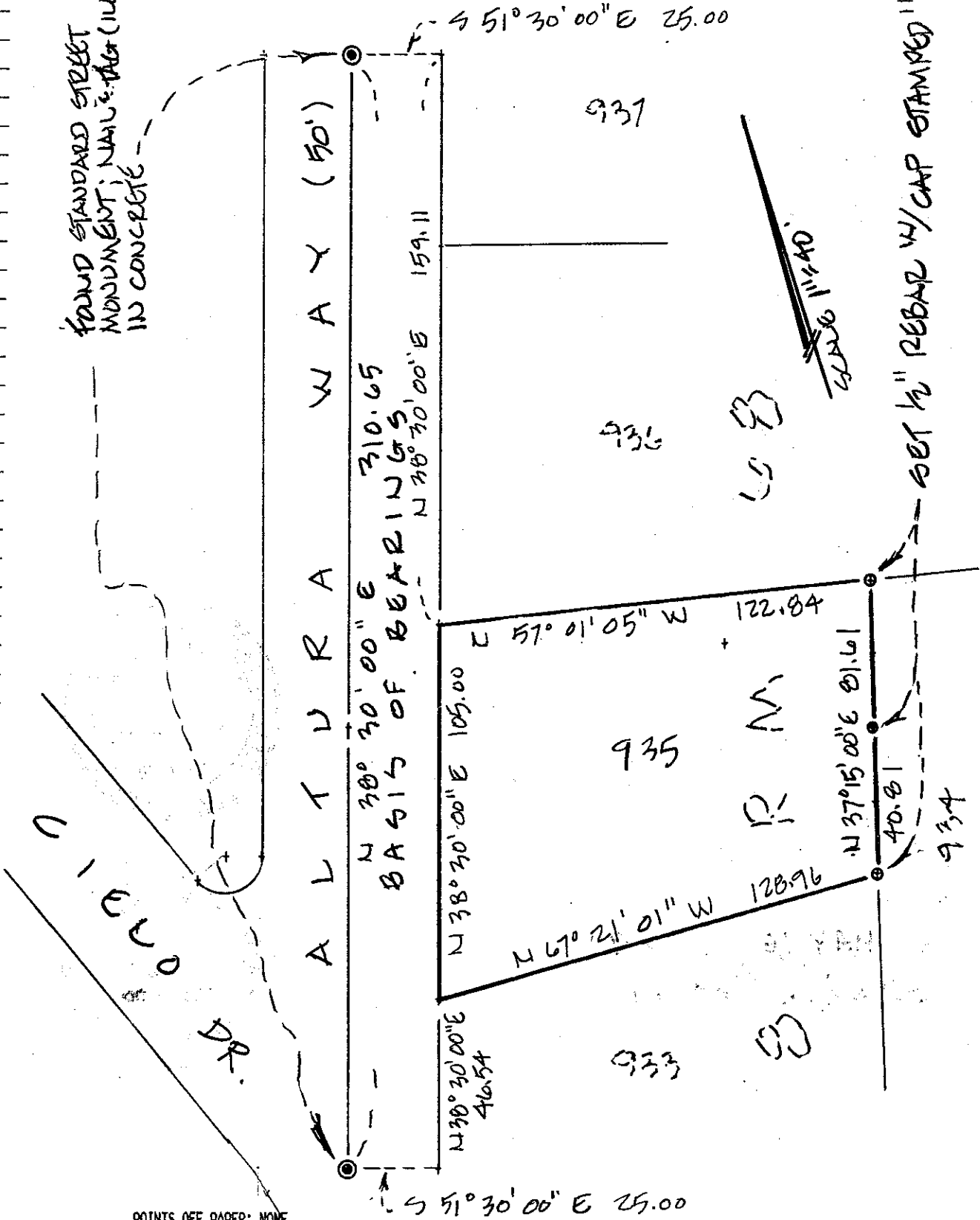


County Surveyor's Comment _____

CC-PLOT output, date: 05-09-1997, time: 3:30:40 PM, FILE: PARK278.CCC

PLOT SCALE: 1 inch = 40 feet
NORTH IS ROTATED -38.30 DEGREES CLOCKWISE.

FOUND STANDARD STREET
MONUMENT; NAIL & TAG (ILLEGIBLE)
IN CONCRETE



POINTS OFF PAPER: NONE