

CORNER RECORD

Agency Index

20-050

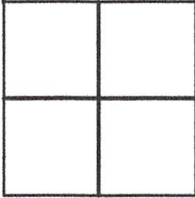
Document Number

070-241-35

City of Greenbrae

County of Marin, California

Brief Legal Description Lot 1036 per 8 RM 86, Marin County Records; I.N. 2014-006635



CORNER TYPE

Government Corner Control
Meander Property
Rancho Other

Date of Survey 7/6/2020

COORDINATES (Optional)

N. _____ E. _____

Elevation _____

Units Metric U.S. Survey Foot

Horizontal Datum _____

Zone _____ Epoch Date _____

Vertical Datum _____

Complies with Public Resources Code §§8801-8819

Complies with Public Resources Code §§8890-8902

PLS Act Ref: 8765(d)

8771

8773

Other:

Corner/Monument: Left as found

Established

Rebuilt

Pre-Construction

Found and tagged

Reestablished

Referenced

Post-Construction

Narrative of corner identified and monument as found, set, reset, replaced, or removed:

See sheet #2 for description (s):

SURVEYOR'S STATEMENT

This Corner Record was prepared by me or under my direction in conformance with the Professional Land Surveyors' Act on July 22, 2020

Signed [Signature] P.L.S. or R.C.E. No. 6649



COUNTY SURVEYOR'S STATEMENT

This Corner Record was received 08/03/2020

and examined and filed 12/04/2020

Signed [Signature] P.L.S. or R.C.E. No. 9292

Title DEPUTY C.S.



County Surveyor's Comment _____

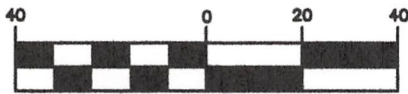
All distances shown are in feet and decimals thereof

LEGEND

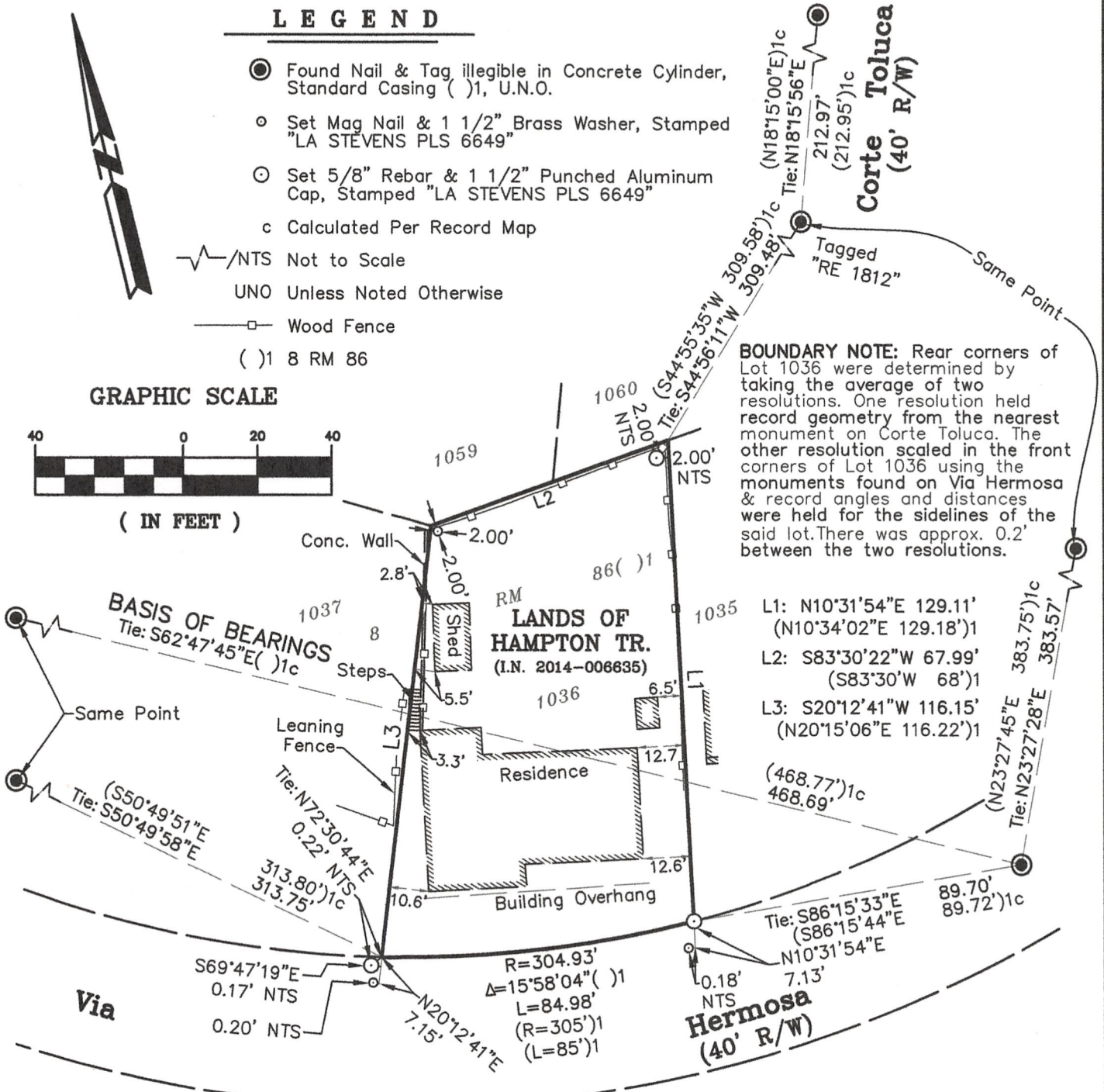
- Found Nail & Tag illegible in Concrete Cylinder, Standard Casing ()1, U.N.O.
- Set Mag Nail & 1 1/2" Brass Washer, Stamped "LA STEVENS PLS 6649"
- Set 5/8" Rebar & 1 1/2" Punched Aluminum Cap, Stamped "LA STEVENS PLS 6649"
- c Calculated Per Record Map

- ~ NTS Not to Scale
- UNO Unless Noted Otherwise
- Wood Fence
- ()1 8 RM 86

GRAPHIC SCALE



(IN FEET)



BOUNDARY NOTE: Rear corners of Lot 1036 were determined by taking the average of two resolutions. One resolution held record geometry from the nearest monument on Corte Toluca. The other resolution scaled in the front corners of Lot 1036 using the monuments found on Via Hermosa & record angles and distances were held for the sidelines of the said lot. There was approx. 0.2' between the two resolutions.



7-22-2020

Corner Record
LANDS OF
HAMPTON TR.
 (Lot 1036, 8 RM 86)

Greenbrae
 Scale: 1" = 40'

Marin County

California
 July, 2020

L.A. Stevens & Associates, Inc.

Professional Land Surveyors * (415) 382-7713
 7 Commercial Blvd., Suite 1 * Novato, CA 94949

Job # 202028

Lawrence A. Stevens, PLS 6649

Copyright © Lawrence A. Stevens 2020