

# CORNER RECORD

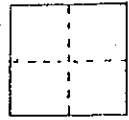
A.P. # 70-241-24

SHEET 1 OF 3

COUNTY OF MARIN T. \_\_\_\_\_ R. \_\_\_\_\_ MOUNT DIABLO MERIDIAN OR RANCHO \_\_\_\_\_ CALIFORNIA

CORNER TYPE: GOV'T. CORNER  MEANDER  RANCHO  CONTROL  OTHER

CORNER IDENTIFICATION-----DATE OF VISIT \_\_\_\_\_ 19 \_\_\_\_\_



CORNER LEFT AS FOUND  FOUND AND TAGGED  REESTABLISHED OBLITERATED CORNER  REBUILT  SET

PHYSICAL DESCRIPTION OF CORNER FOUND; EVIDENCE AND METHOD USED TO IDENTIFY OR REESTABLISH

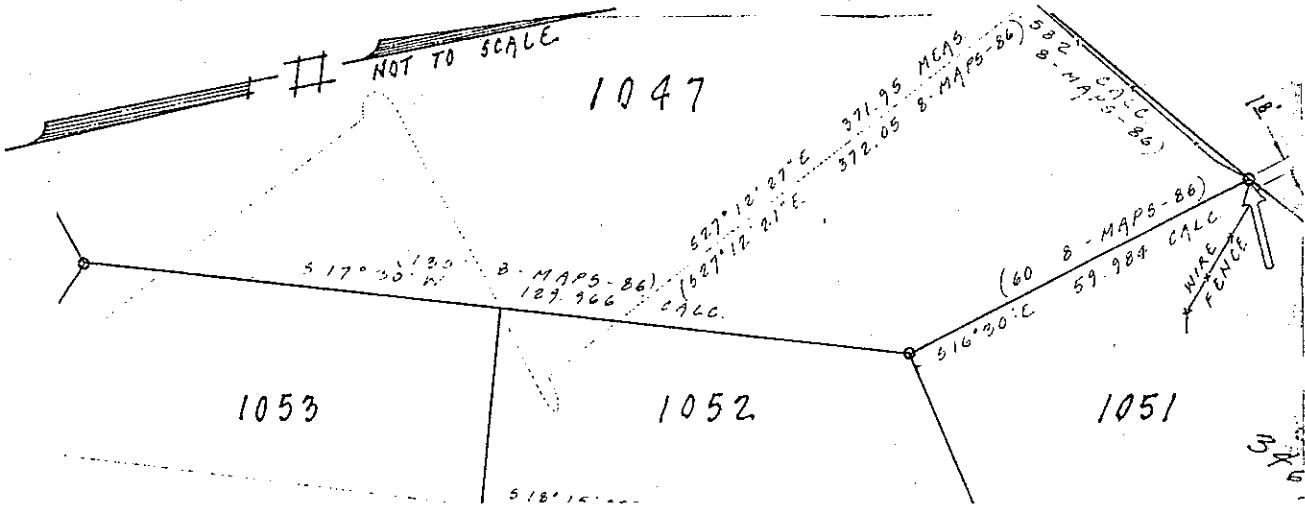
SET BRONZE NAIL & TAG "LS 4794" ATOP 2x4 FENCE RAIL AT THE MOST NORTHERLY CORNER OF LOT 1047; AS SHOWN ON "MAP OF GREENBRAE SUB NO NINE" RECORDED IN BOOK 8 OF MAPS AT PAGE 86; AND RECORD OF SURVEY RECORDED IN BOOK 27 OF SURVEYS AT PAGE 80; MARIN COUNTY RECORDS.  
ASSESSOR'S PARCEL NO 70-241-24 SURVEY NO 234

PHYSICAL DESCRIPTION OF MONUMENTS REBUILT, PERPETUATED OR SET

AS SHOWN.

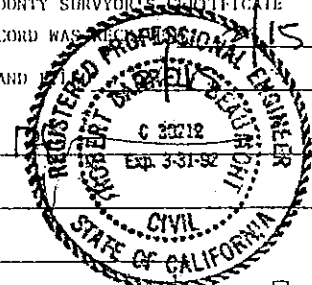
CALIFORNIA COORDINATE SYSTEM ORDER; FIRST  SECOND  THIRD   
STATIONS USED: NGS (USC & GS) STATE  COUNTY  OTHER  STATION \_\_\_\_\_ STATION \_\_\_\_\_  
ZONE \_\_\_\_\_ ELEVATION \_\_\_\_\_ NORTHINGS (Y) \_\_\_\_\_ EASTINGS (X) \_\_\_\_\_

SKETCH: (Include reference tie or witness points, remarks and topo of area)



**SURVEYOR'S CERTIFICATE**  
THIS CORNER RECORD WAS PREPARED BY ME OR UNDER MY DIRECTION IN CONFORMANCE WITH THE LAND SURVEYORS ACT ON FEBRUARY 19 91.  
SIGNED: \_\_\_\_\_  
L.S. or R.C.E. No. LS 4794 (RENEWED LAND SURVEYOR'S NO. 4794, EXPIRES 9-30-92)  
**STATE OF CALIFORNIA**

**COUNTY SURVEYOR'S CERTIFICATE**  
THE CORNER RECORD WAS \_\_\_\_\_ AND EXAMINED AND \_\_\_\_\_ 19 91.  
BY: \_\_\_\_\_  
TITLE: \_\_\_\_\_  
DOCUMENT No. \_\_\_\_\_  
STATEMENT ON BACK OF SHEET YES  NO



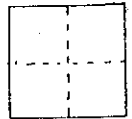
# CORNER RECORD

SHEET 2 OF 3

COUNTY OF MARIN T. \_\_\_\_\_ R. \_\_\_\_\_ MOUNT Diablo MERIDIAN OR RANCHO \_\_\_\_\_ CALIFORNIA

CORNER TYPE: GOV'T. CORNER  MEANDER  RANCHO  CONTROL  OTHER

CORNER IDENTIFICATION-----DATE OF VISIT \_\_\_\_\_ 19 \_\_\_\_\_



CORNER LEFT AS FOUND  FOUND AND TAGGED  REESTABLISHED OBLITERATED CORNER  REBUILT  SET

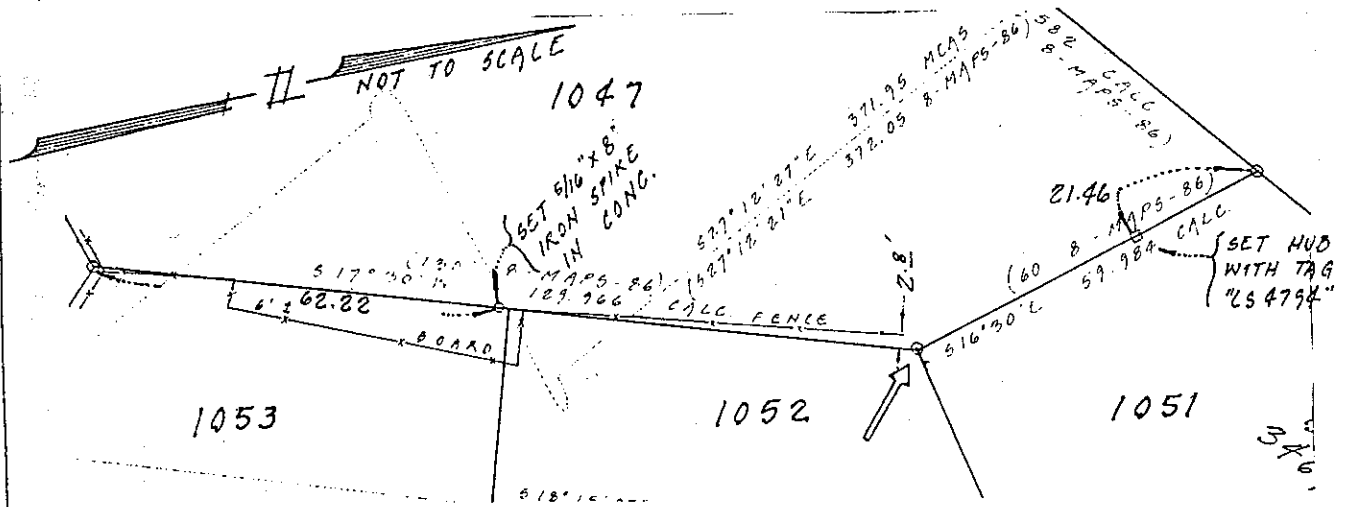
PHYSICAL DESCRIPTION OF CORNER FOUND; EVIDENCE AND METHOD USED TO IDENTIFY OR REESTABLISH  
 SET 3/4" I.D. IRON PIPE WITH PLASTIC PLUG "LS 4794" AT SW'LY BASE OF 6" BAY SNAG AT NE'LY ANGLE POINT OF LOT 1047; "MAP OF GREENBRAE SUB. NO. NINE"; RECORDED IN BOOK 8 OF MAPS AT PAGE 86; AND RECORD OF SURVEY RECORDED IN BOOK 27 OF SURVEYS AT PAGE 80; MARIN COUNTY RECORDS.  
 ASSESSOR'S PARCEL NO 70-241-24 SURVEY NO 234

PHYSICAL DESCRIPTION OF MONUMENTS REBUILT, PERPETUATED OR SET

AS SHOWN

CALIFORNIA COORDINATE SYSTEM ORDER; FIRST  SECOND  THIRD   
 STATIONS USED: NGS (USC & GS) STATE  COUNTY  OTHER  STATION \_\_\_\_\_ STATION \_\_\_\_\_  
 ZONE \_\_\_\_\_ ELEVATION \_\_\_\_\_ NORTHINGS (Y) \_\_\_\_\_ EASTINGS (X) \_\_\_\_\_

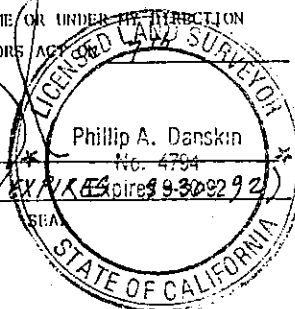
SEARCH: (Include reference tie or witness points, remarks and topo of area)



**SURVEYOR'S CERTIFICATE**

THIS CORNER RECORD WAS PREPARED BY ME OR UNDER MY SUPERVISION IN CONFORMANCE WITH THE LAND SURVEYORS ACT OF 1907  
 FEBRUARY 19 92

SIGNED: \_\_\_\_\_



I.S. or R.C.E. No. LS 4794

**COUNTY SURVEYOR'S CERTIFICATE**

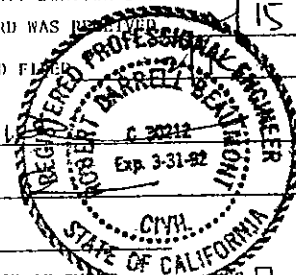
THE CORNER RECORD WAS RECEIVED AND EXAMINED AND FILED \_\_\_\_\_ 15 19 92

BY: \_\_\_\_\_

TITLE: \_\_\_\_\_

DOCUMENT No. \_\_\_\_\_

STATEMENT ON BACK OF SHEET YES  NO



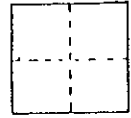
# CORNER RECORD

SHEET 3 OF 3

COUNTY OF MARIN T. \_\_\_\_\_ R. \_\_\_\_\_ MOUNT DIABLO MERIDIAN OR RANCHO \_\_\_\_\_ CALIFORNIA

CORNER TYPE: GOV'T. CORNER  MEANDER  RANCHO  CONTROL  OTHER

CORNER IDENTIFICATION-----DATE OF VISIT \_\_\_\_\_ 19\_\_



CORNER LEFT AS FOUND  FOUND AND TAGGED  REESTABLISHED OBLITERATED CORNER  REBUILT  SET

PHYSICAL DESCRIPTION OF CORNER FOUND; EVIDENCE AND METHOD USED TO IDENTIFY OR REESTABLISH

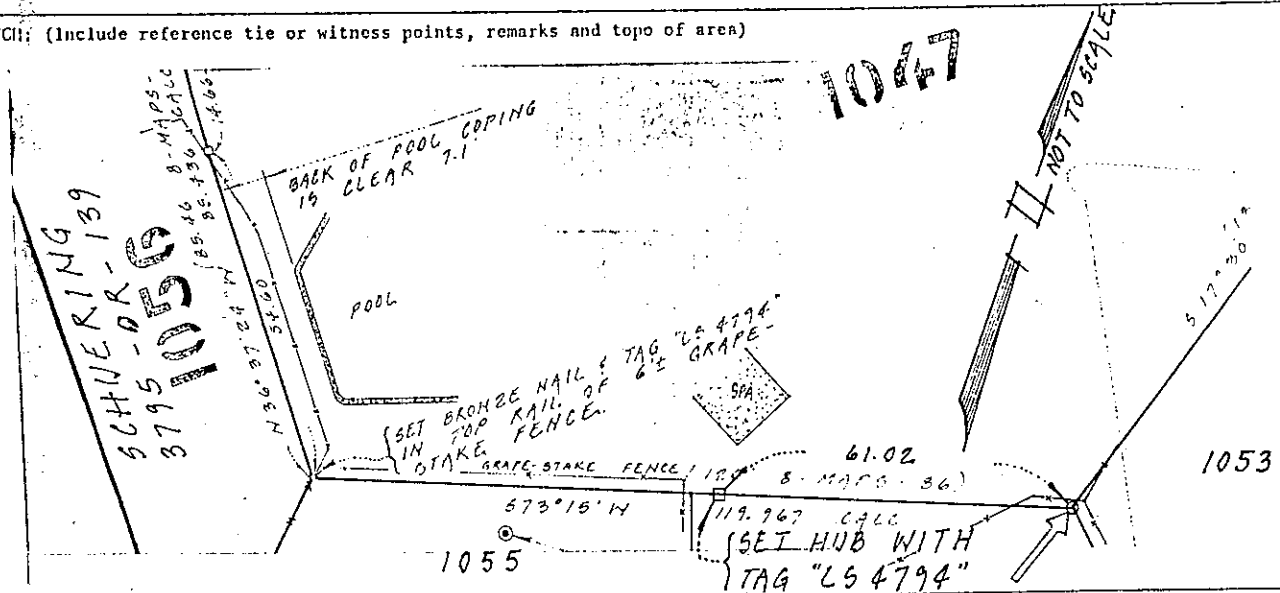
SET 3/4" I.D. IRON PIPE WITH PLASTIC PLUG "LS 4794" AT THE S.E. LY ANGLE POINT OF LOT 1047; "MAP OF GREENBRAE SUB. NO. NINE;" RECORDED IN BOOK 8 OF MAPS AT PAGE 86; AND RECORD OF SURVEY RECORDED IN BOOK 27 OF SURVEYS AT PAGE 80; MARIN COUNTY RECORDS.  
 ASSESSOR'S PARCEL NO 70-241-24 SURVEY NO 234

PHYSICAL DESCRIPTION OF MONUMENTS REBUILT, PERPETUATED OR SET

AS SHOWN

CALIFORNIA COORDINATE SYSTEM ORDER; FIRST  SECOND  THIRD   
 STATIONS USED: NGS (USC & GS) STATE  COUNTY  OTHER  STATION \_\_\_\_\_ STATION \_\_\_\_\_  
 ZONE \_\_\_\_\_ ELEVATION \_\_\_\_\_ NORTHINGS (Y) \_\_\_\_\_ EASTINGS (X) \_\_\_\_\_

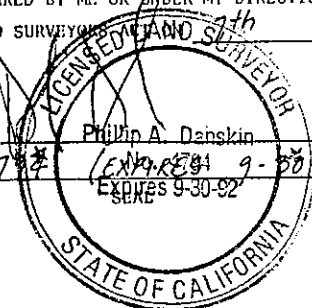
SKETCH: (Include reference tie or witness points, remarks and topo of area)



**SURVEYOR'S CERTIFICATE**

THIS CORNER RECORD WAS PREPARED BY ME OR UNDER MY DIRECTION IN CONFORMANCE WITH THE LAND SURVEYING ACT OF 1907.  
 FEBRUARY 19 91.

SIGNED: Philip A. Danskin  
 L.S. or R.C.E. No. LS 4794 (EXPIRES 9-30-92)



**COUNTY SURVEYOR'S CERTIFICATE**

THE CORNER RECORD WAS RECEIVED BY ME ON \_\_\_\_\_ 19\_\_ AND EXAMINED AND FILED IN \_\_\_\_\_

BY: \_\_\_\_\_  
 TITLE: \_\_\_\_\_  
 DOCUMENT No. \_\_\_\_\_  
 STATEMENT ON BACK OF SHEET NO

