

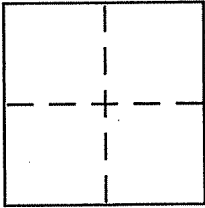
**CORNER RECORD**

Document Number APN 070-242-13

City of Greenbrae

County of Marin, California

Brief Legal Description Lot 1102 of 9 R.M. 60



**CORNER TYPE**

Government Corner  Control   
Meander  Property   
Rancho  Other   
Date of Survey 10 July 2009

**COORDINATES (Optional)**

N. \_\_\_\_\_  
E. \_\_\_\_\_  
Zone \_\_\_\_\_ NAD27  NAD83   
NAD83 Epoch \_\_\_\_\_  
Elev. \_\_\_\_\_  
Vert. Datum: NGVD29  NAVD88   
Meas. Units: Metric  Imperial

Corner - Left as found  Found and tagged  Established  Reestablished  Rebuilt

Identification and type of corner found: Evidence used to identify or procedure used to establish or reestablish the corner:

See sheet 2 of 2

A description of the physical condition of the monument as found and as set or reset:

See sheet 2 of 2

**SURVEYOR'S STATEMENT**

This Corner Record was prepared by me or under my direction in conformance with the Land Surveyor's Act on 7/14 2009

Signed [Signature] P.L.S or R.C.E. No. 6784



**COUNTY SURVEYOR'S STATEMENT**

This Corner Record was received JULY 24, 2009

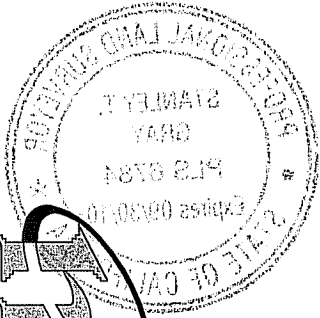
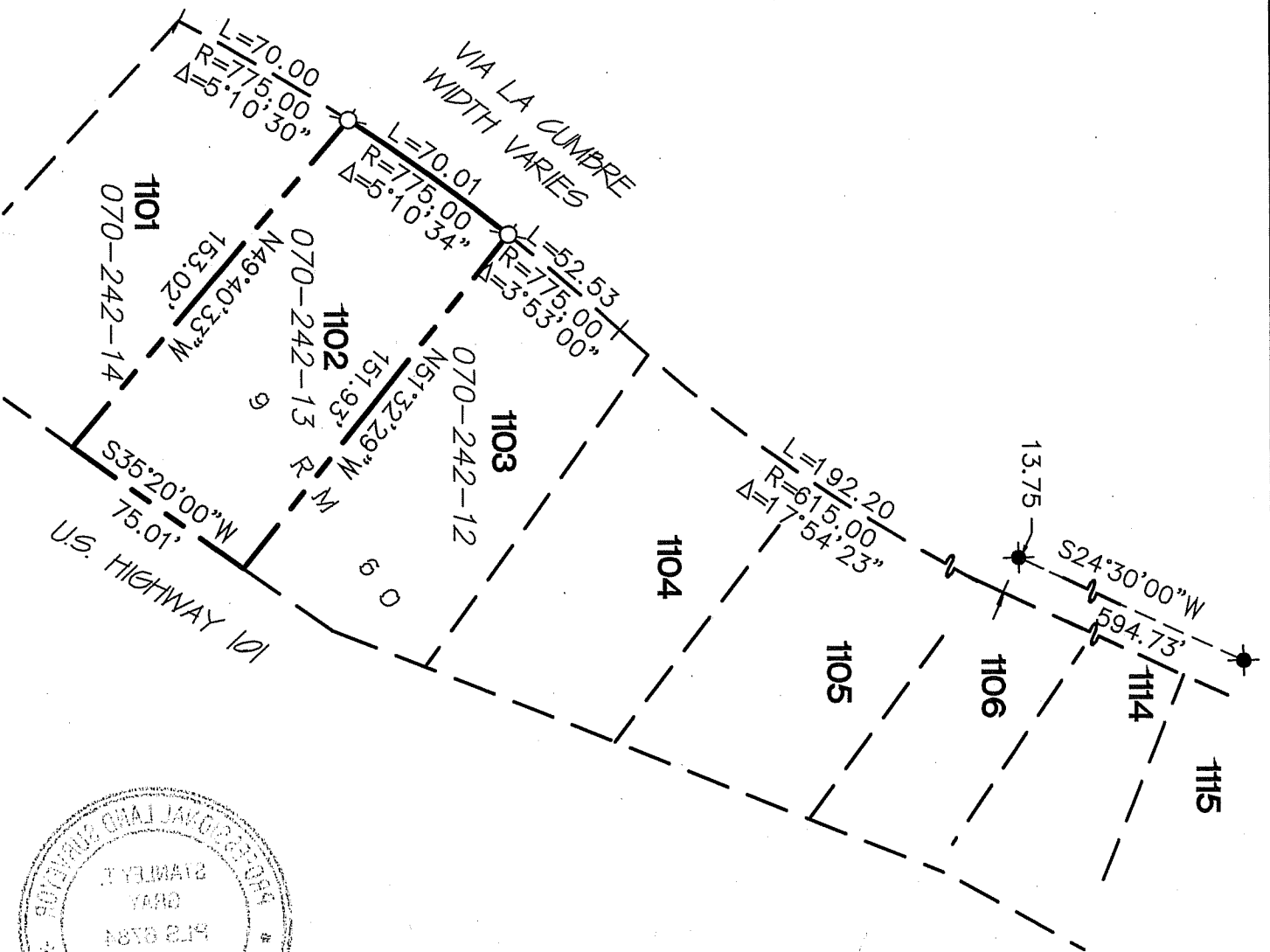
and examined and filed AUGUST 26, 2009

Signed [Signature] P.L.S or R.C.E. No. 7128

Title COUNTY SURVEYOR



County Surveyor's Comment \_\_\_\_\_



**REFERENCE**

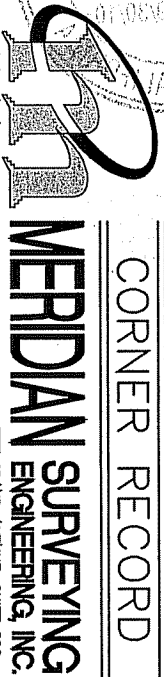
MAP OF GREENBRAE SUB NO. TEN  
 FILED FOR RECORD OCTOBER 5,  
 1956 IN VOLUME 9 OF MAPS, AT  
 PAGE 60, MARIN COUNTY RECORDS.

**LEGEND**

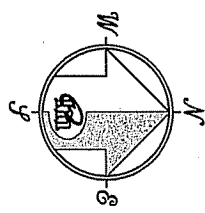
- FOUND CITY MONUMENT
- SET 5/8" REBAR WITH CAP, PLS 6784

NOTE  
 RECORD=MEASURED

**CORNER RECORD**



1812 UNION STREET  
 SAN FRANCISCO, CA 94123 (415) 440-4131  
 777 GRAND AVENUE, SUITE 202  
 SAN RAFAEL, CA 94901 (415) 456-5450  
 info@meridiansurvey.com



GRAPHIC SCALE

