

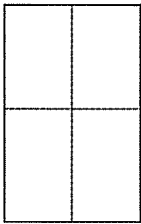
CORNER RECORD

Document Number APN 070-241-10

City of Greenbrae

County of Marin, California

Brief Legal Description Lot 1061 Greenbrae Subd. No. Nine 8 R.M. 86



CORNER TYPE

Government Corner Control

Meanderer Property

Rancho Other

Date of Survey _____

COORDINATES (Optional)

N. _____

E. _____

Zone _____ NAD27 NAD83

NAD83 Epoch _____

Elev. _____

Vert. Datum: NGVD29 NAVD88

Meas. Units: Metric Imperial

Corner - Left as found Found and tagged Established Reestablished Rebuilt

Identification and type of corner found: Evidence used to identify or procedure used to establish or reestablish the corner:
Found centerline monuments per 8 R.M. 86 held to reestablish westerly
line Lot 1061 (see reverse)

A description of the physical condition of the monument as found and as set or reset: _____
Set 1/2" rebar and tag LS 7237 at front and rear lot corners
(see reverse)

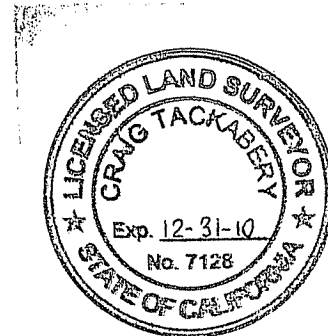
SURVEYOR'S STATEMENT

This Corner Record was prepared by me or under my direction in conformance with
the Land Surveyor's Act on July 1, 2010
Signed Michael E. Ford P.L.S. or R.C.E. No. LS 7237

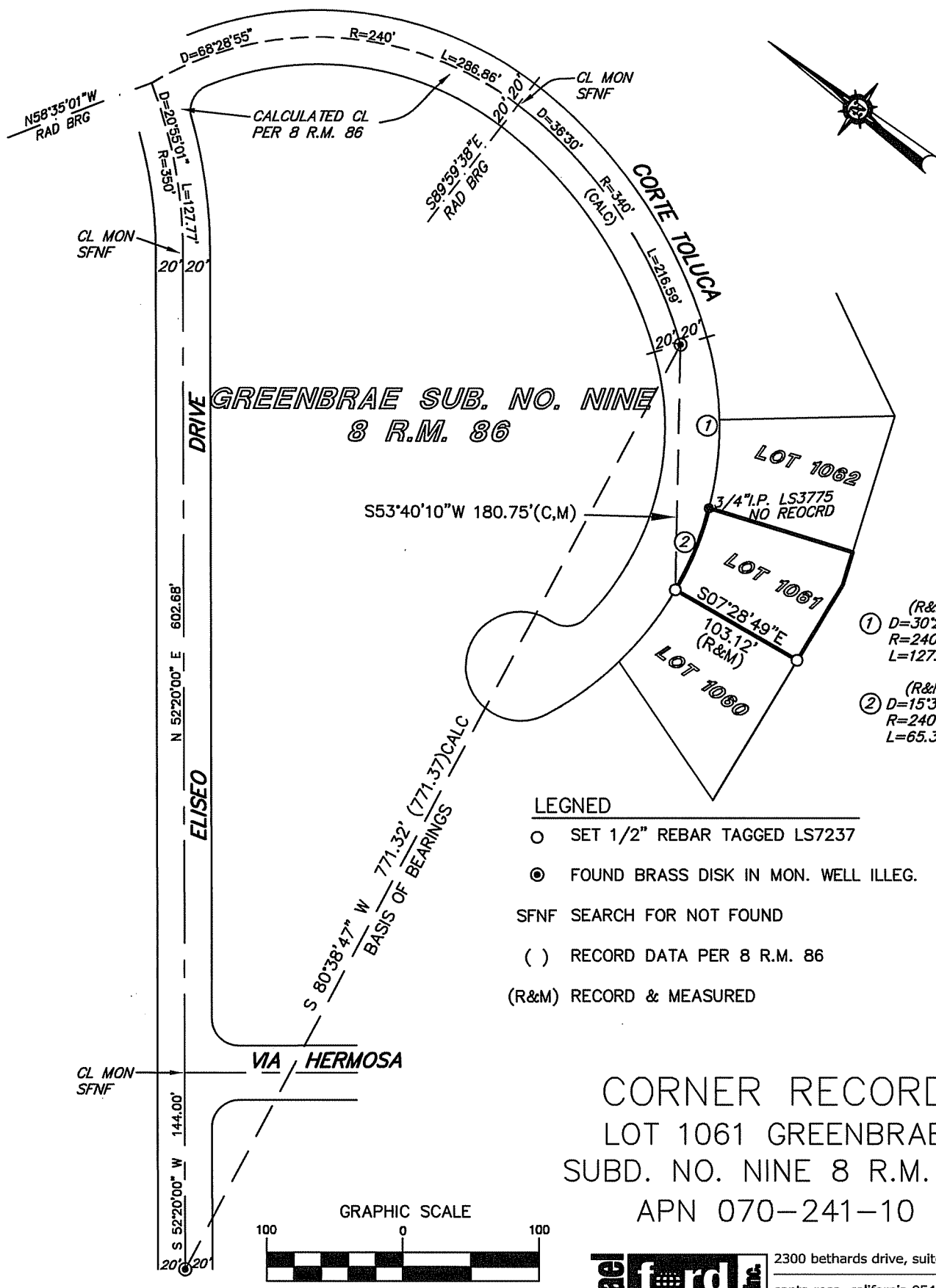


COUNTY SURVEYOR'S STATEMENT

This Corner Record was received AUGUST 2, 2010
and examined and filed AUGUST 3, 2010
Signed _____ P.L.S. or R.C.E. No. 7128
Title COUNTY SURVEYOR



County Surveyor's Comment



**GREENBRAE SUB. NO. NINE
8 R.M. 86**

S53°40'10"W 180.75'(C,M)

LOT 1062

LOT 1061

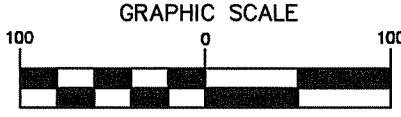
LOT 1060

- (R&M)
① D=30°25'13"
R=240'
L=127.43'
- (R&M)
② D=15°35'58"
R=240'
L=65.34'

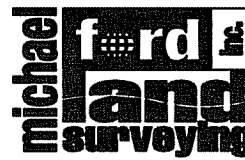
LEGEND

- SET 1/2" REBAR TAGGED LS7237
- ⊙ FOUND BRASS DISK IN MON. WELL ILLEG.
- SFNF SEARCH FOR NOT FOUND
- () RECORD DATA PER 8 R.M. 86
- (R&M) RECORD & MEASURED

**CORNER RECORD
LOT 1061 GREENBRAE
SUBD. NO. NINE 8 R.M. 86
APN 070-241-10**



(IN FEET)
1 inch = 100 ft.



2300 bethards drive, suite j
santa rosa • california 95405
p 707.542.8513 - f 707.542.1825
www.michaelfordinc.com