

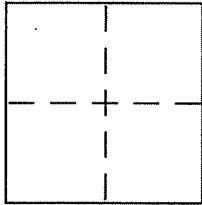
CORNER RECORD

Document Number APN 070-233-04

City of Greenbrae

County of Marin, California

Brief Legal Description Lot 1021 of 008 RM 086



CORNER TYPE

Government Corner Control
Meander Property
Rancho Other
Date of Survey May 25, 2012

COORDINATES (Optional)

N. _____
E. _____
Zone _____ NAD27 NAD83
NAD83 Epoch _____
Elev. _____
Vert. Datum: NGVD29 NAVD88
Meas. Units: Metric Imperial

Corner - Left as found Found and tagged Established Reestablished Rebuilt

Identification and type of corner found: Evidence used to identify or procedure used to establish or reestablish the corner:

see page 2 of 2

A description of the physical condition of the monument as found and as set or reset:

see page 2 of 2

SURVEYOR'S STATEMENT

This Corner Record was prepared by me or under my direction in conformance with the Land Surveyor's Act on 8/20 2012

Signed [Signature] P.L.S or R.C.E. No. 6784



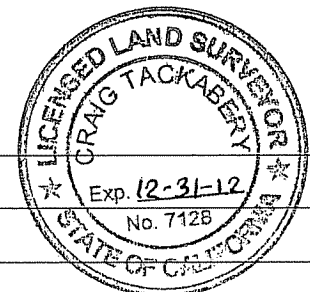
COUNTY SURVEYOR'S STATEMENT

This Corner Record was received 8/24, 2012

and examined and filed 8-29-2012

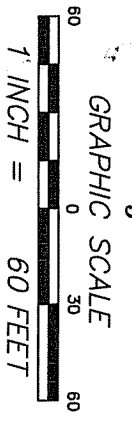
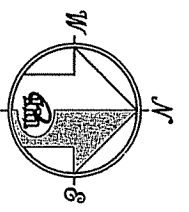
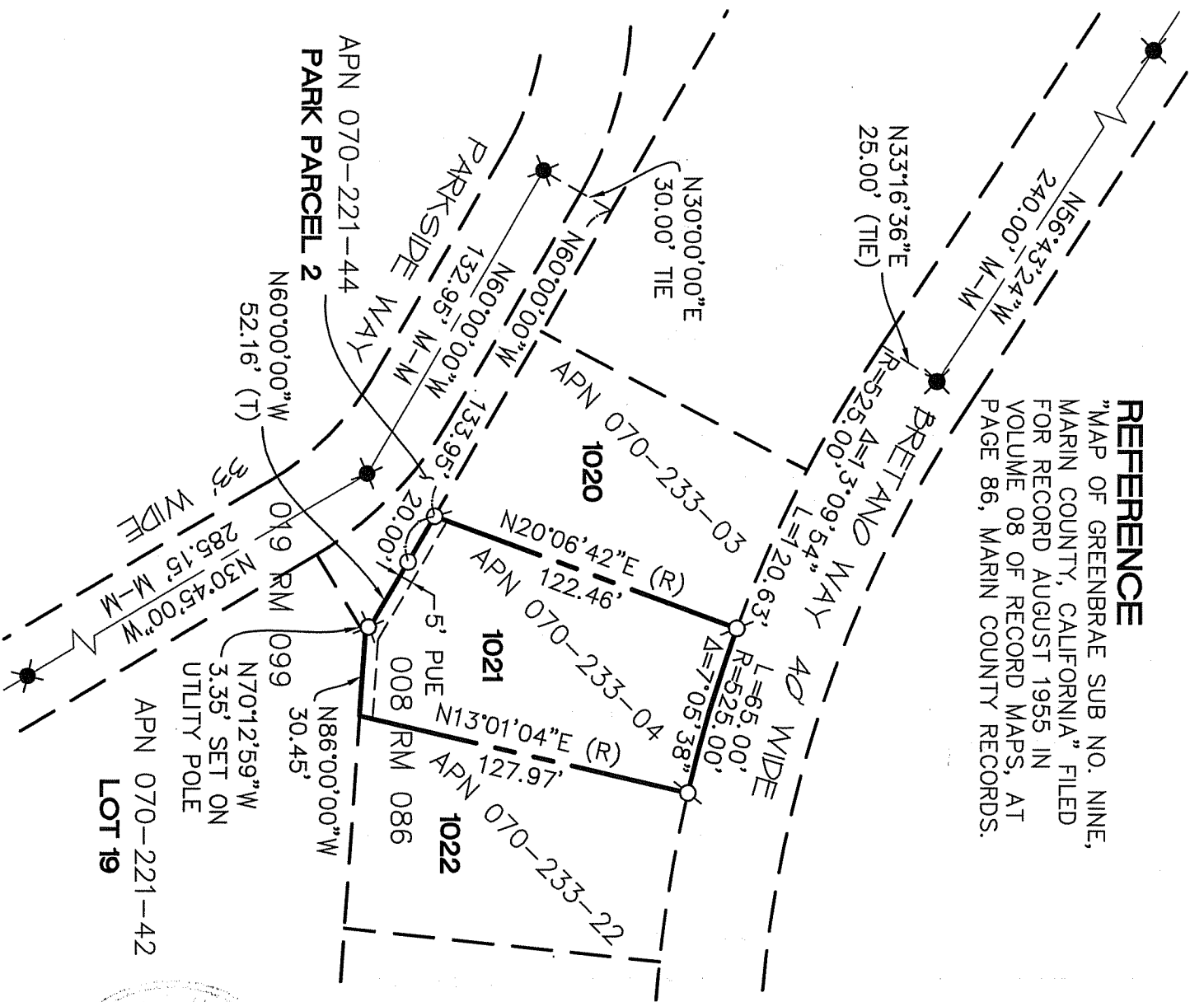
Signed [Signature] P.L.S or R.C.E. No. 7128

Title COUNTY SURVEYOR



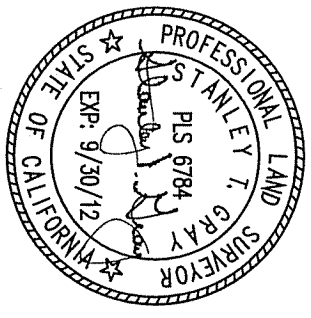
County Surveyor's Comment _____

REFERENCE
 "MAP OF GREENBRAE SUB NO. NINE,
 MARIN COUNTY, CALIFORNIA" FILED
 FOR RECORD AUGUST 1955 IN
 VOLUME 08 OF RECORD MAPS, AT
 PAGE 86, MARIN COUNTY RECORDS.



LEGEND

- FOUND STANDARD STREET MONUMENT PER 19 RM 99
- ⌘ SET SHINNER PLS 6784
- ⊗ SET 5/8" REBAR WITH CAP, PLS 6784
- SET TACK WITH BRASS WASHER PLS 6784
- PUE PUBLIC UTILITY EASEMENT
- (T) TOTAL
- NOTE
 RECORD=MEASURED



08/20/12

CORNER RECORD

MERIDIAN SURVEYING ENGINEERING, INC.

2958 VAN NESS AVENUE
 SAN FRANCISCO, CA 94109
 (415) 440-4131
 info@meridiansurvey.com

777 GRAND AVENUE, SUITE 202
 SAN RAFAEL, CA 94901
 (415) 456-5450

