

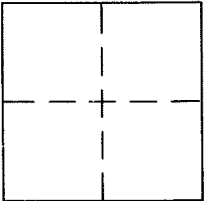
CORNER RECORD

Document Number 070-232-12

City of UNINCORPORATED

County of MARIN, California

Brief Legal Description LOT 1012 AS SHOWN ON THE MAP OF GREENBRAE SUB. No. NINE, 8 MAPS 86, MARIN COUNTY RECORDS



CORNER TYPE

Government Corner Control
 Meander Property
 Rancho Other
 Date of Survey 3/22/2017

COORDINATES (Optional)

N. _____
 E. _____
 Zone _____ NAD27 NAD83
 NAD83 Epoch _____
 Elev. _____
 Vert. Datum: NGVD29 NAVD88
 Meas. Units: Metric Imperial

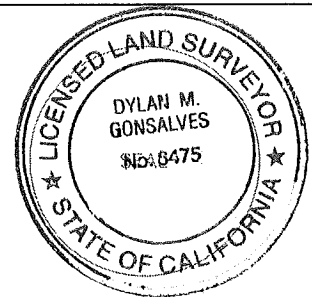
Corner - Left as found Found and tagged Established Reestablished Rebuilt

Identification and type of corner found: Evidence used to identify or procedure used to establish or reestablish the corner:
SEE PAGE 2

A description of the physical condition of the monument as found and as set or reset:
SEE PAGE 2

SURVEYOR'S STATEMENT

This Corner Record was prepared by me or under my direction in conformance with the Land Surveyor's Act on March 24, 2017
 Signed [Signature] P.L.S. or R.C.E. No. 8475



COUNTY SURVEYOR'S STATEMENT

This Corner Record was received April 5, 2017
 and examined and filed MAY 02, 2017
 Signed [Signature] P.L.S. or R.C.E. No. 9292
 Title DEPUTY C.S.



County Surveyor's Comment _____

LEGEND

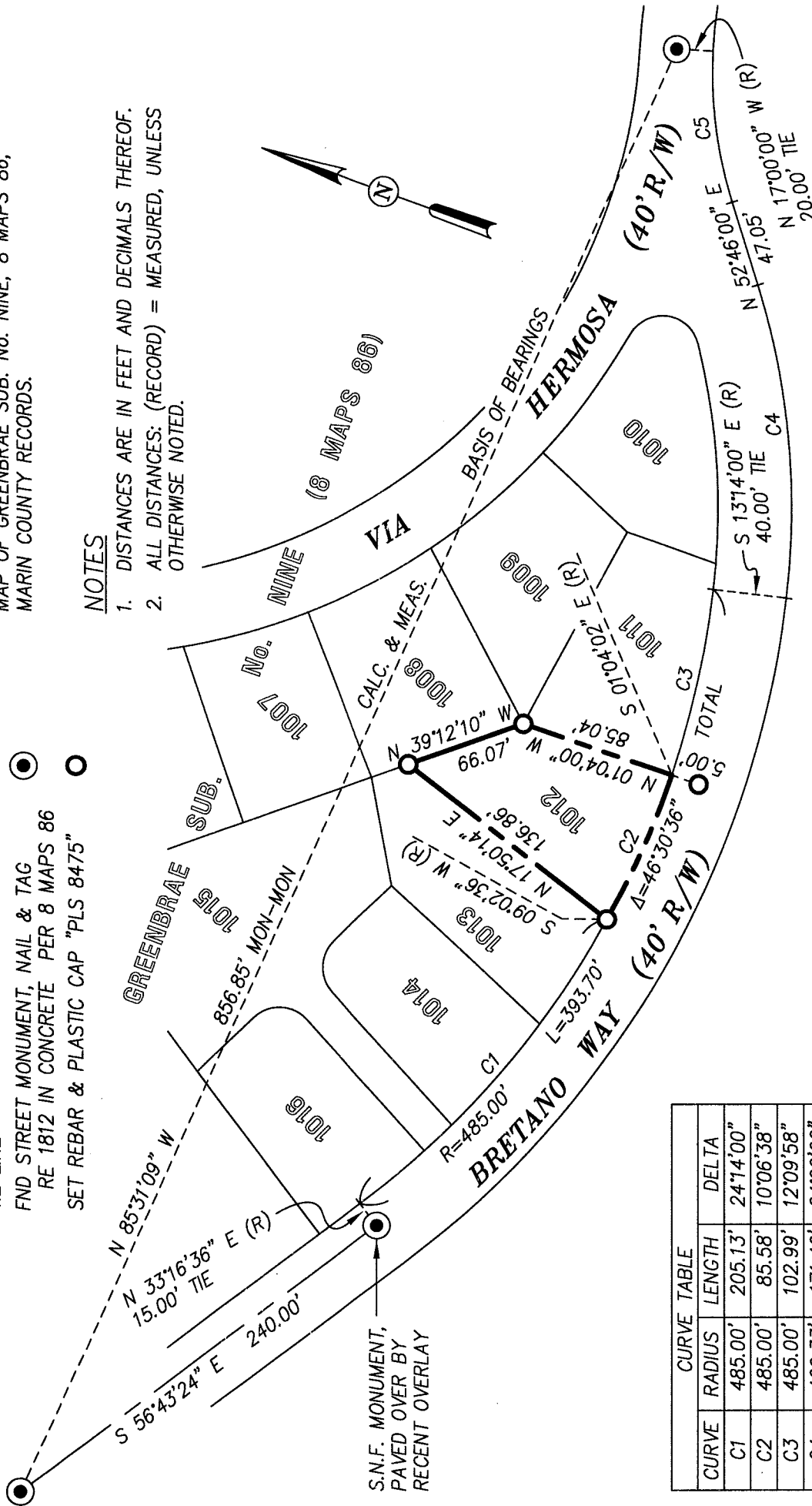
- BOUNDARY
- MONUMENT LINE
- - - TIE LINE
- ⊙ FND STREET MONUMENT, NAIL & TAG
RE 1812 IN CONCRETE PER 8 MAPS 86
- SET REBAR & PLASTIC CAP "PLS 8475"

BASIS OF BEARINGS

THE CALCULATED BEARING NORTH 85°31'09" WEST BETWEEN FOUND STANDARD STREET MONUMENTS SHOWN HEREON USING INFORMATION SHOWN ON THE MAP OF GREENBRAE SUB. No. NINE, 8 MAPS 86, MARIN COUNTY RECORDS.

NOTES

1. DISTANCES ARE IN FEET AND DECIMALS THEREOF.
2. ALL DISTANCES: (RECORD) = MEASURED, UNLESS OTHERWISE NOTED.



CURVE TABLE			
CURVE	RADIUS	LENGTH	DELTA
C1	485.00'	205.13'	24°14'00"
C2	485.00'	85.58'	10°06'38"
C3	485.00'	102.99'	12°09'58"
C4	409.33'	171.46'	24°00'00"
C5	235.00'	82.99'	20°14'00"



DMG ENGINEERING, INC.
 30 OAKVUE COURT, PLEASANT HILL, CALIF. 94523
 PHONE (925) 787-0463 • FAX (925) 287-8503
 JOB: 17-35 APN 070-232-12 DATE: 3/24/17