

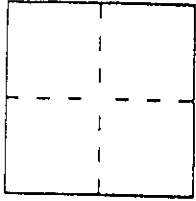
CORNER RECORD

Document Number A.P. 70-212-12

City of GREENBRAE

County of MARIN, California

Brief Legal Description LOT 726 T.R.M.64



CORNER TYPE

Government Corner Control
Meander Property
Rancho Other
Date of Survey 3/27/00

COORDINATES (Optional)

N. _____
E. _____
Zone _____, Datum _____
Elev. _____

Corner — Left as found Found and tagged Established Reestablished Rebuilt

Identification and type of corner found: Evidence used to identify or procedure used to establish or reestablish the corner:

PROPERTY CORNER ESTABLISHED FROM THE
STREET MONUMENTS SHOWN ON T.R.M.64

A description of the physical condition of the monument as found and as set or reset:

SET 3/4" PIPE & PLUG P.L.S. 4694.

SURVEYOR'S STATEMENT

This Corner Record was prepared by me or under my direction in conformance with the Land Surveyors' Act on 3/27/00

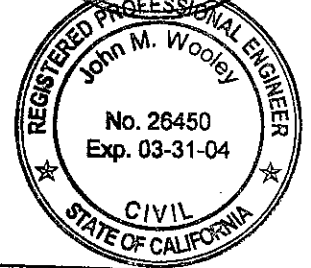
Signed Lawrence P. Doyle L.S. or R.C.E. Number P.L.S. 4694

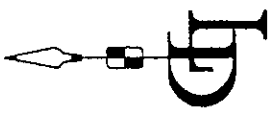
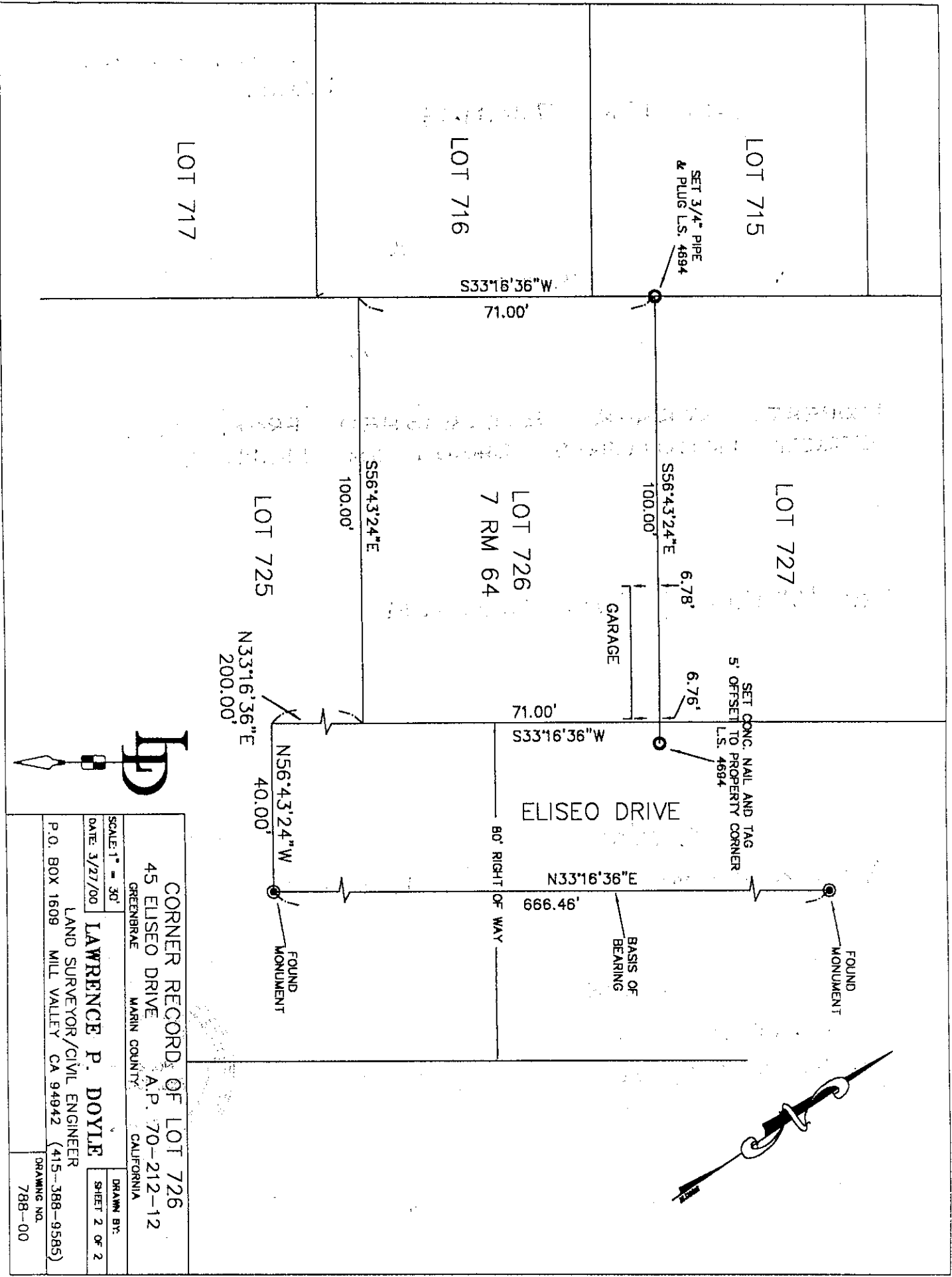
COUNTY SURVEYOR'S STATEMENT

This Corner Record was received JUNE 30, 2000 and examined

and filed JULY 10, 2000
Signed John M. Wooley Title DEPUTY

County Surveyor's Comment _____





CORNER RECORD OF LOT 726
 45 ELISEO DRIVE
 A.P. 70-212-12
 GREENBRAE MARIN COUNTY CALIFORNIA
LAWRENCE P. DOYLE
 LAND SURVEYOR/CIVIL ENGINEER
 P.O. BOX 1609 MILL VALLEY CA 94942 (415-388-9585)

SCALE: 1" = 30'	DRAWN BY:
DATE: 3/27/00	SHEET 2 OF 2
DRAWING NO. 788-00	