

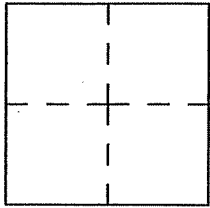
# CORNER RECORD

Document number A.P.N. 070-201-52

City of GREENBRAE

County of MARIN, California

Brief Legal Description BEING LOT 47 AS SHOWN UPON "MAP OF GREENBRAE SUB. NO. 1",  
6 R.M. 7, MARIN COUNTY RECORDS



### CORNER TYPE

Government Corner  Control   
Meander  Property   
Rancho  Other   
Date of Survey \_\_\_\_\_

### COORDINATES

N. \_\_\_\_\_  
E. \_\_\_\_\_  
Zone \_\_\_\_\_ Datum \_\_\_\_\_  
Elev. \_\_\_\_\_

Corner-- Left as found  found and tagged  Established  Reestablished  Rebuilt

Identification and type of corner found: Evidence used to identify or procedure used to establish or reestablish the corner  
UTILIZED MONUMENTS AS SHOWN UPON 6 R.M. 7 AS A BASIS OF BEARINGS  
TO MONUMENT PROPERTY LINE POINTS OF LOT 47 AS SHOWN UPON ATTACHED  
DRAWING.

A description of the physical condition of the monument as found and as set or reset.  
FOUND WELL MONUMENTS, WHICH MEASURED PER 6 R.M. 7

### SURVEYOR'S STATEMENT

This Corner Record was prepared by me or under my direction in conformance with  
the Land Surveyor's Act on December 26 2008.

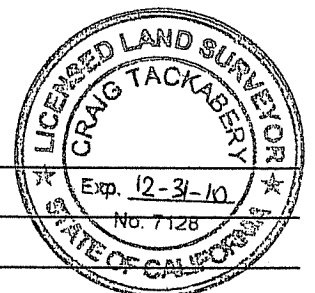
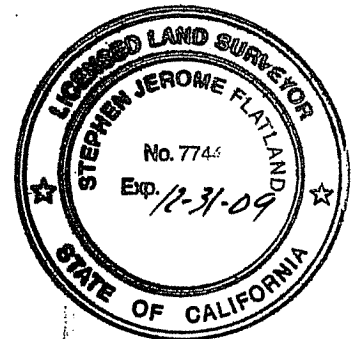
Signed [Signature] L.S. Number 7744

### COUNTY SURVEYOR'S STATEMENT

This Corner Record was received DECEMBER 29, 2008 and examined  
and filed FEBRUARY 9, 2009

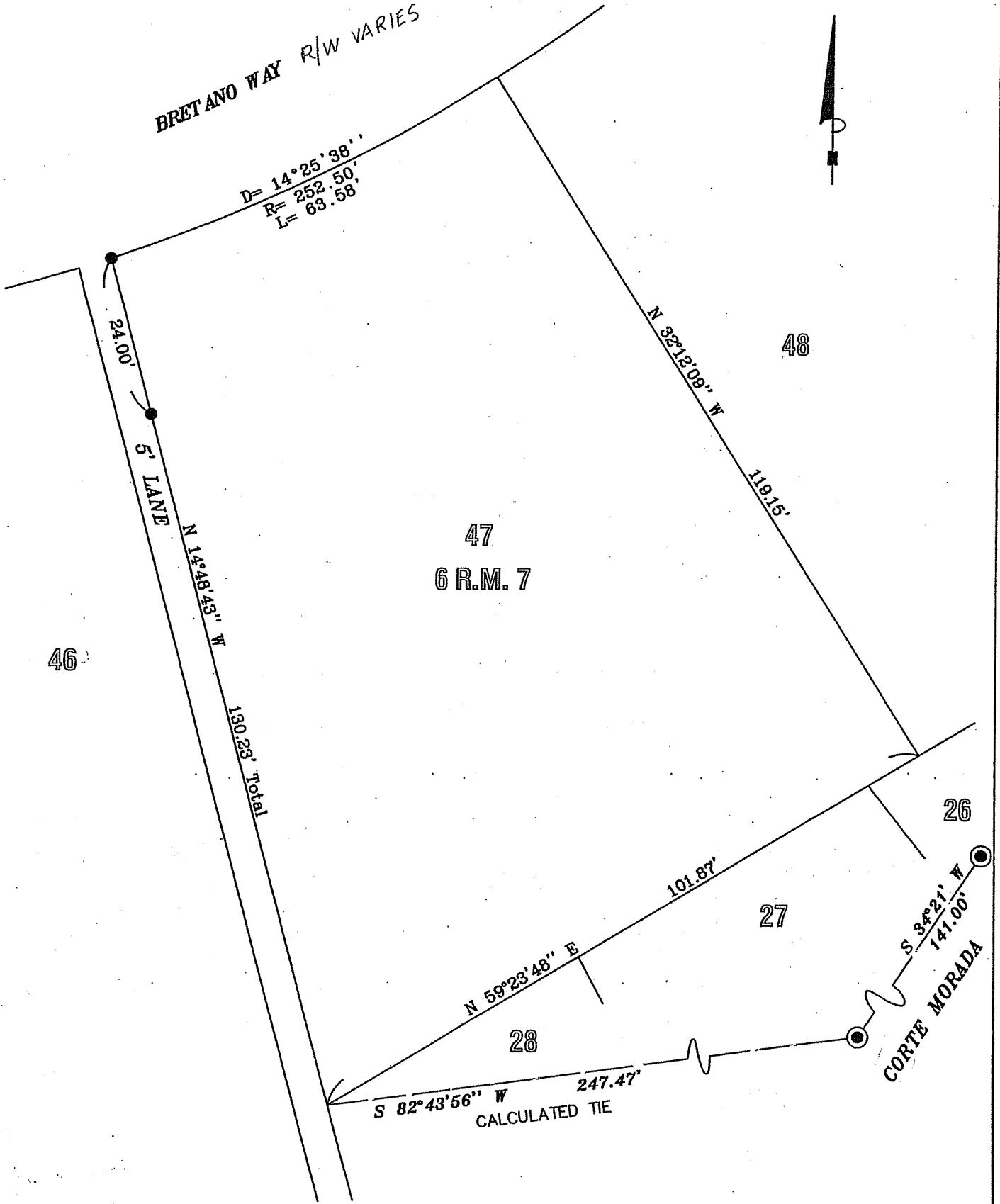
Signed [Signature] Title COUNTY SURVEYOR

County Surveyor's Comment \_\_\_\_\_



BRETANO WAY R/W VARIES

$D = 14^{\circ}25'38''$   
 $R = 252.50'$   
 $L = 63.58'$



46

47  
6 R.M. 7

48

26

27

28

24.00'

5' LANE

N 14°48'43" W

130.23' Total

N 32°12'09" W

119.15'

N 59°23'48" E

101.87'

S 82°43'56" W

247.47'

CALCULATED TIE

S 34°21' W

141.00'

CORTE MORADA

- FOUND WELL MONUMENT PER 6 R.M. 7
- SET 1/2" REBAR & PLASTIC CAP, P.L.S. 7744