

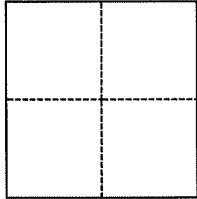
# CORNER RECORD

Agency Index CR 22-023  
Document Number APN 070-201-44

City of KENTFIELD County of MARIN, California  
Brief Legal Description INT OF SIR FRANCIS DRAKE BLVD & MANOR RD, SHOWN ON 14 OS 12

### CORNER TYPE

### COORDINATES (Optional)



- Government Corner
- Meander
- Rancho
- Control
- Property
- Other

Date of Survey October 14, 2021

N. \_\_\_\_\_ E. \_\_\_\_\_  
 Elevation \_\_\_\_\_  
 Units  Metric  U.S. Survey Foot  
 Horizontal Datum \_\_\_\_\_  
 Zone \_\_\_\_\_ Epoch Date \_\_\_\_\_  
 Vertical Datum \_\_\_\_\_  
 Complies with Public Resources Code §§8801-8819  
 Complies with Public Resources Code §§8890-8902

- PLS Act Ref.:  8765(d)  8771  8773  Other:
- Corner/Monument:  Left as found  Established  Rebuilt  Pre-Construction  
 Found and tagged  Reestablished  Referenced  Post-Construction

Narrative of corner identified and monument as found, set, reset, replaced, or removed:  
 See sheet #2 for description(s):

### SURVEYOR'S STATEMENT

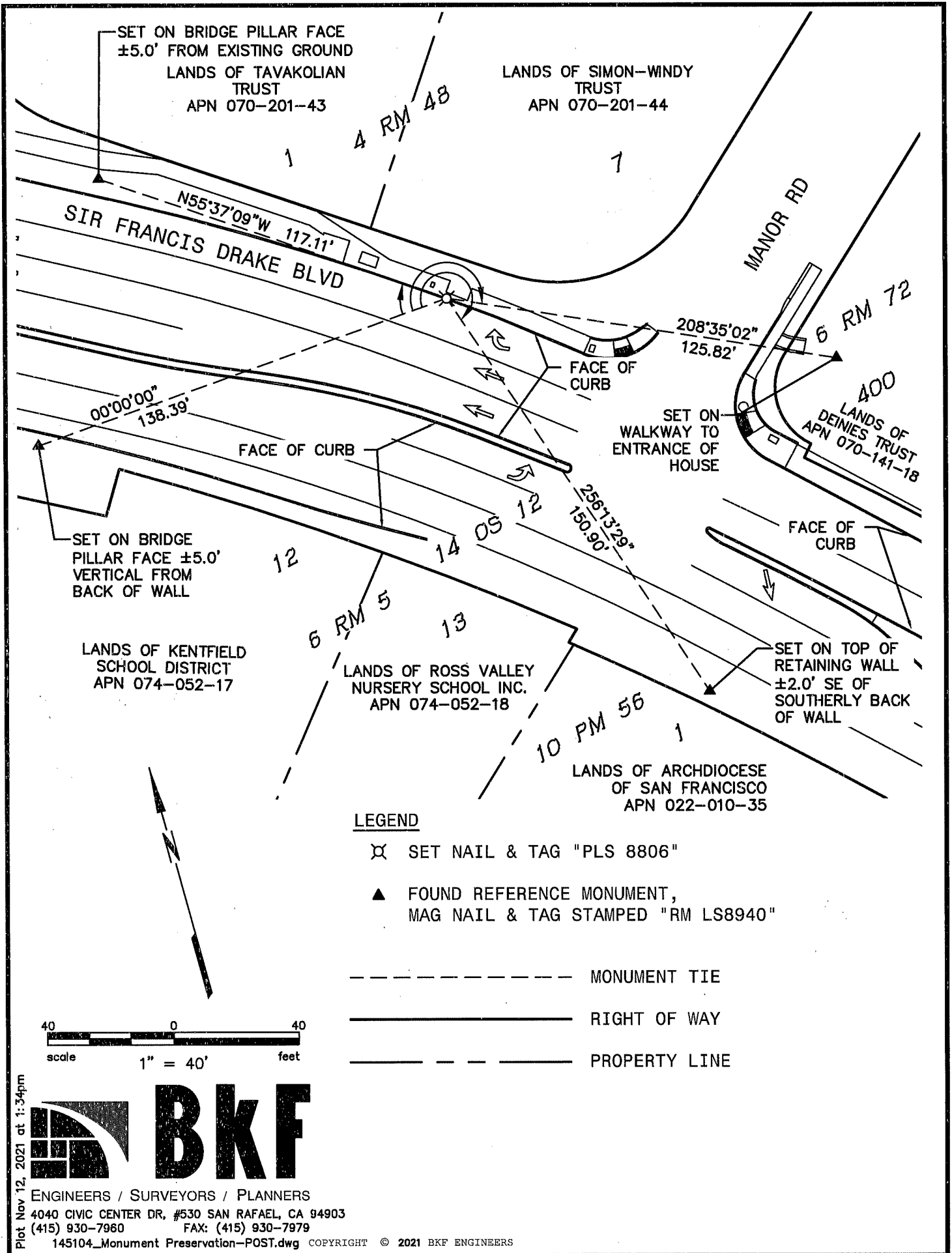
This Corner Record was prepared by me or under my direction in conformance with  
 the Professional Land Surveyors' Act on October 14, 2021  
 Signed [Signature] P.L.S. or R.C.E. No. 8940



### COUNTY SURVEYOR'S STATEMENT

This Corner Record was received 03/06/22  
 and examined and filed 03/16/22  
 Signed [Signature] P.L.S. or R.C.E. No. 9292  
 Title DEPUTY  
 County Surveyor's Comment \_\_\_\_\_





Plot Nov 12, 2021 at 1:34pm



ENGINEERS / SURVEYORS / PLANNERS  
 4040 CIVIC CENTER DR, #530 SAN RAFAEL, CA 94903  
 (415) 930-7960 FAX: (415) 930-7979

145104\_Monument Preservation-POST.dwg COPYRIGHT © 2021 BKF ENGINEERS