

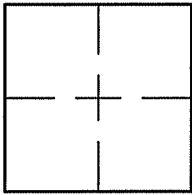
CORNER RECORD

Document Number A.P.# 070-201-40

City of GREENBRAE

County of MARIN, California

Brief Legal Description LOT 10 "MAP OF GREENBRAE SUB.1" 6 R.M.7



CORNER TYPE                      COORDINATES (Optional)

Government Corner       Control

Meander                       Property

Rancho                       Other

Date of Survey 12-8-05

N. \_\_\_\_\_  
 E. \_\_\_\_\_  
 Zone \_\_\_\_\_ NAD27       NAD83   
 NAD83 Epoch \_\_\_\_\_  
 Elev. \_\_\_\_\_  
 Vert. Datum:      NGVD29       NAVD88   
 Meas. Units:      Metric       Imperial

Corner- Left as found  Found and tagged  Established  Reestablished  Rebuilt

Identification and type of corner found: Evidence used to identify or procedure used to establish or reestablish the corner:

ESTABLISHED WESTERN PROPERTY LINE OF LOT 10 FROM THE STREET MONUMENTS AS DELINEATED ON THE MAP OF GREENBRAE, SUB. 1, 6 R.M. 7

A description of the physical condition of the monument as found and as set or reset: SEE SHEET 2.

SURVEYOR'S STATEMENT

This Corner Record was prepared by me or under my direction in conformance with

the Land Surveyor's Act on DECEMBER 15 2005

Signed Lawrence P. Doyle P.L.S. or R.C.E. No. P.L.S. 4694



COUNTY SURVEYOR'S STATEMENT

This Corner Record was received APRIL 3, 2006

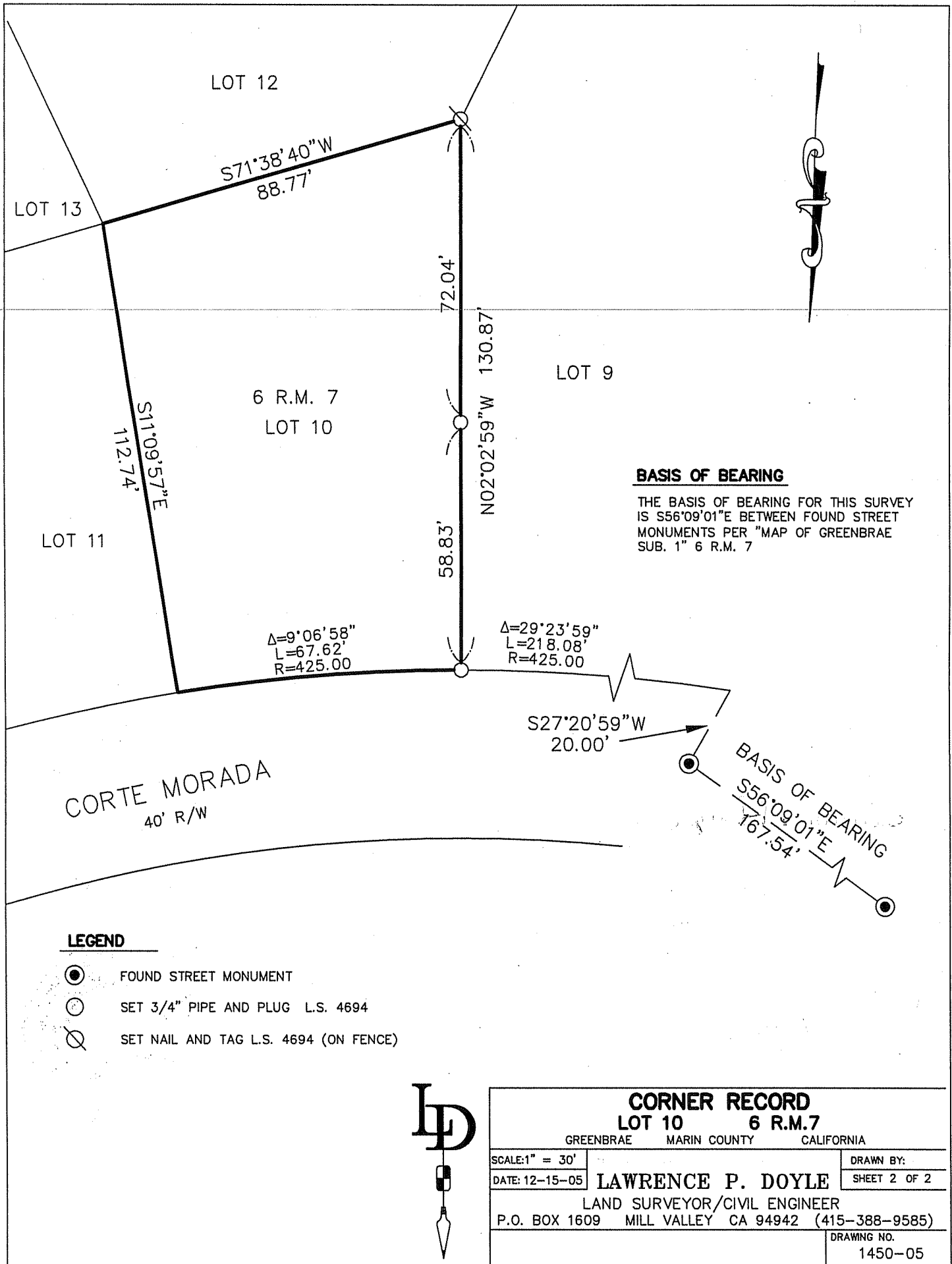
and examined and filed MAY 2, 2006

Signed [Signature] P.L.S. or R.C.E. No. 7128

Title COUNTY SURVEYOR

County Surveyor's Comment \_\_\_\_\_





**BASIS OF BEARING**

THE BASIS OF BEARING FOR THIS SURVEY IS S56°09'01"E BETWEEN FOUND STREET MONUMENTS PER "MAP OF GREENBRAE SUB. 1" 6 R.M. 7

$\Delta=9^{\circ}06'58''$   
 $L=67.62'$   
 $R=425.00'$

$\Delta=29^{\circ}23'59''$   
 $L=218.08'$   
 $R=425.00'$

CORTE MORADA  
 40' R/W

**LEGEND**

- FOUND STREET MONUMENT
- SET 3/4" PIPE AND PLUG L.S. 4694
- ⊗ SET NAIL AND TAG L.S. 4694 (ON FENCE)



<b>CORNER RECORD</b>		
<b>LOT 10 6 R.M.7</b>		
GREENBRAE MARIN COUNTY CALIFORNIA		
SCALE: 1" = 30'		DRAWN BY:
DATE: 12-15-05	<b>LAWRENCE P. DOYLE</b>	SHEET 2 OF 2
LAND SURVEYOR/CIVIL ENGINEER		
P.O. BOX 1609 MILL VALLEY CA 94942 (415-388-9585)		
		DRAWING NO.
		1450-05