

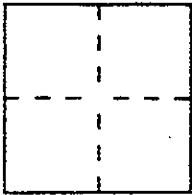
# CORNER RECORD

Document Number A.P.N. 70-201-37

City of Unincorporated

County of Marin, California

Brief Legal Description Lot 13 Greenbrae Sub. No. One 6 Rm 7



### CORNER TYPE

Government Corner  Control   
 Meander  Property   
 Rancho  Other   
 Date of Survey \_\_\_\_\_

### COORDINATES (Optional)

N. \_\_\_\_\_  
 E. \_\_\_\_\_  
 Zone \_\_\_\_\_ Datum \_\_\_\_\_  
 Elev. \_\_\_\_\_

Corner — Left as found  Found and tagged  Established  Reestablished  Rebuilt

Identification and type of corner found: Evidence used to identify or procedure used to establish or reestablish the corner:

Found standard monuments on the centerline of  
Corte Morada per 6 Rm 7

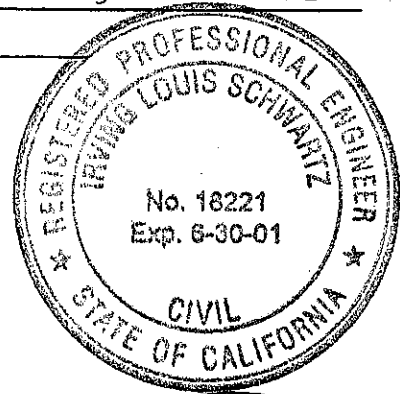
A description of the physical condition of the monument as found and as set or reset: \_\_\_\_\_

Set 3/4" iron pipe and tag "RCE 18221" at westerly, southerly,  
northerly corners and at westerly corner at Corte Morada and  
at B.C. on the northwesterly boundary; set nail and tag "RCE 18221"  
on top of fence rail at most easterly corner.

### SURVEYOR'S STATEMENT

This Corner Record was prepared by me or under my direction in conformance with the Land Surveyors' Act on OCTOBER 23, 2000

Signed [Signature] R.C.E. Number 18221



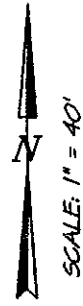
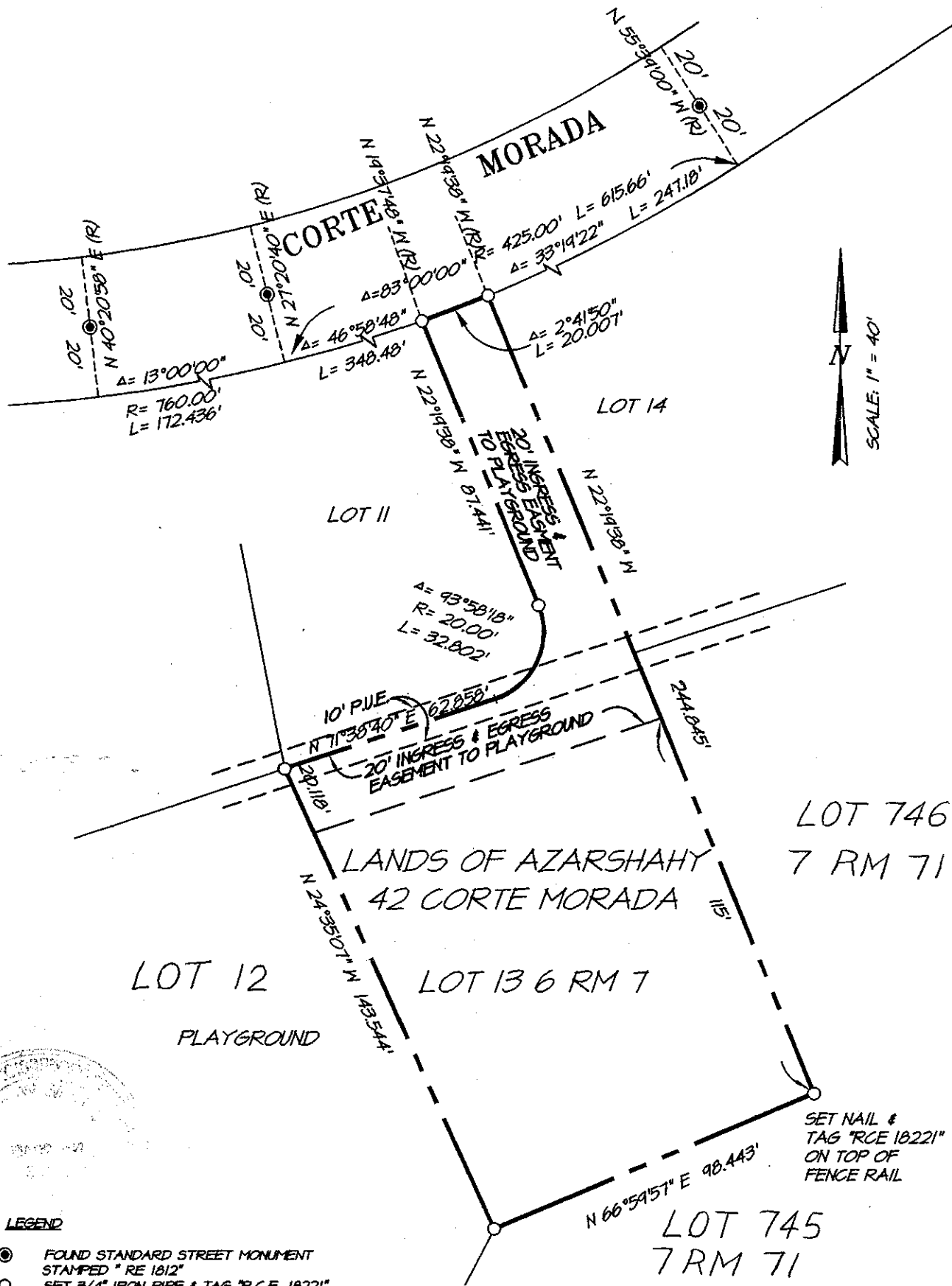
### COUNTY SURVEYOR'S STATEMENT

This Corner Record was received 10-25-2000 and examined and filed 10-25-2000

Signed [Signature] Title DEPUTY



County Surveyor's Comment \_\_\_\_\_



**LEGEND**

- FOUND STANDARD STREET MONUMENT STAMPED "RE 1812"
- SET 3/4" IRON PIPE & TAG "R.C.E. 18221" UNLESS NOTED OTHERWISE
- (R) = RADIAL BEARING

**NOTE:**

ALL DIMENSIONS SHOWN HEREON ARE PER 6 RM 7 UNLESS OTHERWISE NOTED.

DATE: 10/20/00  
 DHS FILE: 7160CREC.DWG

A.P.N. 70-201-37



**LL SCHWARTZ ASSOCIATES, INC.®**  
 CIVIL ENGINEERING AND LAND SURVEYING

79 GALLI DRIVE NOVATO, CA 94949 (415)883-9200 FAX 883-2763

LOT 745  
 7 RM 71

**EXHIBIT "A"**