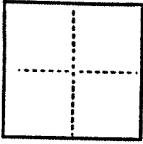


A.R. #70-181-07

CORNER RECORD

COUNTY OF Marin T. _____ R. _____ MERIDIAN _____ CALIFORNIA
CORNER TYPE: GOVT. CORNER MEANDER RANCHO CONTROL OTHER Subd. Lot Corner



Marin Assessor's Parcel 70-181-07
Lot 172 of G R.M. 7

Greenbrae

CORNER — LEFT AS FOUND FOUND AND TAGGED REESTABLISHED OBLITERATED CORNER REBUILT

PHYSICAL DESCRIPTION OF CORNER FOUND; EVIDENCE AND METHOD USED TO IDENTIFY OR REESTABLISH

Used Subd. Monuments to reestablish corners.

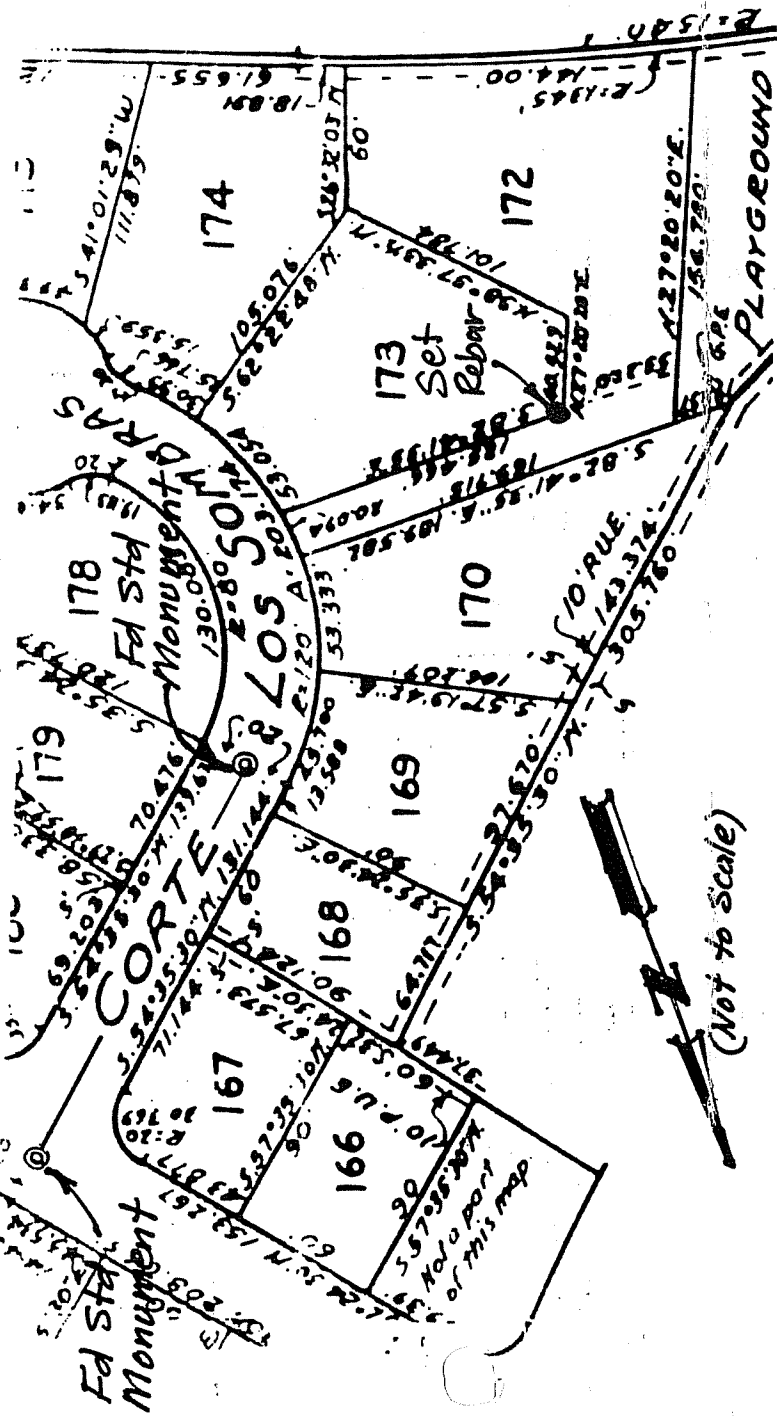
PHYSICAL DESCRIPTION OF MONUMENTS REBUILT OR PERPETUATED

Set 1/2" Rebar and Plastic Cap Embossed LS 5290

CALIFORNIA COORDINATE SYSTEM ORDER: FIRST SECOND THIRD STATION
STATIONS USED: NGS (USC & GS) COUNTY OTHER EASTINGS (X) _____
ZONE _____ ELEVATION _____ NORTHINGS (Y) _____

(Fold)

SKETCH: (Include reference tie or witness points, remarks and topo of area)



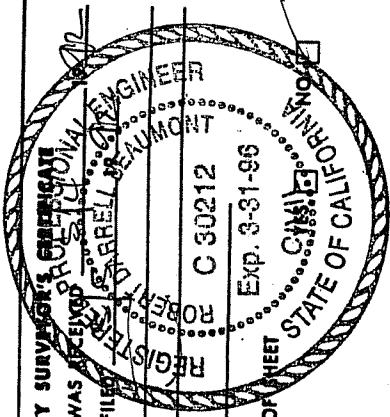
(Not to Scale)

SURVEYOR'S CERTIFICATE

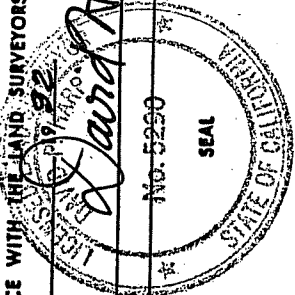
THIS CORNER RECORD WAS PREPARED BY ME OR UNDER MY DIRECTION IN CONFORMANCE WITH THE LAND SURVEYORS ACT ON April 29

SIGNED: David Stapp
L.S. or R.C.E. No.: No. 5290

exp 12/95

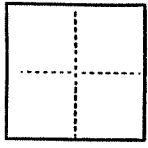


COUNTY SURVEYOR'S CERTIFICATE
THE CORNER RECORD WAS RECEIVED AND EXAMINED AND FILED IN THE PUBLIC RECORDS OF THE COUNTY OF CALIFORNIA
BY: _____
TITLE: _____
DOCUMENT No. _____
STATEMENT ON BACK OF SHEET



CORNER RECORD

COUNTY OF Marin T. _____ R. _____ MERIDIAN _____ CALIFORNIA
CORNER TYPE: GOV'T. CORNER MEANDER RANCHO CONTROL OTHER Subd. Lot Corner
CORNER IDENTIFICATION — DATE OF VISIT _____ 19____



Marin Assessor's Parcel 70-181-07
Lot 172 of G R.M. 7

CORNER — LEFT AS FOUND FOUND AND TAGGED REESTABLISHED OBLITERATED CORNER RESULT Greenbrae

PHYSICAL DESCRIPTION OF CORNER FOUND; EVIDENCE AND METHOD USED TO IDENTIFY OR REESTABLISH

Used Subd. Monuments to reestablish corners.

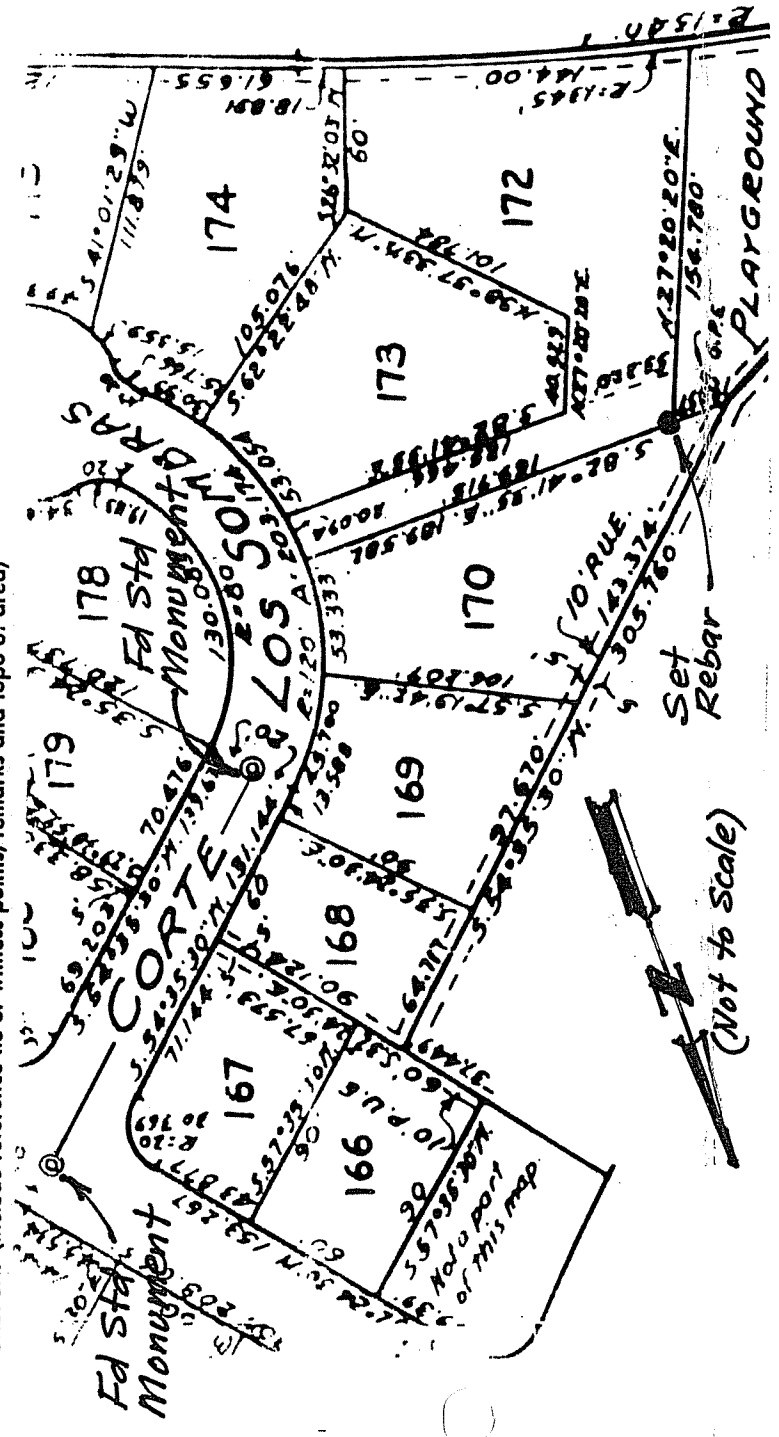
PHYSICAL DESCRIPTION OF MONUMENTS RESULT OR PERPETUATED

Set 1/2" Rebar and Plastic Cap Embossed LS 5290

CALIFORNIA COORDINATE SYSTEM ORDER: FIRST SECOND THIRD STATION
STATIONS USED: NGS (USC & GS) STATE COUNTY OTHER EASTINGS (X) _____
ZONE _____ ELEVATION _____ NORTHINGS (Y) _____

(Fold)

SKETCH: (Include reference tie or witness points, remarks and topo of area)



SURVEYOR'S CERTIFICATE

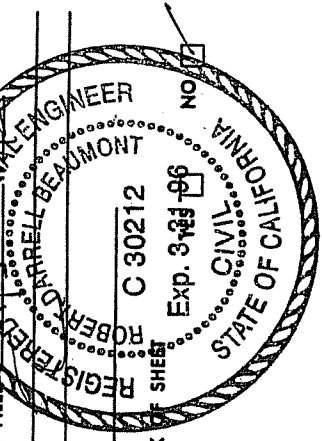
THIS CORNER RECORD WAS PREPARED BY ME OR UNDER MY DIRECTION IN CONFORMANCE WITH THE LAND SURVEYORS ACT ON April 29

SIGNED: David J. Harp
L.S. or R.C.E. No.: No. 5290

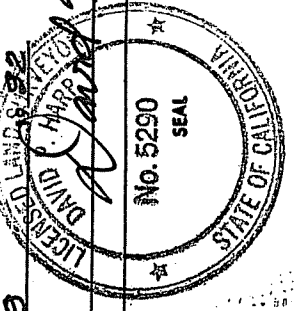
exp 12/95

COUNTY SURVEYOR'S CERTIFICATE

THE CORNER RECORD WAS RECEIVED AND EXAMINED AND FILED _____ 1990

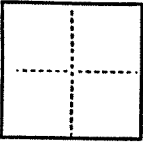


BY: _____ TITLE: _____
DOCUMENT No. _____ SHEET _____
STATEMENT ON BACK OF SHEET _____



CORNER RECORD

COUNTY OF Marin T. _____ R. _____ MERIDIAN _____ CALIFORNIA
 CORNER TYPE: GOV'T. CORNER MEANDER RANCHO CONTROL OTHER Subd. Lot Corner
 CORNER IDENTIFICATION — DATE OF VISIT _____ 19____



Marin Assessor's Parcel 70-181-07
Lot 172 of G R.M. 7

CORNER — LEFT AS FOUND FOUND AND TAGGED REESTABLISHED OBLITERATED CORNER REBUILT
Greenbrae

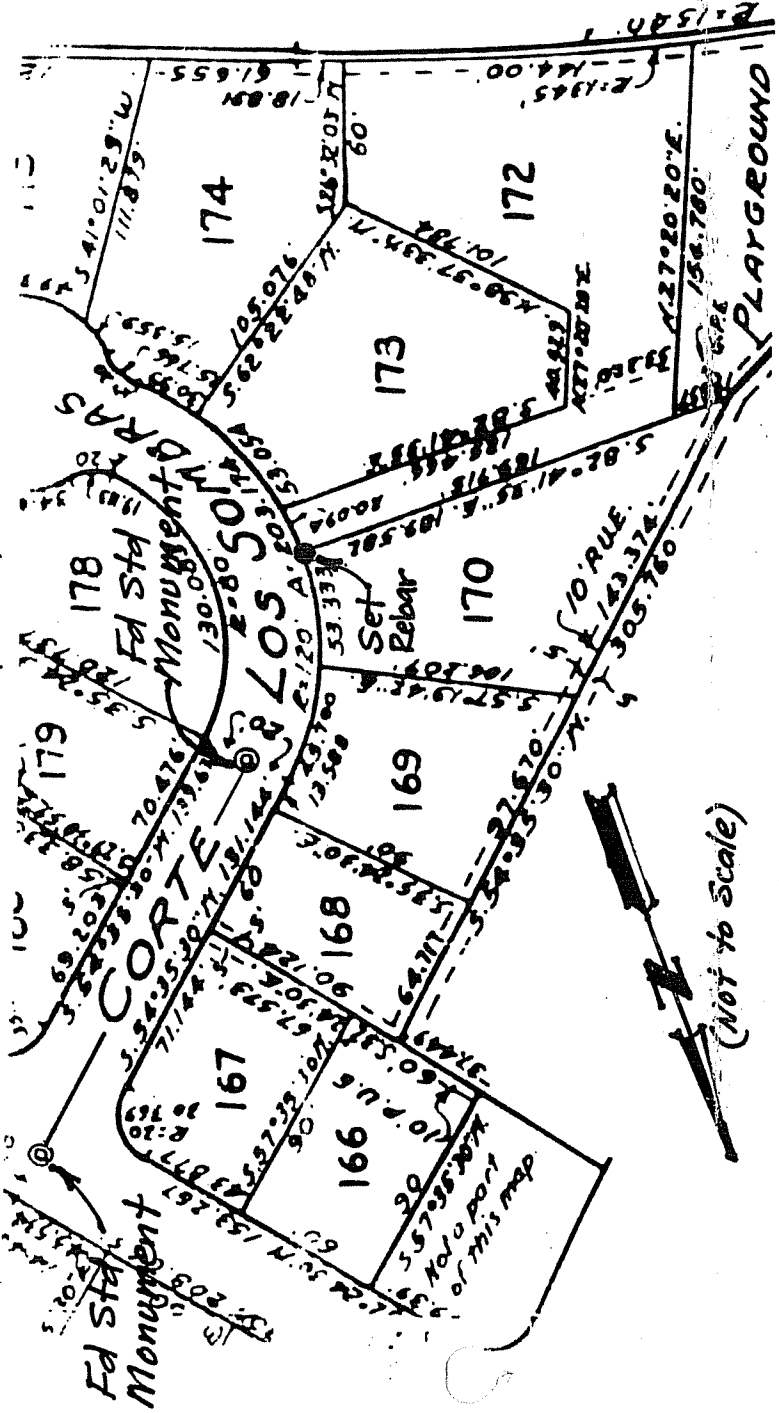
PHYSICAL DESCRIPTION OF CORNER FOUND; EVIDENCE AND METHOD USED TO IDENTIFY OR REESTABLISH
Used Subd. Monuments to reestablish corners.

PHYSICAL DESCRIPTION OF MONUMENTS REBUILT OR PERPETUATED
Set 1/2" Rebar and Plastic Cap Embossed LS 5290

CALIFORNIA COORDINATE SYSTEM ORDER: FIRST SECOND THIRD STATION _____
 STATIONS USED: NGS (USC & GS) STATE COUNTY OTHER EASTINGS (X) _____
 ZONE _____ ELEVATION _____ NORTHINGS (Y) _____

(Fold)

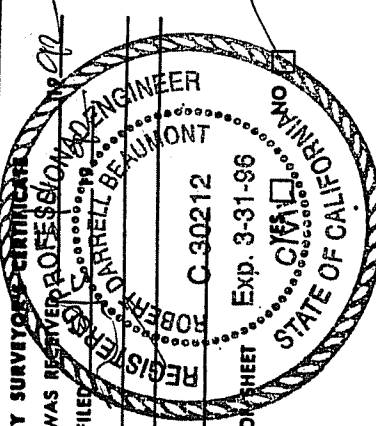
SKETCH: (include reference tie or witness points, remarks and topo of area)



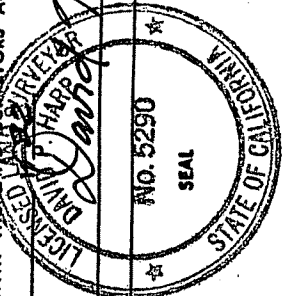
SURVEYOR'S CERTIFICATE
 THIS CORNER RECORD WAS PREPARED BY ME OR UNDER MY DIRECTION IN CONFORMANCE WITH THE SURVEYORS ACT ON April 29

SIGNED: [Signature]
 L.S. or R.C.E. No.: NO. 5290

exp 12/95



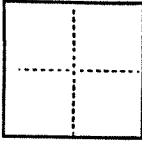
COUNTY SURVEYOR'S CERTIFICATE
 THE CORNER RECORD WAS REVIEWED PROFESSIONALLY AND EXAMINED AND FILED IN THE PUBLIC RECORDS BY:
 REGISTERED PROFESSIONAL ENGINEER
 ROBERT CARROLL BEAUMONT
 DOCUMENT No. C 30212
 STATEMENT ON BACK OF SHEET



CORNER RECORD

COUNTY OF Marin T. R. MERIDIAN CALIFORNIA
CORNER TYPE: GOVT. CORNER MEANDER RANCHO CONTROL OTHER Subd. Lot Corner

CORNER IDENTIFICATION — DATE OF VISIT 19



Marin Assessor's Parcel 70-181-07
Lot 172 of G R.M. 7

CORNER — LEFT AS FOUND FOUND AND TAGGED REESTABLISHED OBLITERATED CORNER RESULT Greenbrae

PHYSICAL DESCRIPTION OF CORNER FOUND; EVIDENCE AND METHOD USED TO IDENTIFY OR REESTABLISH

Used Subd. Monuments to reestablish corners.

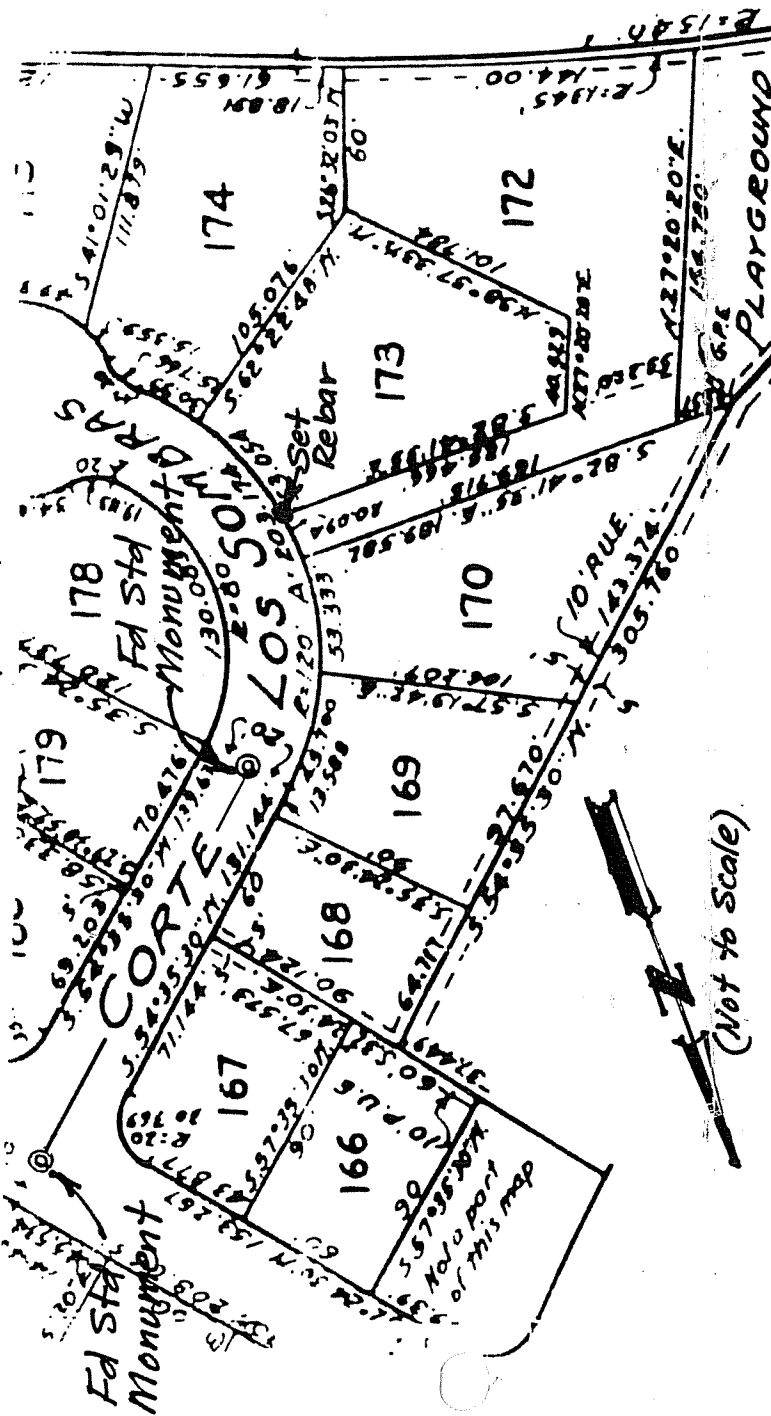
PHYSICAL DESCRIPTION OF MONUMENTS REBUILT OR PERPETUATED

Set 1/2" Rebar and Plastic Cap Embossed LS 5290

CALIFORNIA COORDINATE SYSTEM ORDER: FIRST SECOND THIRD
STATIONS USED: NGS (USC & GS) COUNTY OTHER STATION _____ EASTINGS (X) _____
ZONE _____ ELEVATION _____ NORTHINGS (Y) _____

(Fold)

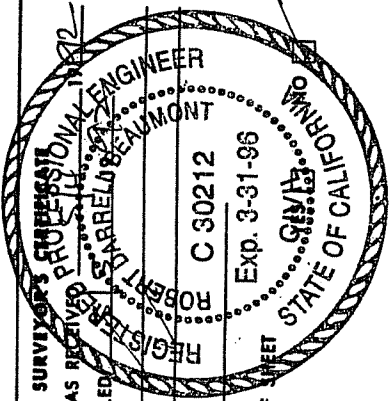
SKETCH: (Include reference tie or witness points, remarks and topo of area)



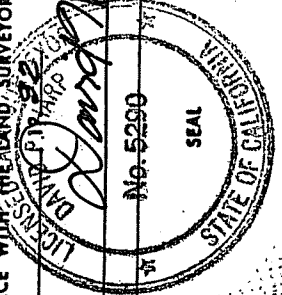
SURVEYOR'S CERTIFICATE

THIS CORNER RECORD WAS PREPARED BY ME OR UNDER MY DIRECTION IN CONFORMANCE WITH THE LAND SURVEYORS ACT ON April 29

SIGNED: [Signature]
L.S. or R.C.E. No: No. 5290
exp 12/95

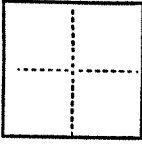


COUNTY SURVEYOR'S PROFESSIONAL SEAL
THE CORNER RECORD WAS REVIEWED AND EXAMINED AND FILED IN THE PUBLIC RECORDS OF THE COUNTY OF MARIN BY: ROBERT J. BEALMON
TITLE: REGISTERED PROFESSIONAL ENGINEER
DOCUMENT No. C 30212
STATEMENT ON BACK OF SHEET



CORNER RECORD

COUNTY OF Marin T. R. MERIDIAN CALIFORNIA
 CORNER TYPE: GOV'T. CORNER MEANDER RANCHO CONTROL OTHER Subd. Lot Corner
 CORNER IDENTIFICATION — DATE OF VISIT 19



Marin Assessor's Parcel 70-181-07
Lot 172 of G R.M. 7

CORNER — LEFT AS FOUND FOUND AND TAGGED REESTABLISHED OBLITERATED CORNER RESULT Greenbrae

PHYSICAL DESCRIPTION OF CORNER FOUND; EVIDENCE AND METHOD USED TO IDENTIFY OR REESTABLISH

Used Subd. Monuments to reestablish corners.

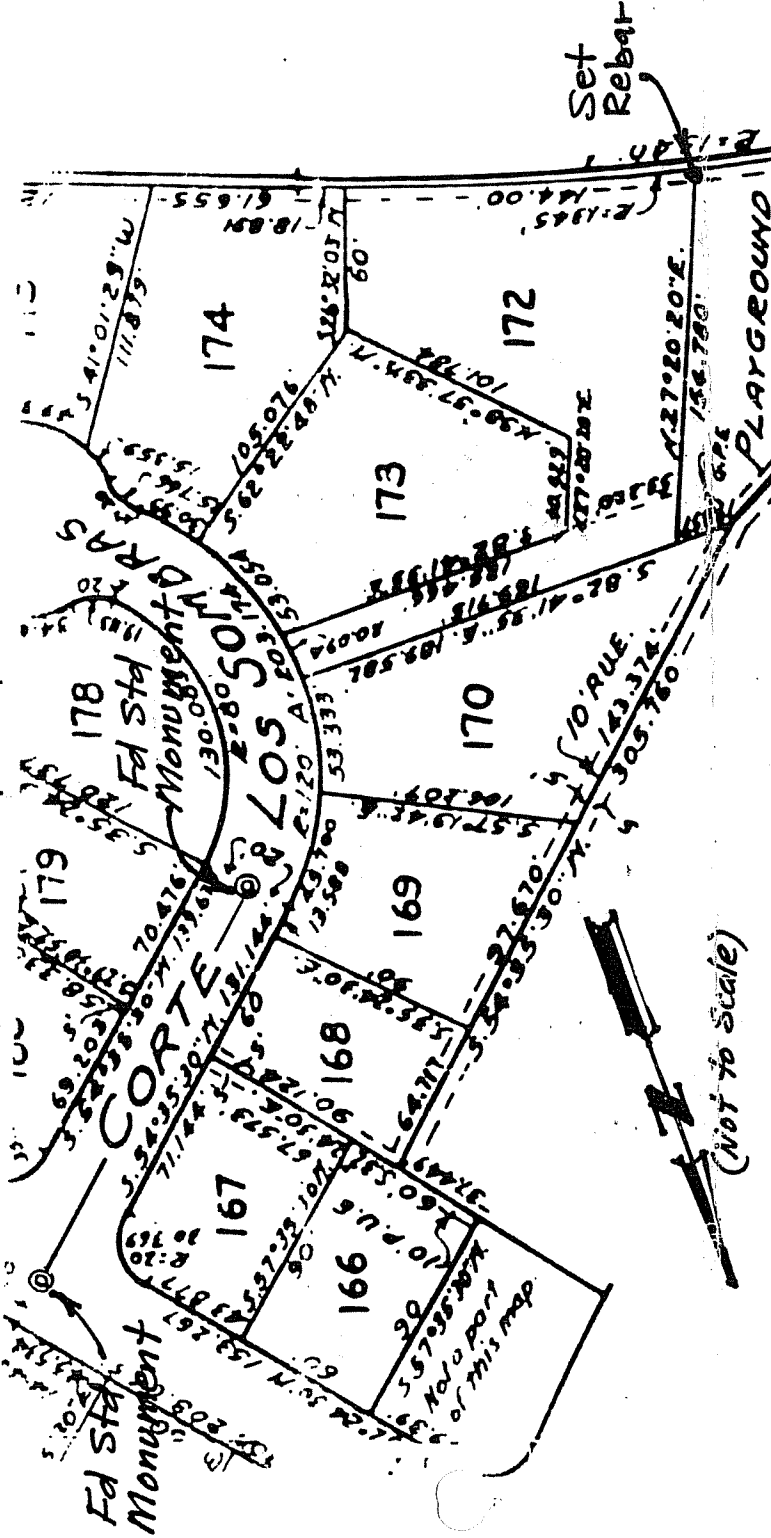
PHYSICAL DESCRIPTION OF MONUMENTS RESULT OR PERPETUATED

Set 1/2" Rebar and Plastic Cap Embossed LS 5290

CALIFORNIA COORDINATE SYSTEM ORDER: FIRST SECOND THIRD
 STATIONS USED: NGS (USC & GS) STATE COUNTY OTHER STATION
 ZONE _____ ELEVATION _____ NORTHINGS (Y) _____ EASTINGS (X) _____

(Fold)

SKETCH: (Include reference tie or witness points, remarks and topo of area)



SURVEYOR'S CERTIFICATE

THIS CORNER RECORD WAS PREPARED BY ME OR UNDER MY DIRECTION IN CONFORMANCE WITH THE LAND-SURVEYORS ACT ON April 29

SIGNED: David H. Beumont

L.S. or R.C.E. No.: No. 5290
 exp 12/95

