

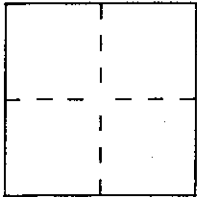
# CORNER RECORD

Document Number A.P.N. 070-171-14

City of VICINITY OF GREENBRAE

County of MARIN, California

Brief Legal Description LOT 260 PER G.R.M. 44



### CORNER TYPE

Government Corner  Control   
Meander  Property   
Rancho  Other   
Date of Survey MARCH 23, 2000

### COORDINATES (Optional)

N. \_\_\_\_\_  
E. \_\_\_\_\_  
Zone \_\_\_\_\_ Datum \_\_\_\_\_  
Elev. \_\_\_\_\_

Corner — Left as found  Found and tagged  Established  Reestablished  Rebuilt

Identification and type of corner found: Evidence used to identify or procedure used to establish or reestablish the corner:

= SEE OVER =

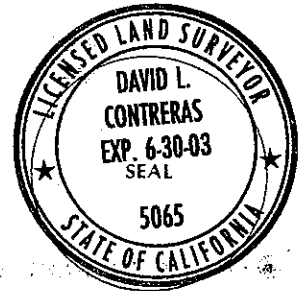
A description of the physical condition of the monument as found and as set or reset:

= SEE OVER =

### SURVEYOR'S STATEMENT

This Corner Record was prepared by me or under my direction in conformance with the Land Surveyors' Act on AUGUST 10 2000

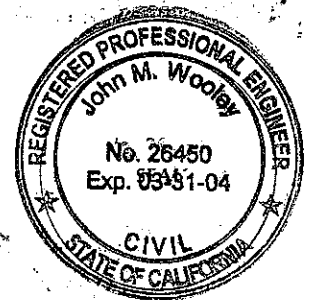
Signed David Contreras (L.S.) or R.C.E. Number 5065



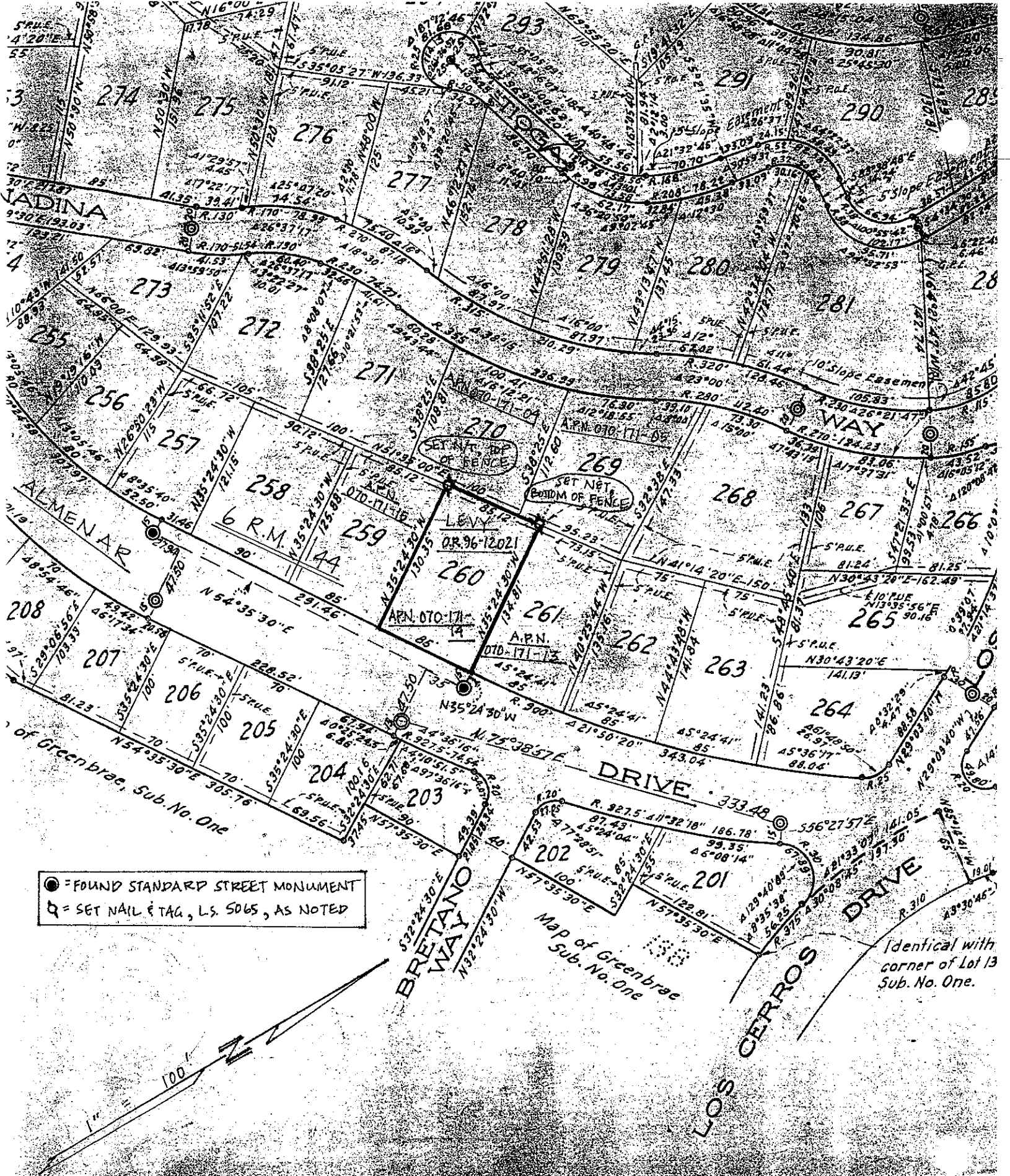
### COUNTY SURVEYOR'S STATEMENT

This Corner Record was received AUGUST 17, 2000 and examined and filed AUGUST 18, 2000

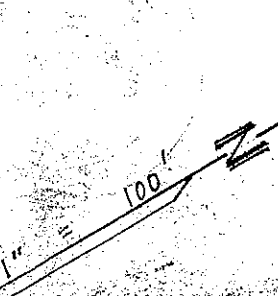
Signed John M. Woolley Title DEPUTY



County Surveyor's Comment \_\_\_\_\_



● = FOUND STANDARD STREET MONUMENT  
 □ = SET NAIL & TAG, L.S. SOBS, AS NOTED



Map of Greenbrae  
 Sub. No. One

Identical with  
 corner of Lot 13  
 Sub. No. One.