

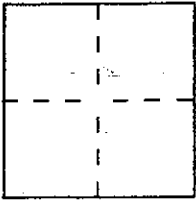
CORNER RECORD

Document Number AP# 070-151-24

City of GREENBRAE

County of MAKIN, California

Brief Legal Description LOT 248, BOOK 6 OF SUBDIVISION MAPS, PAGE 44, SHEET NO. 2 OF GREENBRAE



CORNER TYPE

COORDINATES (Optional)

Government Corner Control
 Meander Property
 Rancho Other
 Date of Survey JAN. 28, 1996

N. _____
 E. _____
 Zone _____ Datum _____
 Elev. _____

Corner — Left as found Found and tagged Established Reestablished Rebuilt

Identification and type of corner found: Evidence used to identify or procedure used to establish or reestablish the corner:

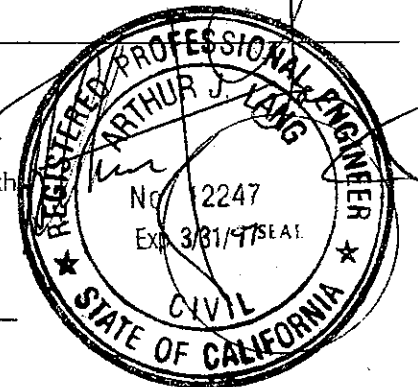
FOUND STREET MONUMENT AS DESCRIBED ON MA SHEET NO. 2 OF GREENBRAE (6 RM 44) 0.4' BELOW PAVEMENT & STEEL WASHER AT SOUTHERN MONUMENT LOCATION. SET ALL FOUR CORNERS BASED ON RECORD BEARINGS & DISTANCES.

A description of the physical condition of the monument as found and as set or reset: SEE ABOVE & SKETCH, PAGE 2 OF 2

SURVEYOR'S STATEMENT

This Corner Record was prepared by me or under my direction in conformance with the Land Surveyors' Act of FEB 23 1996.

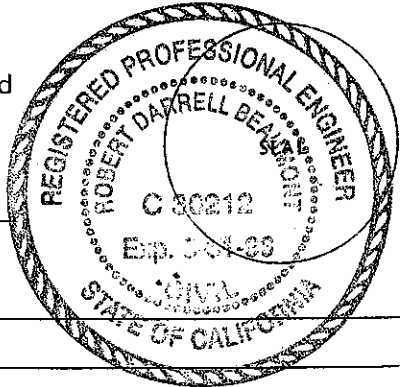
Signed [Signature] L.S. or (R.C.E) Number 12247



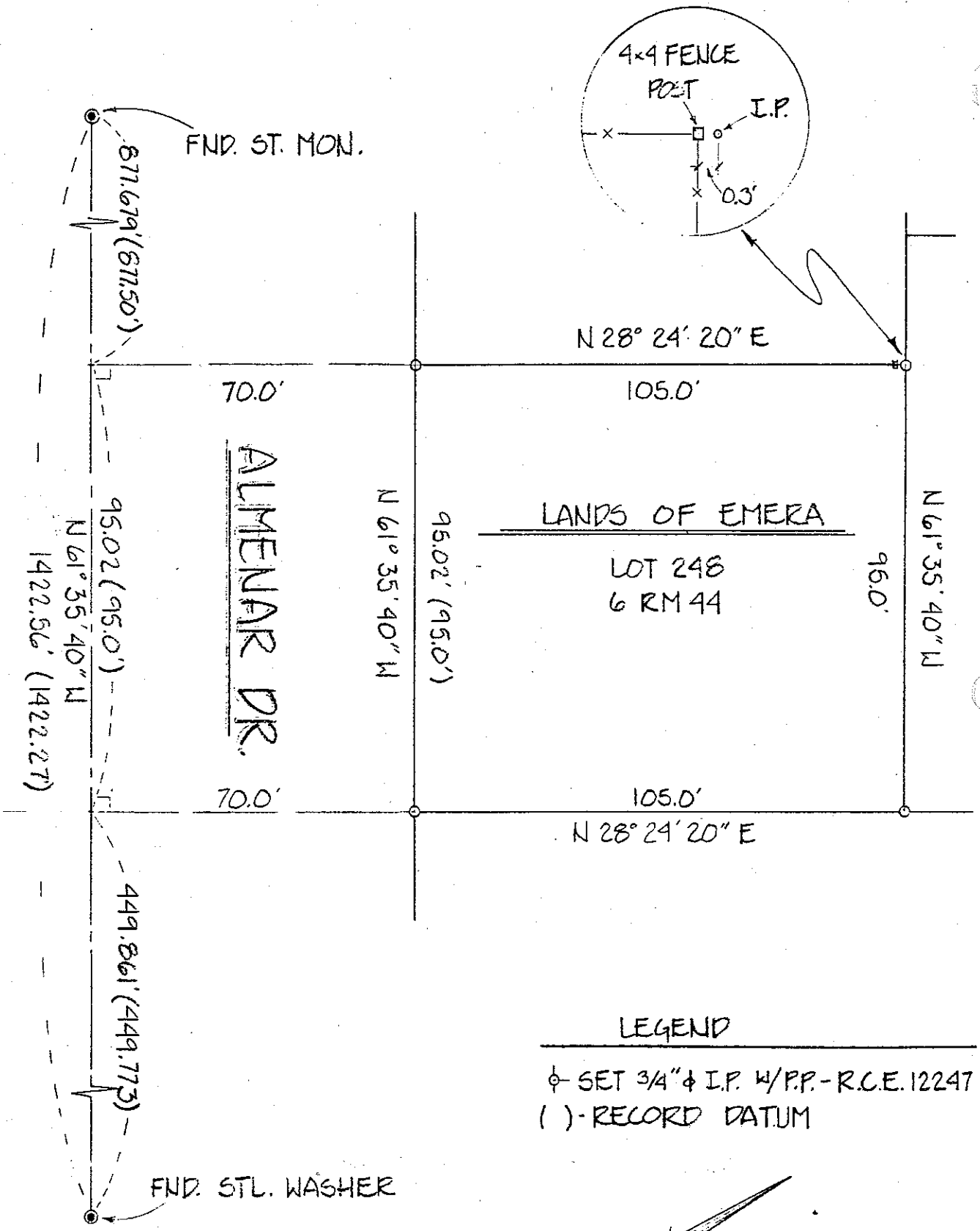
COUNTY SURVEYOR'S STATEMENT

This Corner Record was received February 29 1996 and examined and filed 3-4 1996.

Signed [Signature] Title DCS



County Surveyor's Comment _____



LEGEND
 ⊕ SET 3/4" ⊕ I.P. W/P.P. - R.C.E. 12247
 () - RECORD DATUM

