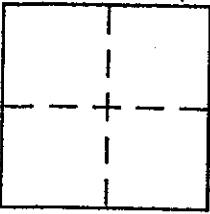


CORNER RECORD

APN Document Number 070-151-05
County of MARIN, California

City of GREEN BRAE

Brief Legal Description LOT 306, MAP OF GREENBRAE, SUB'D TWO (6 RM 44)



CORNER TYPE
Government Corner Control
Meander Property
Rancho Other
Date of Survey _____

COORDINATES (Optional)
N. _____
E. _____
Zone NAD27 NAD83
NAD83 Epoch _____
Elev. _____
Vert. Datum: NGVD29 NAVD88
Meas. Units: Metric Imperial

Corner -- Left as found Found and tagged Established Reestablished Rebuilt

Identification and type of corner found: Evidence used to identify or procedure used to establish or reestablish the corner:
FOUND STREET MONUMENTS PER RECORD MAP (6 RM 44)

A description of the physical condition of the monument as found and as set or reset: SET 3/4" I.P. & PLASTIC PLUG, RCE 30465; SEE PAGE 2

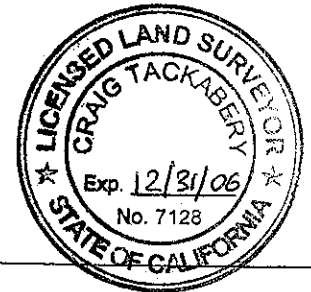
SURVEYOR'S STATEMENT

This Corner Record was prepared by me or under my direction in conformance with the Land Surveyor's Act on MAY 10 2004
Signed [Signature] P.L.S. or R.C.E. No. 30465

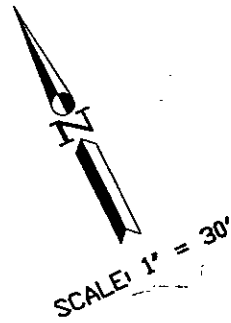


COUNTY SURVEYOR'S STATEMENT

This Corner Record was received JUNE 21, 2004
and examined and filed JULY 15, 2004
Signed [Signature] P.L.S. or R.C.E. No. 7128
Title COUNTY SURVEYOR



County Surveyor's Comment _____



LOT 305
6 RM 44

LOT 300
6 RM 4

LOT 299
6 RM 44

LOT 298
6 RM 44

LOT 306
6 RM 44

LOT 307
6 RM 44

LOT 297
6 RM 44

LOT 308
6 RM 44

C O R T E B E L B O A (4 0 ' R / W)

(Tie)
15'

N26°34'05"E
Basis of Bearing N26°34'05"E 133.22'

(Tie)
15'

S77°55'43"E
158.48'

Set IP 1.0'
Extended from
Property Corner

138.00'(t)

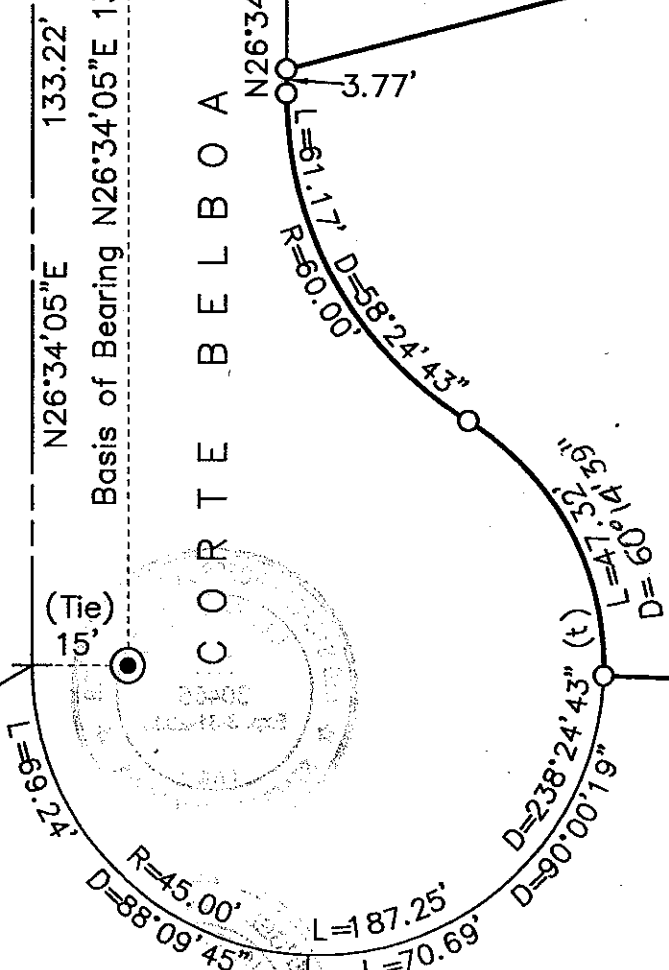
Lands of Fogarty
APN 070-151-05

137.00'

N32°53'10"E

88.32'
S61°35'40"E

10' Public Utility Easement Per 6 RM 44



LEGEND

- FOUND STD. STREET MONUMENT PER - 6 RM 44
- SET 3/4" I.P. & PLASTIC PLUG, RCE 30465
- (t) DENOTES TOTAL

Note: All distances are in feet and decimals thereof.

SHEET	1	OF	1
SCALE:	1" = 30'	DESIGN:	TH
DATE:	5-6-04	DRAWN:	TH
FILE:	2004-069	CHECKED:	J.L.H

J.L. ENGINEERING
 CIVIL ENGINEERS-LAND SURVEYORS
 1539 4th ST., SAN RAFAEL, CA. 94901 (415) 457-6647

Corner Record
 Lands of Fogarty - 125 Corte Balboa
 APN 070-151-05, Greenbrae, Marin County, CA