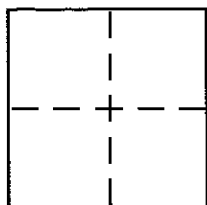


CORNER RECORD

Document Number APN. 070-141-13

City of KENTFIELD (UNINCORPORATED AREA) County of MARIN, California

Brief Legal Description LOT 405, "GREENBRAE SUB. THREE, 6 RM 72 ~ 20 MANOR DR.



CORNER TYPE

Government Corner Control
Meander Property
Rancho Other
Date of Survey 1/6/04

COORDINATES (Optional)

N. _____
E. _____
Zone _____ NAD27 NAD83
NAD83 Epoch _____
Elev. _____
Vert. Datum: NGVD29 NAVD88
Meas. Units: Metric Imperial

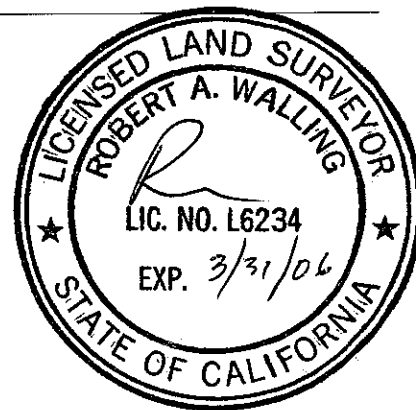
Corner - Left as found Found and tagged Established Reestablished Rebuilt

Identification and type of corner found: Evidence used to identify or procedure used to establish or reestablish the corner:
FOUND SUBDIVISION STREET MONUMENTS IN RECORD LOCATION PER 6 RM 72, M.C.R. USED FIELD SURVEY TO ESTABLISH PROPERTY CORNERS IN RECORD POSITIONS.

A description of the physical condition of the monument as found and as set or reset:
FOUND MONUMENTS APPEARED UNDISTURBED.

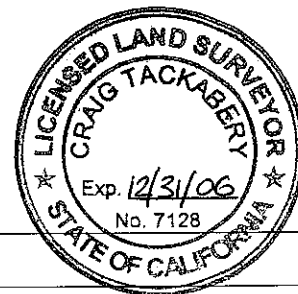
SURVEYOR'S STATEMENT

This Corner Record was prepared by me or under my direction in conformance with the Land Surveyor's Act on JANUARY 6 2004.
Signed [Signature] P.L.S or R.C.E. No. PLS 6234

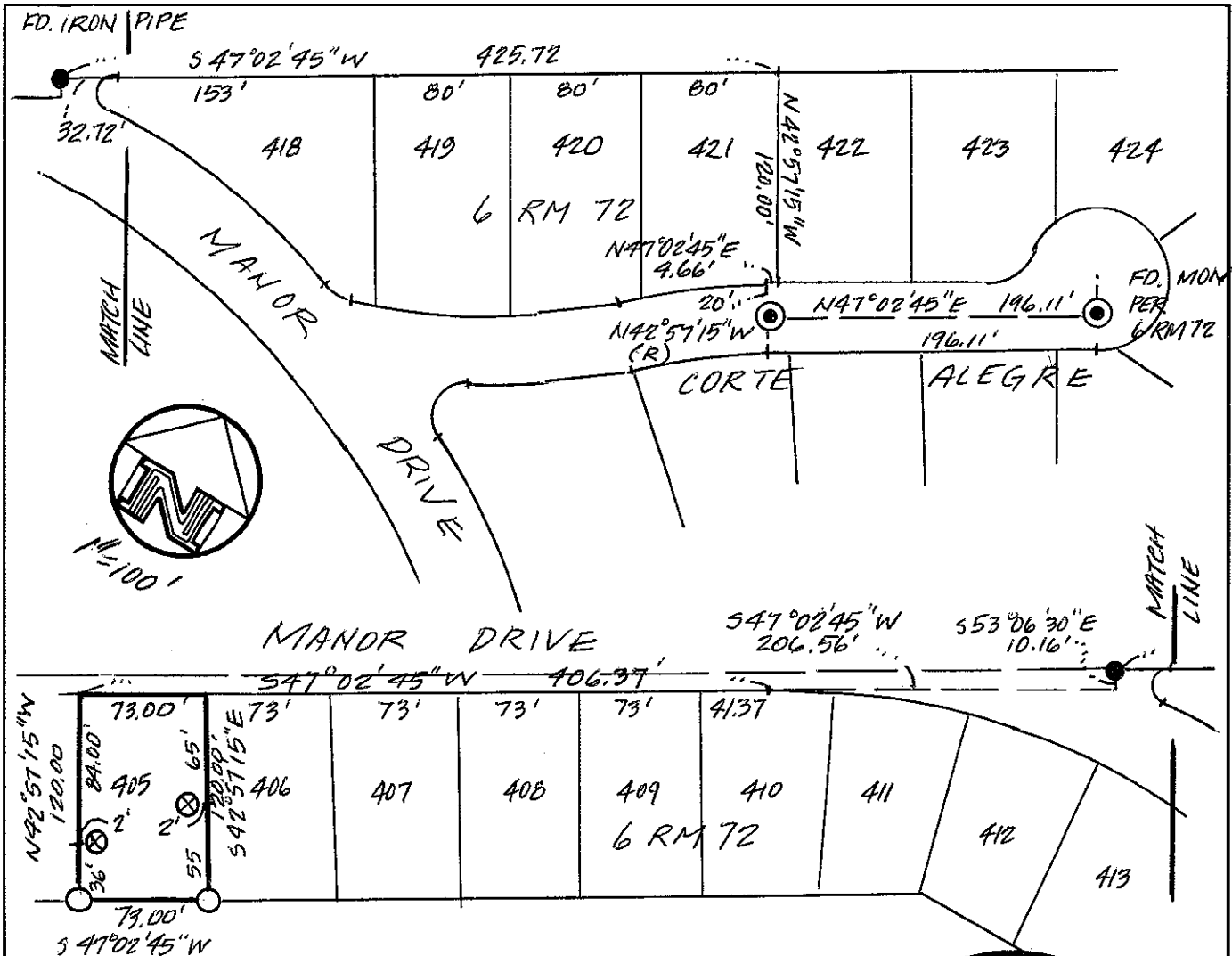


COUNTY SURVEYOR'S STATEMENT

This Corner Record was received JANUARY 26, 2004 and examined and filed FEBRUARY 6, 2004.
Signed [Signature] P.L.S or R.C.E. No. 7128
Title COUNTY SURVEYOR

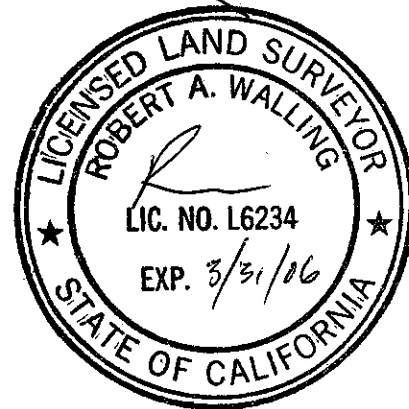


County Surveyor's Comment _____

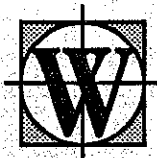


LEGEND

- FOUND IRON PIPE PER 6 RM 72
- ⊙ FOUND STD. STREET MONUMENT PER 6 RM 72
- SET 1/2" PIN WITH "PLS6234"
- ⊗ SET 1/2" PIN, NO CAP - OFFSET TO PROP. LINE



SURVEY PLAT
 LANDS OF ROYO
 LOT 405, GREENBRAE SUB. NO. 3, 6 RM 72
 KENTFIELD, MARIN COUNTY, CALIFORNIA
 APN. 070-141-13



BOB WALLING TECHNICAL SERVICES
 P.O. Box 1346 • Glen Ellen, CA 95442
 (707) 938-1593 (415) 382-1593

JN.103-43

1/6/04