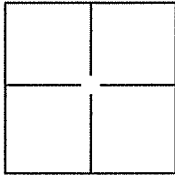


CORNER RECORD

Document Number APN-70-132-02
 City of GREENBRAE County of MARIN, California
 Brief Legal Description LOT 753, BK 7 OF MAPS, P. 71



CORNER TYPE

Government Corner Control
 Meander Property
 Rancho Other

Date of Survey 2/8/2010

COORDINATES(Optional)

N. _____
 E. _____
 Zone _____ NAD27 NAD83
 NAD83 Epoch _____
 Elev. _____
 Vert. Datum: NGVD29 NADV88
 Meas. Units: Metric Imperial

Corner - Left as found Found and tagged Established Reestablished Rebuilt

Identification and type of corner found: Evidence used to identify or procedure used to establish or reestablish the corner:

NOTHING FOUND. USED MONUMENTS SHOWN ON
7 MAPS 71 TO ESTABLISH PROPERTY CORNERS.

A description of the physical condition of the monument as found and as set or reset:

FOUND IRON
PIPE MONUMENTS IN WELLS TAGGED RCE 1812
IN GOOD CONDITION. SET 3/4" IRON PIPES WITH
PLASTIC CAPS LS 5530, AND NAILS WITH BRASS
TAGS IN CONCRETE LS 5530

SURVEYOR'S STATEMENT

This Corner Record was prepared by me or under my direction in conformance with

the Land Surveyor's Act on FEBRUARY 22, 2010.

Signed Paul O. Webb P.L.S. or R.C.E. No.: PLS 5530



COUNTY SURVEYOR'S STATEMENT

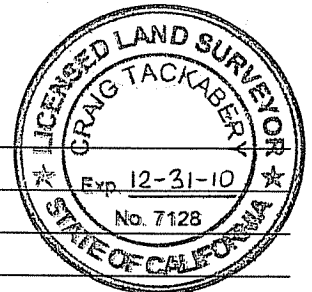
This Corner Record was received MARCH 5, 2010 and examined

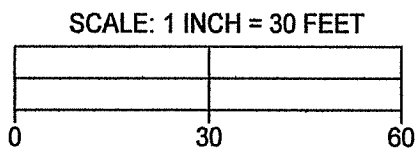
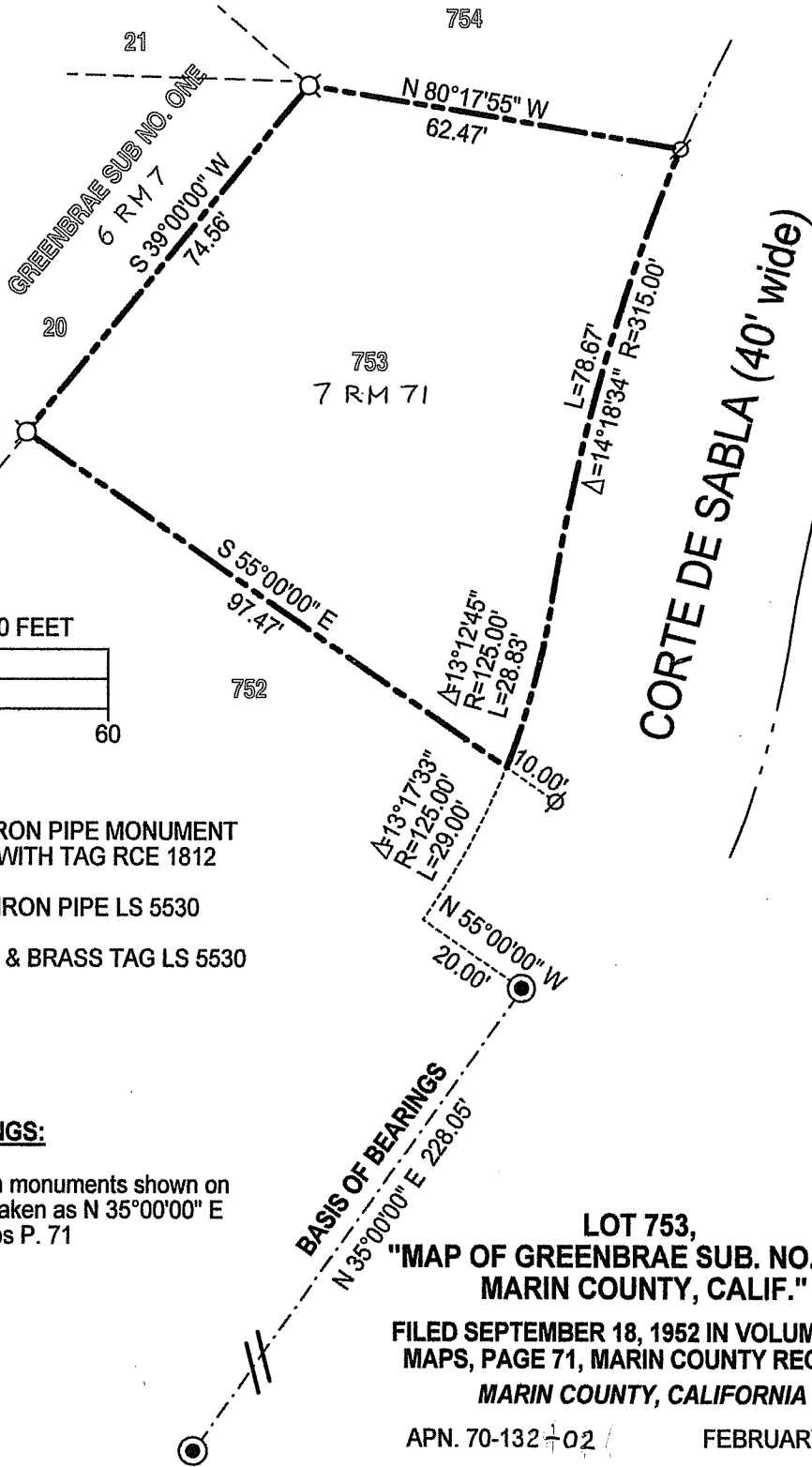
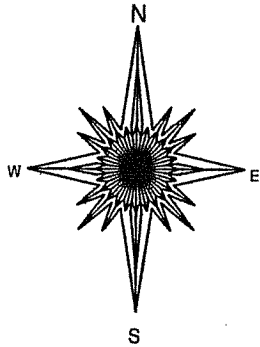
and filed MARCH 24, 2010

Signed [Signature] P.L.S. or R.C.E. No.: 7128

Title COUNTY SURVEYOR

County Surveyor's Comment _____





- LEGEND:**
- FOUND IRON PIPE MONUMENT IN WELL WITH TAG RCE 1812
 - ⊗ SET 3/4" IRON PIPE LS 5530
 - ⊙ SET NAIL & BRASS TAG LS 5530

BASIS OF BEARINGS:
 The line between monuments shown on Corte De Sabla taken as N 35°00'00" E per Vol. 7 of Maps P. 71

**LOT 753,
 "MAP OF GREENBRAE SUB. NO. FIVE,
 MARIN COUNTY, CALIF."**

**FILED SEPTEMBER 18, 1952 IN VOLUME 7 OF
 MAPS, PAGE 71, MARIN COUNTY RECORDS
 MARIN COUNTY, CALIFORNIA**

APN. 70-132-02 FEBRUARY, 2010