

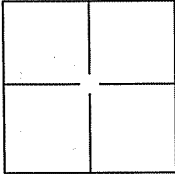
# CORNER RECORD

Document Number A.P.N. 070-131-06

City of Greenbrae

County of Marin, California

Brief Legal Description Lot 759, Map of Greenbrae, 245 Bretano Way, 7 RM 64.



### CORNER TYPE

Government Corner  Control   
 Meander  Property   
 Rancho  Other

Date of Survey 10 March 2008

### COORDINATES(Optional)

N. \_\_\_\_\_  
 E. \_\_\_\_\_  
 Zone \_\_\_\_\_ NAD27  NAD83   
 NAD83 Epoch \_\_\_\_\_  
 Elev. \_\_\_\_\_  
 Vert. Datum: NGVD29  NADV88   
 Meas. Units: Metric  Imperial

Corner - Left as found  Found and tagged  Established  Reestablished  Rebuilt

Identification and type of corner found: Evidence used to identify or procedure used to establish or reestablish the corner:  
Found Standard Street Monuments (2) per 7 RM 64.

A description of the physical condition of the monument as found and as set or reset:  
Set 3/4" Iron Pipes at SE corner and on easterly line (2), Brass Nail at top of fence on easterly line (1) and 80D Nail at toe of fence on easterly line (1), See Exhibit "A".

### SURVEYOR'S STATEMENT

This Corner Record was prepared by me or under my direction in conformance with the Land Surveyor's Act on MARCH 13, 2008.

Signed [Signature] P.L.S. or R.C.E. No.: 18221



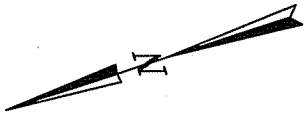
### COUNTY SURVEYOR'S STATEMENT

This Corner Record was received MARCH 17, 2008 and examined and filed APRIL 24, 2008.

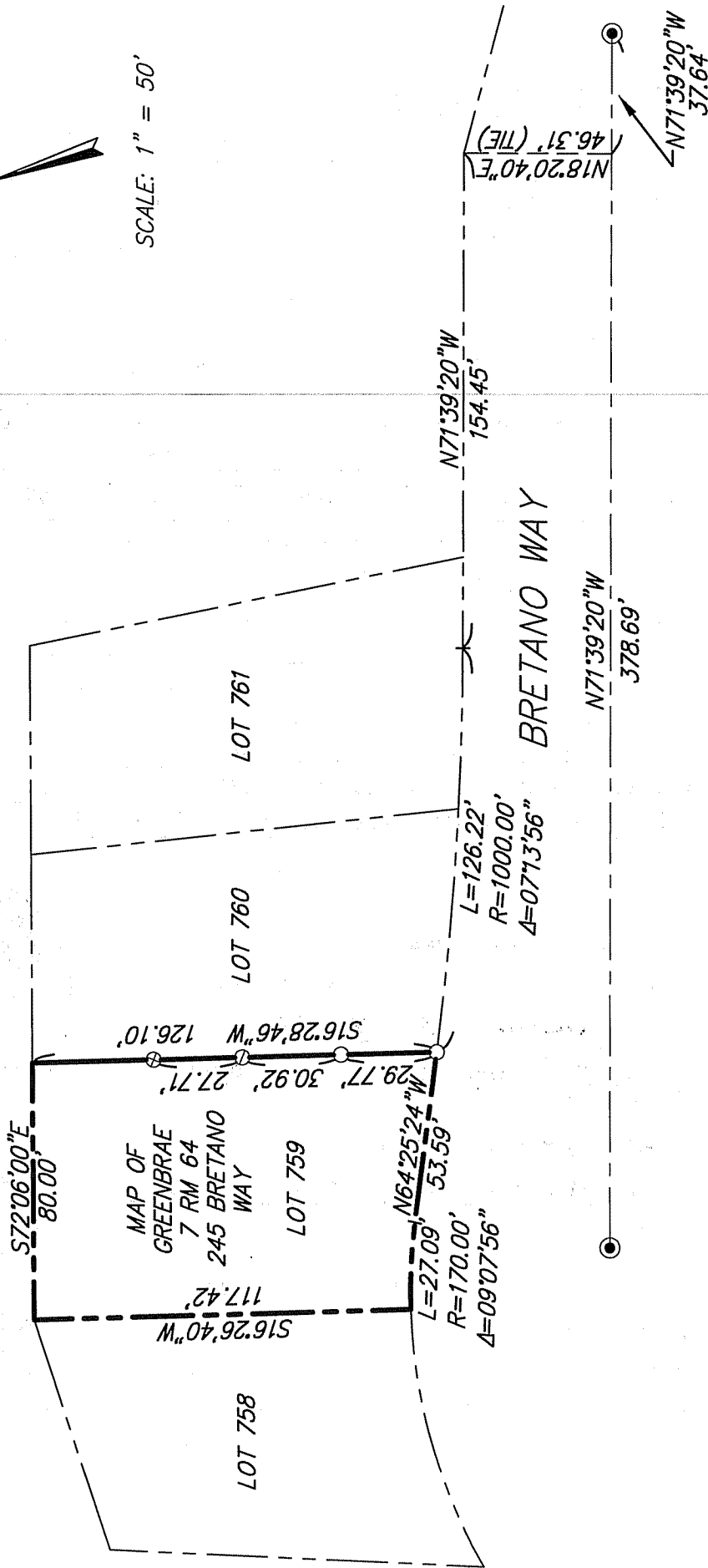
Signed [Signature] P.L.S. or R.C.E. No.: 7128  
 Title COUNTY SURVEYOR

County Surveyor's Comment \_\_\_\_\_





SCALE: 1" = 50'



**LEGEND**

- SET 3/4" IRON PIPE & YELLOW CAP "R.C.E. 18221"
- ⊗ SET 80D NAIL AT TOE OF FENCE - POINT ON PROPERTY LINE
- SET BRASS NAIL AT TOP OF FENCE - POINT ON PROPERTY LINE
- FOUND STANDARD STREET MONUMENT

**NOTE:**  
 ALL DIMENSIONS AND BEARINGS  
 SHOWN HEREON ARE PER 7 R.M. 64.

# EXHIBIT "A"



**ILS ASSOCIATES, INC.®**  
 CIVIL ENGINEERING AND LAND SURVEYING

70 GALLI DRIVE, SUITE A NOVATO, CA 94940-5777 (415)853-9200 FAX (415)853-2763

A.P.N. 070-131-06

DATE: 03/12/2008  
 FILE: 8238CR.dwg  
 PAGE 2 of 2