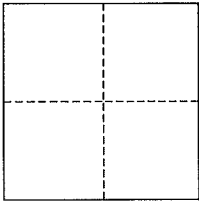


CORNER RECORD

City of San Rafael

Document Number AP# 070-121-14
County of Marin, California

Brief Legal Description Lot 84, 6 RM 7



CORNER TYPE

Government Corner Control
Meander Property
Rancho Other
Date of Survey _____

COORDINATES (Optional)

N. _____
E. _____
Zone _____ NAD27 NAD83
NAD83 Epoch _____
Elev. _____
Vert. Datum: NGVD29 NAVD88
Meas. Units: Metric Imperial

Corner- Left as found Found and tagged Established Reestablished Rebuilt

Identification and type of corner found: Evidence used to identify or procedure used to establish or reestablish the corner:
Found original Standard Street Mons, per 6 RM 7.

A description of the physical condition of the monument as found and as set or reset: All Property Corners and Property Line points were set as shown hereon, per 6 RM 7.

SURVEYOR'S STATEMENT

This corner Record was prepared by me or under my direction in conformance with the Land Surveyor's Act on September 16, 2013

Signed [Signature] P.L.S. or R.C.E. No. 30465

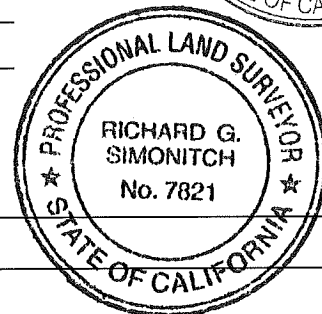
COUNTY SURVEYOR'S STATEMENT

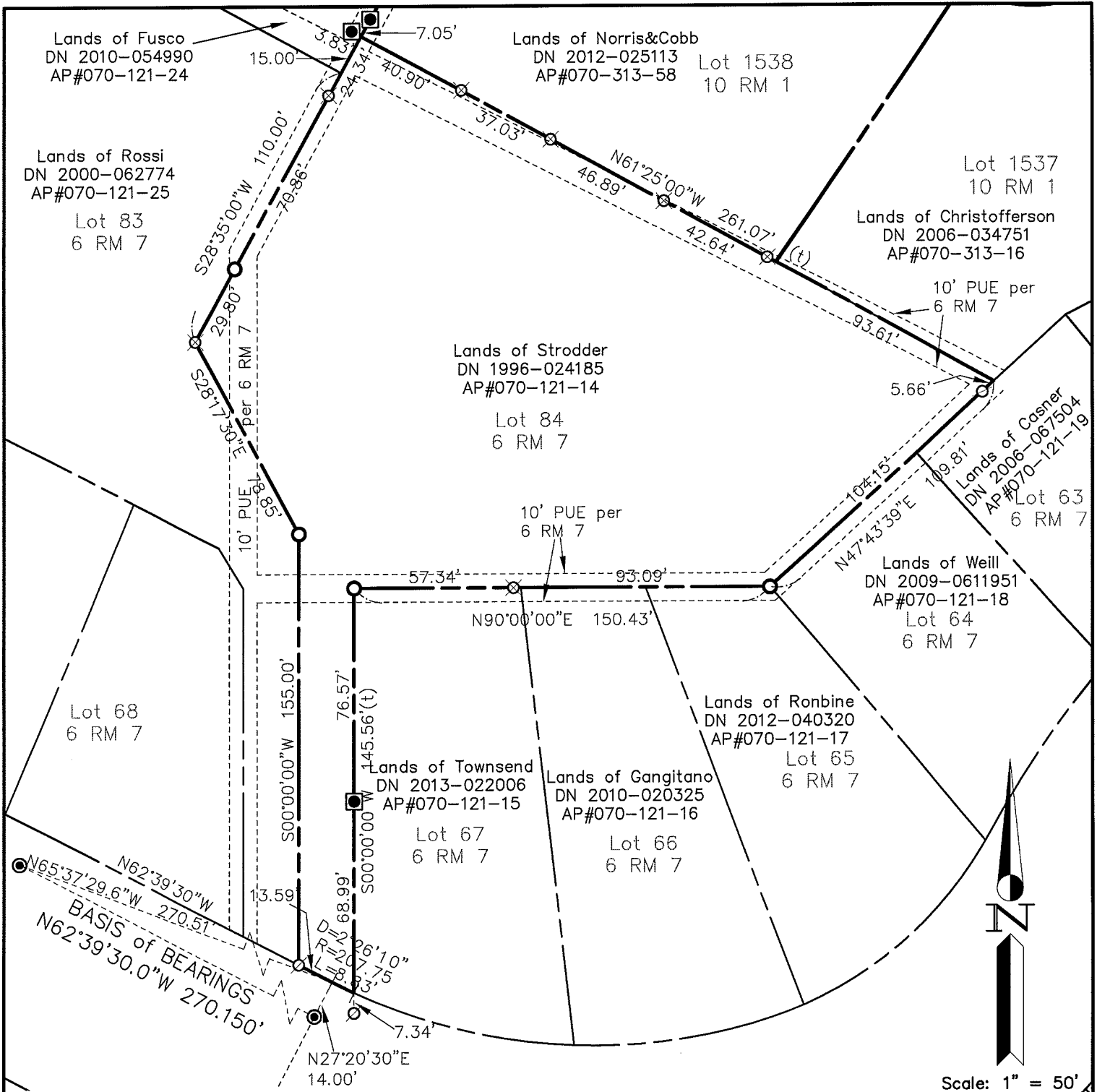
This Corner Record was received SEPTEMBER 20, 2013
and examined and filed _____

Signed _____ P.L.S. or R.C.E. No. 7821

Title DEPUTY CO. SURVEYOR

County Surveyor's Comment _____





LEGEND

- FOUND STREET MONUMENT
- SET IP & PLUG, RCE 30465
- ⊗ SET REBAR & CAP, RCE 30465
- ⊘ SET NAIL & TAG, RCE 30465
- SET 2x2 HUB & TACK
- (t) DENOTES TOTAL

Note: All distances are in feet and decimals thereof.

BRETANO WAY
(R/W Varies)

SHEET	1	OF	1
SCALE:	1" = 50'	DESIGN:	E.D.L.
DATE:	Aug 2013	DRAWN:	E.D.L.
FILE:	2011-072	CHECKED:	J.L.H

J.L. ENGINEERING
 CIVIL ENGINEERS-LAND SURVEYORS
 1539 4th ST., SAN RAFAEL, CA. 94901 (415) 457-6647

Corner Record
 Lands of Strodder - 113 Bretano Way
 APN 070-121-14, Greenbrae, Marin County, CA