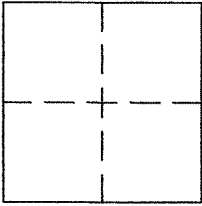


CORNER RECORD
GREENBRAE

Document Number APN 070-112-13
County of MARIN, California

Brief Legal Description LOT 197, 10 RM 78



CORNER TYPE
Government Corner Control
Meander Property
Rancho Other
Date of Survey 10-26-10

COORDINATES (Optional)
N. 37.95004
E. 122.52437
Zone CA 2 NAD27 NAD83
NAD83 Epoch _____
Elev. _____
Vert. Datum: NGVD29 NAVD88
Meas. Units: Metric Imperial

Corner - Left as found Found and tagged Established Reestablished Rebuilt

Identification and type of corner found: Evidence used to identify or procedure used to establish or reestablish the corner:
FOUND STANDARD STREET MONUMENTS AS SHOWN ON 6 RM 7 AND ON REVERSE

A description of the physical condition of the monument as found and as set or reset:
SET REBARS W/CAP, PLS 5296 , AS SHOWN ON REVERSE

NOTE: GPS SHOT TAKEN AT BACK OF ROLLED CURB ON EXTENSION OF S'LY PROP. LINE

SURVEYOR'S STATEMENT

This Corner record was prepared by me or under my direction in conformance with
the Land Surveyor's Act on OCTOBER 26, 2010

Signed [Signature] P.L.S. or R.C.E. No. PLS 5296



COUNTY SURVEYOR'S STATEMENT

This Corner Record was received NOVEMBER 12, 2010

and examined and filed DECEMBER 6, 2010

Signed [Signature] P.L.S. or R.C.E. No. 7128

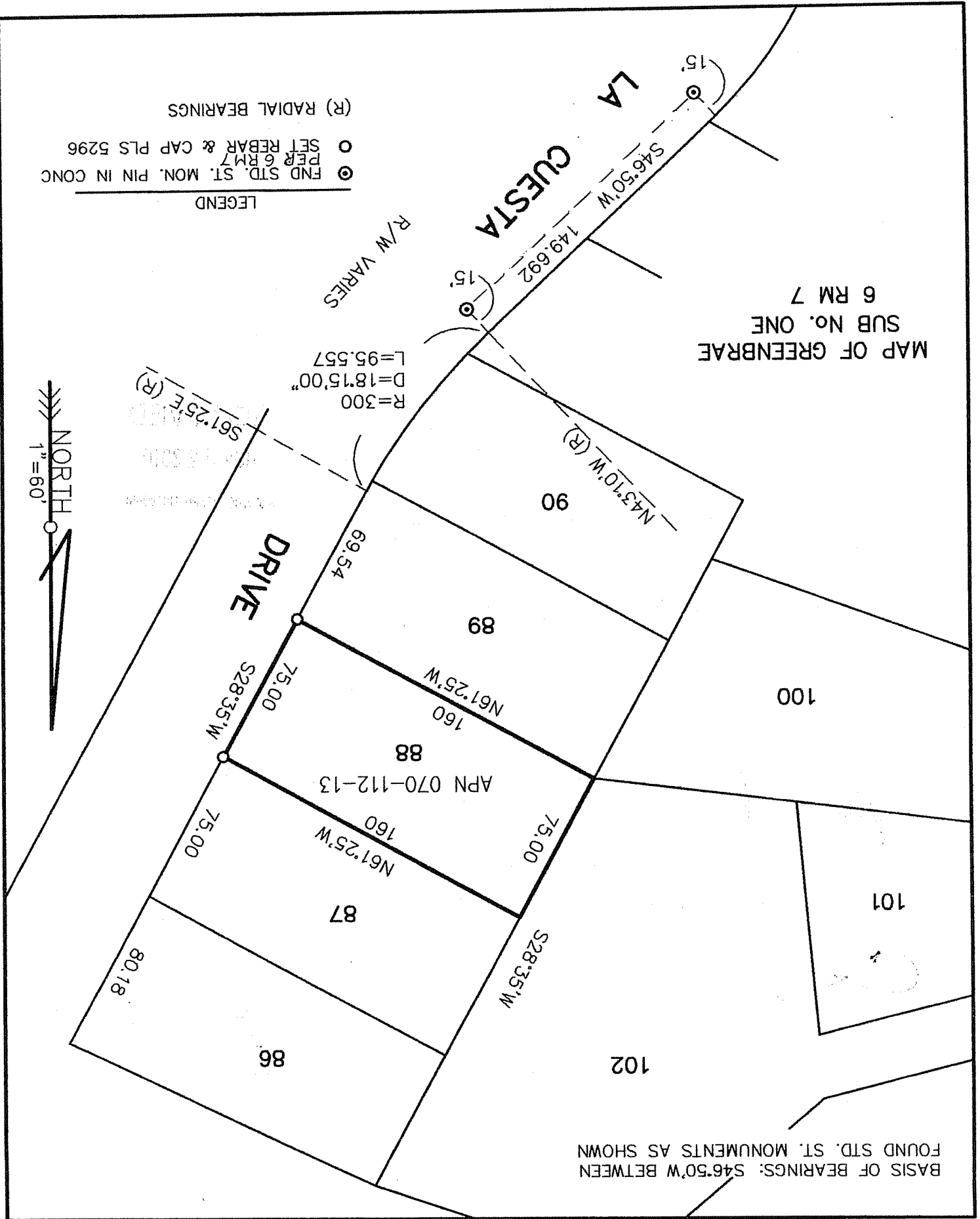
Title COUNTY SURVEYOR



County Surveyor's Comment _____

MAP OF GREENBRAE
SUB NO. ONE
6 RM 7

BASIS OF BEARINGS: S46.50'W BETWEEN
FOUND STD. ST. MONUMENTS AS SHOWN



- LEGEND
- ⊙ FND STD. ST. MON. PIN IN CONC
 - ⊙ PER 6 RM 7 SET REBAR & CAP PLS 5296
 - (R) RADIAL BEARINGS

