

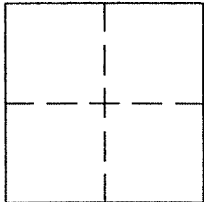
CORNER RECORD

Document Number 070-103-07

City of GREENBRAE

County of MARIN, California

Brief Legal Description LOT 103, 6 RM 11, AMENDED MAP OF A PTN. OF GREENBRAE SUB. No. ONE



CORNER TYPE

Government Corner [] Control []
Meander [] Property [x]
Rancho [] Other []
Date of Survey FEBRUARY 14, 2012

COORDINATES (Optional)

N.
E.
Zone NAD27 [] NAD83 []
NAD83 Epoch
Elev.
Vert. Datum: NGVD29 [] NAVD88 []
Meas. Units: Metric [] Imperial []

Corner - Left as found [] Found and tagged [] Established [x] Reestablished [] Rebuilt []

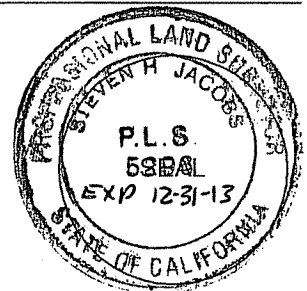
Identification and type of corner found: Evidence used to identify or procedure used to establish or reestablish the corner:
FND STD. ST. MONUMENTS AS SHOWN ON 6 RM 11 AND FND. 3/4" REBAR & CAP RCE 18200, AS SHOWN ON 2007 MAPS 11 AND ON REVERSE.

A description of the physical condition of the monument as found and as set or reset:
SET 3/4" IRON PIPES & TAGS, PLS 5296, AS SHOWN ON REVERSE.

SURVEYOR'S STATEMENT

This Corner record was prepared by me or under my direction in conformance with the Land Surveyor's Act on FEBRUARY 15, 2012

Signed [Signature] P.L.S. or R.C.E. No. PLS 5296



COUNTY SURVEYOR'S STATEMENT

This Corner Record was received FEBRUAR 29, 2012 and examined and filed MAY 17, 2012

Signed [Signature] P.L.S. or R.C.E. No. 7128

Title COUNTY SURVEYOR



County Surveyor's Comment

BASIS OF BEARINGS

HELD MON. TO MON.
 N1°08'18"E 257.86 R&M
 (N0°34'34"E 257.90) R3

R=505
 D=29°35'
 L=260.74
 (D=29°35'17") R3
 L=260.79

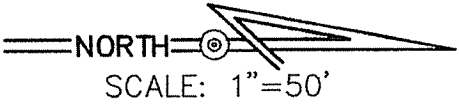
L=11.763
 D=1°17'02"
 R2&R3

L=7.545
 D=10°48'27"
 R2&R3

D=68°22'57"
 L=47.74

(R) N74°04'12"W
 CALC PER R1 & R2

AMENDED MAP OF
 A PTN. OF GREENBRAE
 SUB NO. ONE
 6 RM 11
 (LOTS 103-105 & 110-112)

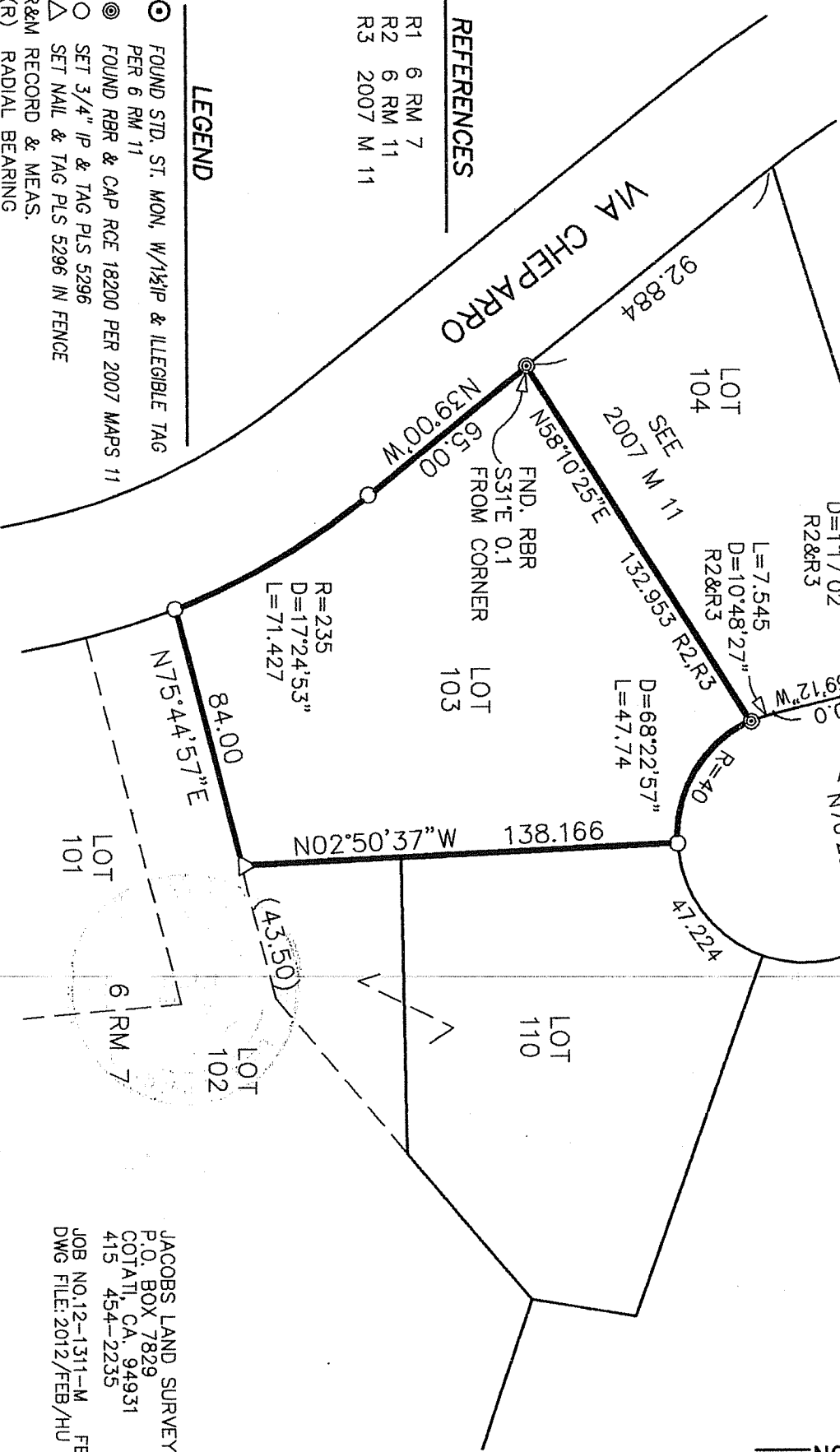


VIA CHEPARRO

- REFERENCES**
- R1 6 RM 7
 - R2 6 RM 11
 - R3 2007 M 11

LEGEND

- ⊙ FOUND STD. ST. MON. W/1/2"IP & ILEGIBLE TAG PER 6 RM 11
- ⊙ FOUND RBR & CAP RCE 18200 PER 2007 MAPS 11
- SET 3/4" IP & TAG PLS 5296
- △ SET NAIL & TAG PLS 5296 IN FENCE
- R&M RECORD & MEAS.
- (R) RADIAL BEARING



JACOBS LAND SURVEYING
 P.O. BOX 7829
 COTATI, CA, 94931
 415 454-2235
 JOB NO. 12-1311-M FB#69
 DWG FILE: 2012/FEB/HU