

CORNER RECORD

Document Number APN 070-101-12

City of TIBURON County of Marin California.

Brief Legal Description: LOT 122, MAP OF GREENBRAE, SUB # 1: BK 6 RM 7 MARIN CO RCDS

CORNER TYPE:

Government Corner Control
 Meander Property
 Rancho Other
 Date of Survey _____

COORDINATES

[Optional]
 N> _____
 E> _____
 Zone _____ Datum _____
 Elev> _____

CORNER: ----- Left as found Found & Tagged Established Reestablished Rebuilt

Identification & Type of Corner Found: Evidence used to identify or procedure used to establish or reestablish the corner.

FOUND STD WELL MONUMENTS PER SUBDIVISION MAP.

description of the physical condition of the monument as found and as set or reset:
Original corners not found: Set points as shown on reverse.

SURVEYOR'S STATEMENT

The corner record was prepared by me or under my direction in conformance with the Land Surveyors' Act on OCT 2002

Signed: Douglas J. Matteson LS or RCE # C 18200



COUNTY SURVEYORS STATEMENT

This corner record was received: NOVEMBER 13, 2002

and filed NOVEMBER 19, 2002

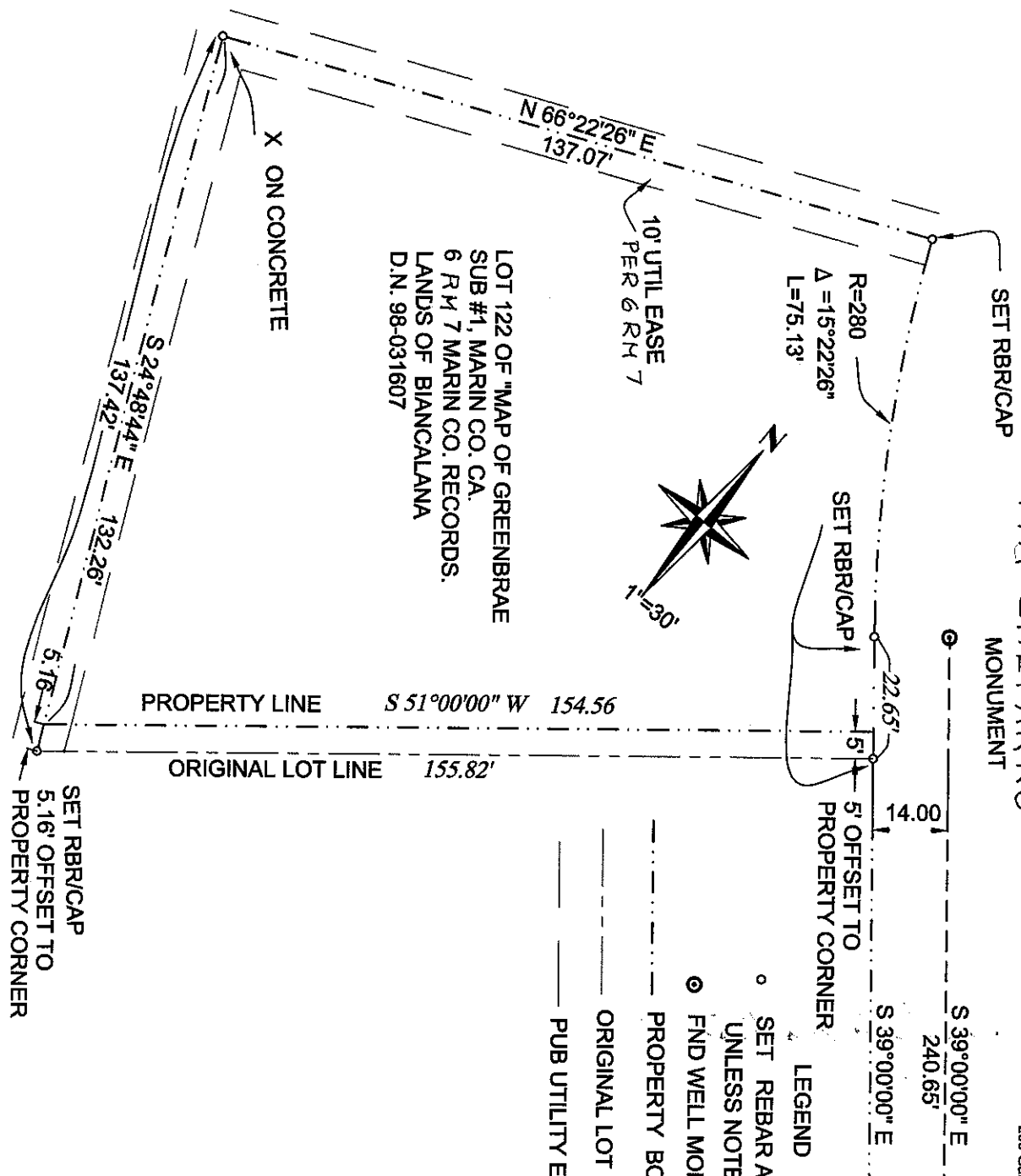
Signed: _____ Title: DEPUTY



COUNTY SURVEYOR'S COMMENT _____

VIA CHERARRO MONUMENT

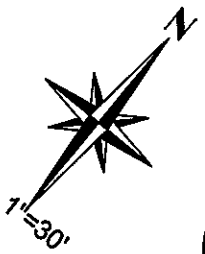
DOUGLAS J. MATTESON
CONSULTING
CIVIL ENGINEER AND SURVEYOR
200 Gate Five Road Suite 210A Sausalito California



LOT 122 OF "MAP OF GREENBRAE SUB #1, MARIN CO. CA. 6 RM 7 MARIN CO. RECORDS. LANDS OF BIANCALANA D.N. 98-031607

10' UTIL EASE PER 6 RH 7

R=280
Δ=15°22'26"
L=75.13'



PROPERTY LINE S 51°00'00" W 154.56
ORIGINAL LOT LINE 155.82'

5' OFFSET TO PROPERTY CORNER

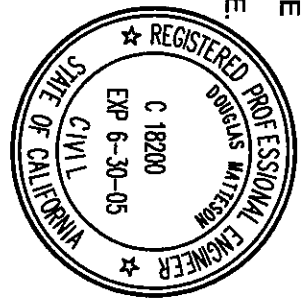
S 39°00'00" E 240.65'

LEGEND

- SET REBAR AND CAP RCE 18,200 UNLESS NOTED OTHERWISE
- FND WELL MON. PER 6 RH 7
- PROPERTY BOUNDARY
- ORIGINAL LOT LINE
- PUB UTILITY EASE.

SET RBR/CAP 5.16' OFFSET TO PROPERTY CORNER

X ON CONCRETE



10-18-01