

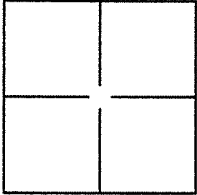
CORNER RECORD

Document Number APN: 070-094-13

City of GREENBRAE

County of MARIN, California

Brief Legal Description LOT 633, MAP OF GREENBRAE SUB. NO. 4 (7 RM 26)



CORNER TYPE

Government Corner Control
 Meander Property
 Rancho Other

Date of Survey APRIL 12, 2010

COORDINATES (Optional)

N. _____
 E. _____
 Zone _____ NAD27 NAD83
 NAD83 Epoch _____
 Elev. _____
 Vert. Datum: NGVD29 NAVD88
 Meas. Units: Metric Imperial

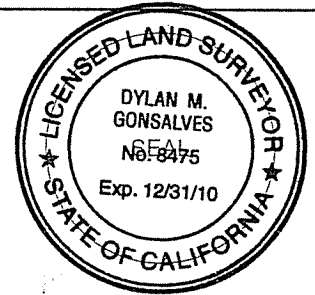
Corner - Left as found Found and tagged Established Reestablished Rebuilt

Identification and type of corner found: Evidence used to identify or procedure used to establish or reestablish the corner:
FOUND CONCRETE WELL MONUMENTS ALONG LOS CERROS DR. AND NORTH ALMENAR DR. PER 7 RM 26,
LOCATIONS SHOWN ON PAGE 2. IT SHOULD BE NOTED THE BEARING ALONG THE NORTH LINE OF THE
SUBJECT LOT 633 IS SUBSTANTIALLY DIFFERENT THAN THE BEARING SHOWN ON THE RECORD MAP. IT
IS READILY APPARENT UPON INSPECTION THAT A BLUNDER OCCURED ON THE ORIGINAL MAP, RATHER
THAN A MATERIAL DISCREPANCY AS ALL OTHER BEARINGS AND DISTANCES FOLLOW RECORD.

A description of the physical condition of the monument as found and as set or reset: _____
SET 5/8" REBARS WITH PLASTIC CAP STAMPED "LS 8475" AT THE LOCATIONS SHOWN ON PAGE 2.

SURVEYOR'S STATEMENT

This Corner Record was prepared by me or under my direction in conformance with
 the Land Surveyor's Act on JUNE 4, 2010.
 Signed *Dylan M. Gonsalves* P.L.S. or R.C.E. No.: 8475

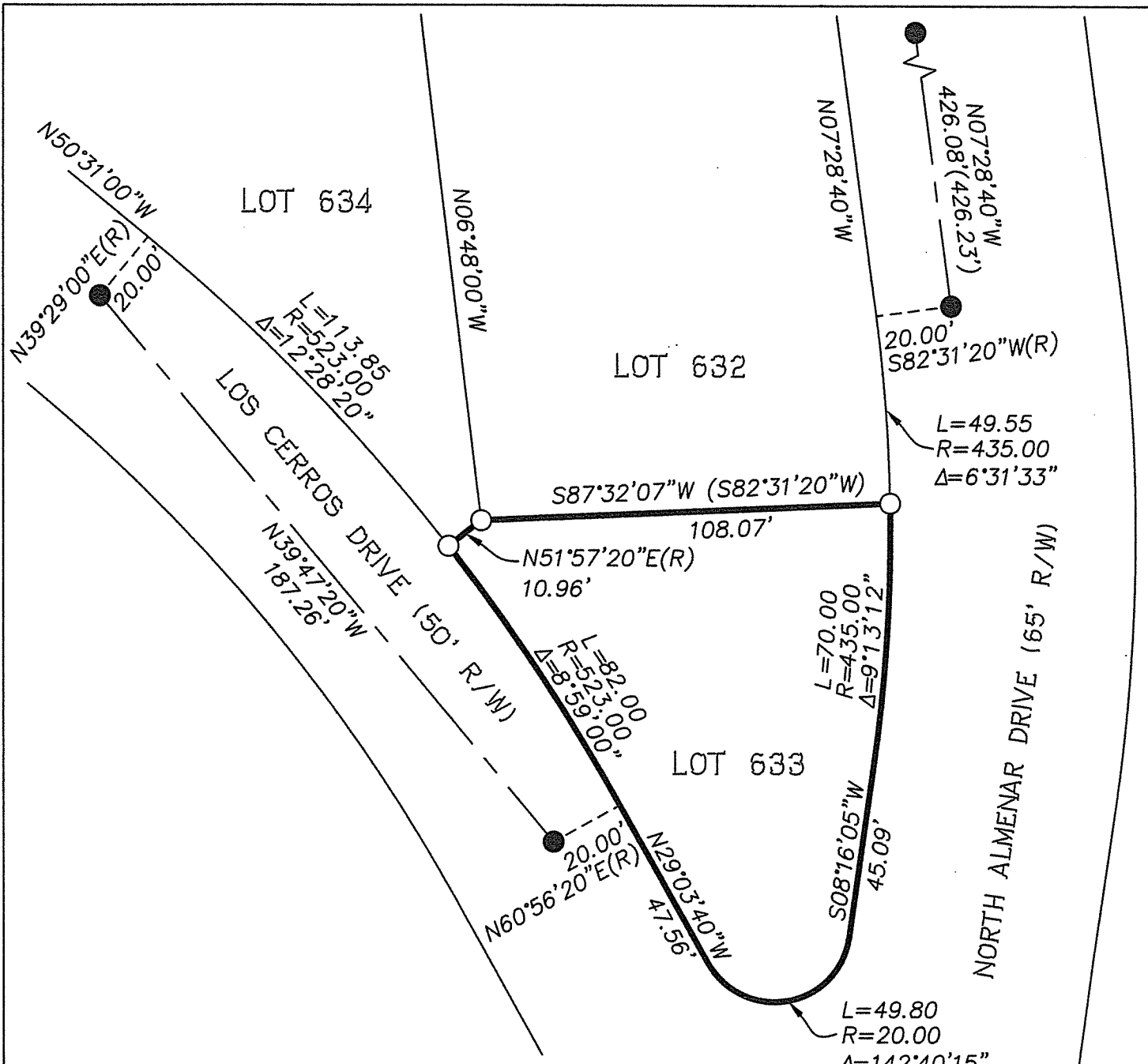


COUNTY SURVEYOR'S STATEMENT

This Corner Record was received JUNE 7, 2010 and examined
 and filed JUNE 29, 2010.
 Signed *Craig Tackabery* P.L.S. or R.C.E. No.: 7128
 Title COUNTY SURVEYOR



County Surveyor's Comment _____



LEGEND

NOTE: DISTANCES AND DIMENSIONS SHOWN HEREON ARE GIVEN IN FEET AND DECIMALS THEREOF.

- BOUNDARY
- MONUMENT LINE
- TIE LINE
- FOUND WELL MONUMENT WITH NAIL AND TAG "RE 1812" IN CONCRETE PER 7 RM 26
- SET 5/8" REBAR AND CAP "PLS 8475"
- RADIAL (R)
- RECORD DATA PER 7 RM 26 ()

