

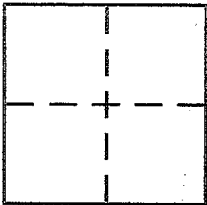
**CORNER RECORD**

Document Number 70-093-04

City of Greenbrae

County of MARIN, California

Brief Legal Description LOT 281 MAP OF GREENBRAE SUB. 2 G RM 44



**CORNER TYPE**

Government Corner  Control   
Meander  Property   
Rancho  Other   
Date of Survey 6-22 & 23-2005

**COORDINATES (Optional)**

N. \_\_\_\_\_  
E. \_\_\_\_\_  
Zone \_\_\_\_\_ NAD27  NAD83   
NAD83 Epoch \_\_\_\_\_  
Elev. \_\_\_\_\_  
Vert. Datum: NGVD29  NAVD88   
Meas. Units: Metric  Imperial

Corner - Left as found  Found and tagged  Established  Reestablished  Rebuilt

Identification and type of corner found: Evidence used to identify or procedure used to establish or reestablish the corner:

REESTABLISH THE NORTHERLY LINE OF LOT 281 (COMMON WITH THE SOUTHERLY LINE OF LOT 282) OF THE MAP OF GREENBRAE SUB. 2 G RM 44 FROM EXISTING STANDARD STREET MONUMENTS OF RECORD OF SAID G RM 44 ON NADINA WAY & ON TIOAGA LANE. SEE SKETCH ON REVERSE SIDE FOR DETAILS.

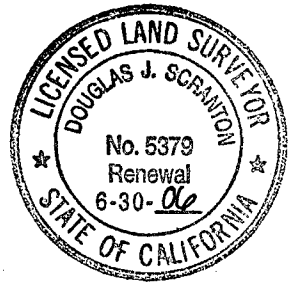
A description of the physical condition of the monument as found and as set or reset:

Set 1/2" rebar with PLS CAP 5379 AFFIXED TO THE TOP & DRIVEN FLUSH WITH SURROUNDING GRADE. POINTS WERE SET AT RANDOM INTERVALS ALONG SAID REFERRED LOT LINE & AT THE NORTH WESTERLY CORNER OF SAID LOT 281

**SURVEYOR'S STATEMENT**

This Corner Record was prepared by me or under my direction in conformance with the Land Surveyor's Act on July 5th 2005

Signed Douglas J. Scranton P.L.S. or R.C.E. No. PLS 5379



**COUNTY SURVEYOR'S STATEMENT**

This Corner Record was received JULY 7, 2005

and examined and filed AUGUST 9, 2005

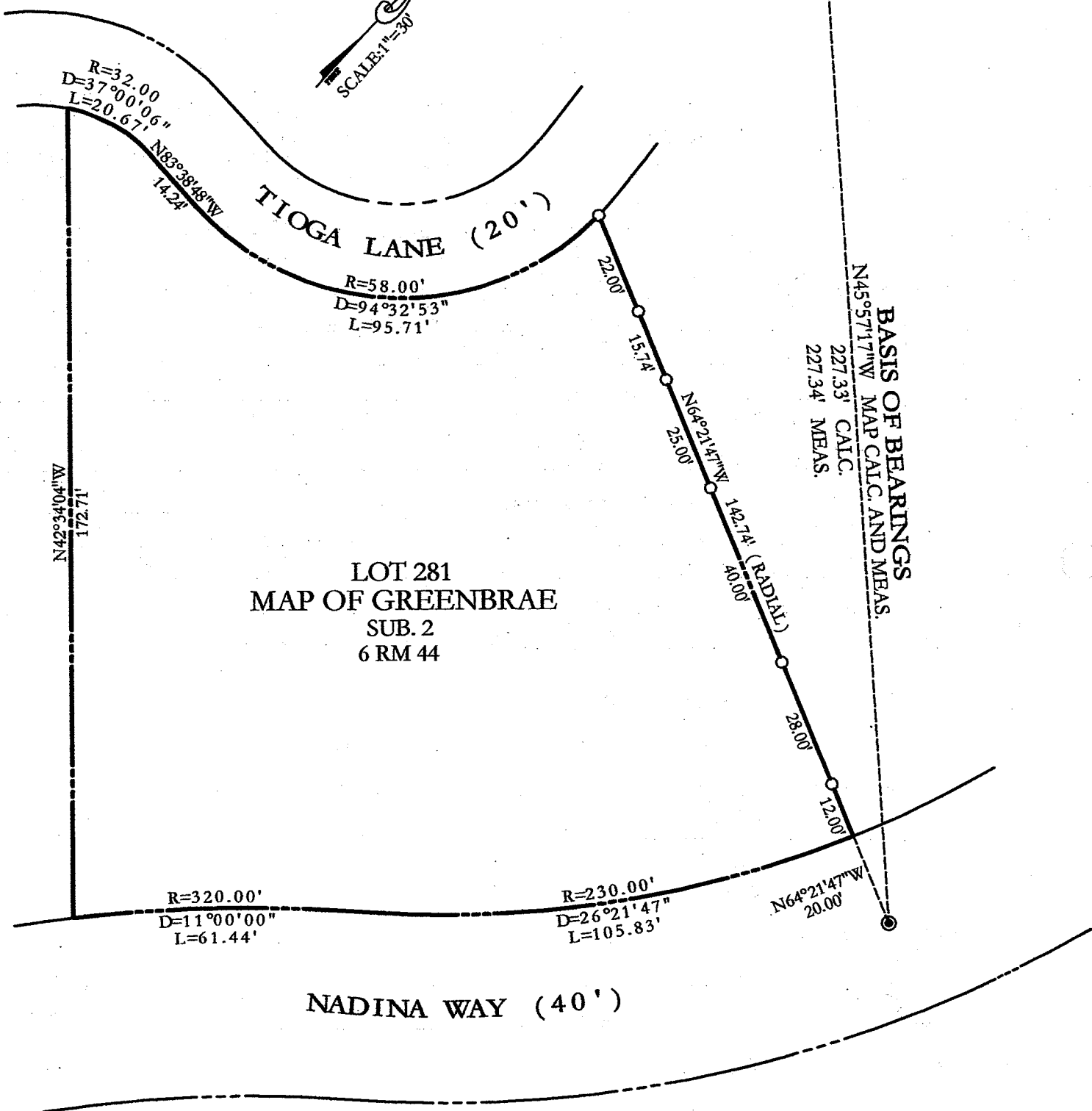
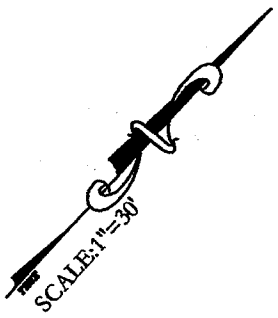
Signed [Signature] P.L.S. or R.C.E. No. 7128

Title COUNTY SURVEYOR



County Surveyor's Comment \_\_\_\_\_

PREPARED BY: DJ SCRANTON SURVEYING NOVATO, CALIFORNIA



LOT 281  
MAP OF GREENBRAE  
SUB. 2  
6 RM 44

BASIS OF BEARINGS  
N45°57'17\"/>

LEGEND

ALL DISTANCES GIVEN IN FEET  
AND DECIMALS THEREOF  
NO EASEMENTS ARE DEPICTED

- SET 1/2" REBAR/PLS 5379
- STREET MONUMENT

BASIS OF BEARINGS

TAKEN AS N45°57'17\"/>