

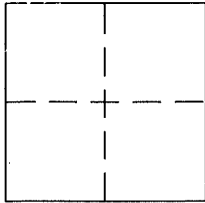
CORNER RECORD

Document Number APN 070-093-03

City of UNINCORPORATED

County of MARIN, California

Brief Legal Description LOT 280 AS SHOWN ON THE MAP OF GREENBRAE SUB. No. TWO, FILED NOVEMBER 7, 1947 IN BOOK 6 OF MAPS AT PAGE 44, MARIN COUNTY RECORDS



CORNER TYPE

Government Corner Control
 Meander Property
 Rancho Other
 Date of Survey 3/1/2017

COORDINATES (Optional)

N. _____
 E. _____
 Zone _____ NAD27 NAD83
 NAD83 Epoch _____
 Elev. _____
 Vert. Datum: NGVD29 NAVD88
 Meas. Units: Metric Imperial

Corner - Left as found Found and tagged Established Reestablished Rebuilt

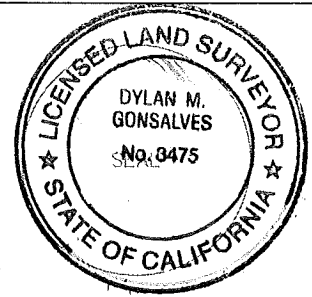
Identification and type of corner found: Evidence used to identify or procedure used to establish or reestablish the corner:
SEE PAGE 2

A description of the physical condition of the monument as found and as set or reset:
SEE PAGE 2

SURVEYOR'S STATEMENT

This Corner Record was prepared by me or under my direction in conformance with the Land Surveyor's Act on 6/9/17

Signed [Signature] P.L.S. or R.C.E. No. 8475



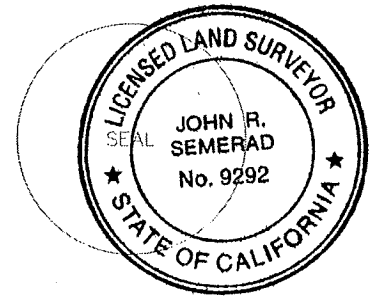
COUNTY SURVEYOR'S STATEMENT

This Corner Record was received MARCH 21, 2017

and examined and filed 6/20/17

Signed [Signature] P.L.S. or R.C.E. No. 9292

Title DEPUTY C.S.



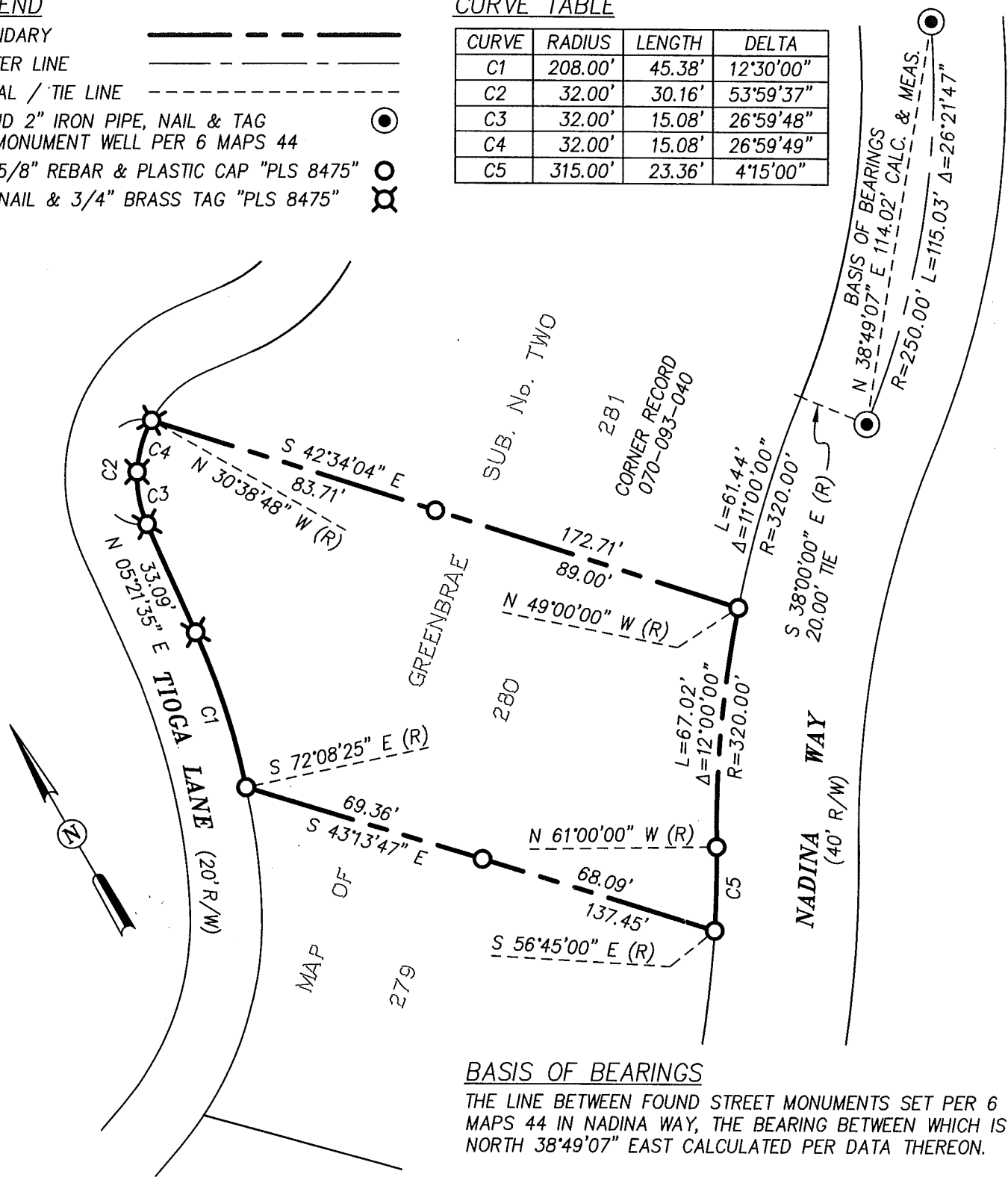
County Surveyor's Comment PER BUSINESS AND PROFESSIONS CODE SECTION 8705(d), IT IS THE OPINION OF THE COUNTY SURVEYOR AND/OR DEPUTIES THAT OTHER ~~AND~~ MONUMENTATION MAY EXIST AND IF RECOVERED AND CONSIDERED IN DETERMINING THE LOCATION OF THE SUBJECT PROPERTY CORNERS AND LINES SHOWN HEREON, COULD RESULT IN A MATERIALLY ALTERNATE POSITION OF SAID PROPERTY CORNERS OR LINES

LEGEND

- BOUNDARY
- CENTER LINE
- RADIAL / TIE LINE
- FOUND 2" IRON PIPE, NAIL & TAG
IN MONUMENT WELL PER 6 MAPS 44
- SET 5/8" REBAR & PLASTIC CAP "PLS 8475"
- SET NAIL & 3/4" BRASS TAG "PLS 8475"

CURVE TABLE

CURVE	RADIUS	LENGTH	DELTA
C1	208.00'	45.38'	12°30'00"
C2	32.00'	30.16'	53°59'37"
C3	32.00'	15.08'	26°59'48"
C4	32.00'	15.08'	26°59'49"
C5	315.00'	23.36'	4°15'00"



BASIS OF BEARINGS

THE LINE BETWEEN FOUND STREET MONUMENTS SET PER 6 MAPS 44 IN NADINA WAY, THE BEARING BETWEEN WHICH IS NORTH 38°49'07" EAST CALCULATED PER DATA THEREON.

GENERAL NOTES

1. DISTANCES ARE IN FEET AND DECIMALS THEREOF.
2. ALL DISTANCES: (RECORD) = MEASURED, UNLESS OTHERWISE NOTED.
3. EASEMENTS, IF ANY, ARE NOT SHOWN.

