

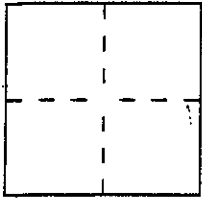
# CORNER RECORD

Document Number A. P. # 070-071-07

City of GREENBRAE

County of MARIN, California

Brief Legal Description LOT 1803, 14RM 9 & 381 LOS CERRITOS DR.



### CORNER TYPE

Government Corner  Control   
Meander  Property   
Rancho  Other   
Date of Survey \_\_\_\_\_

### COORDINATES (Optional)

N. \_\_\_\_\_  
E. \_\_\_\_\_  
Zone \_\_\_\_\_ Datum \_\_\_\_\_  
Elev. \_\_\_\_\_

Corner — Left as found  Found and tagged  Established  Reestablished  Rebuilt

Identification and type of corner found: Evidence used to identify or procedure used to establish or reestablish the corner:

FOUND STANDARD STREET MONUMENTS IN RECORD POSITION AND USED SAME TO ESTABLISH POINTS INDICATED.

A description of the physical condition of the monument as found and as set or reset:

MONUMENTS FOUND UNDISTURBED.

### SURVEYOR'S STATEMENT

This Corner Record was prepared by me or under my direction in conformance with the Land Surveyors' Act on APRIL 4 2001

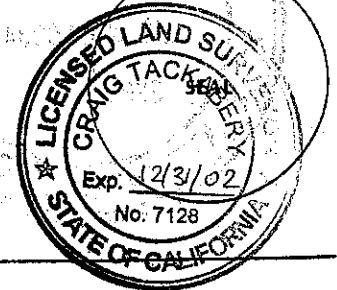
Signed [Signature] L.S. or R.C.E. Number LS 6234



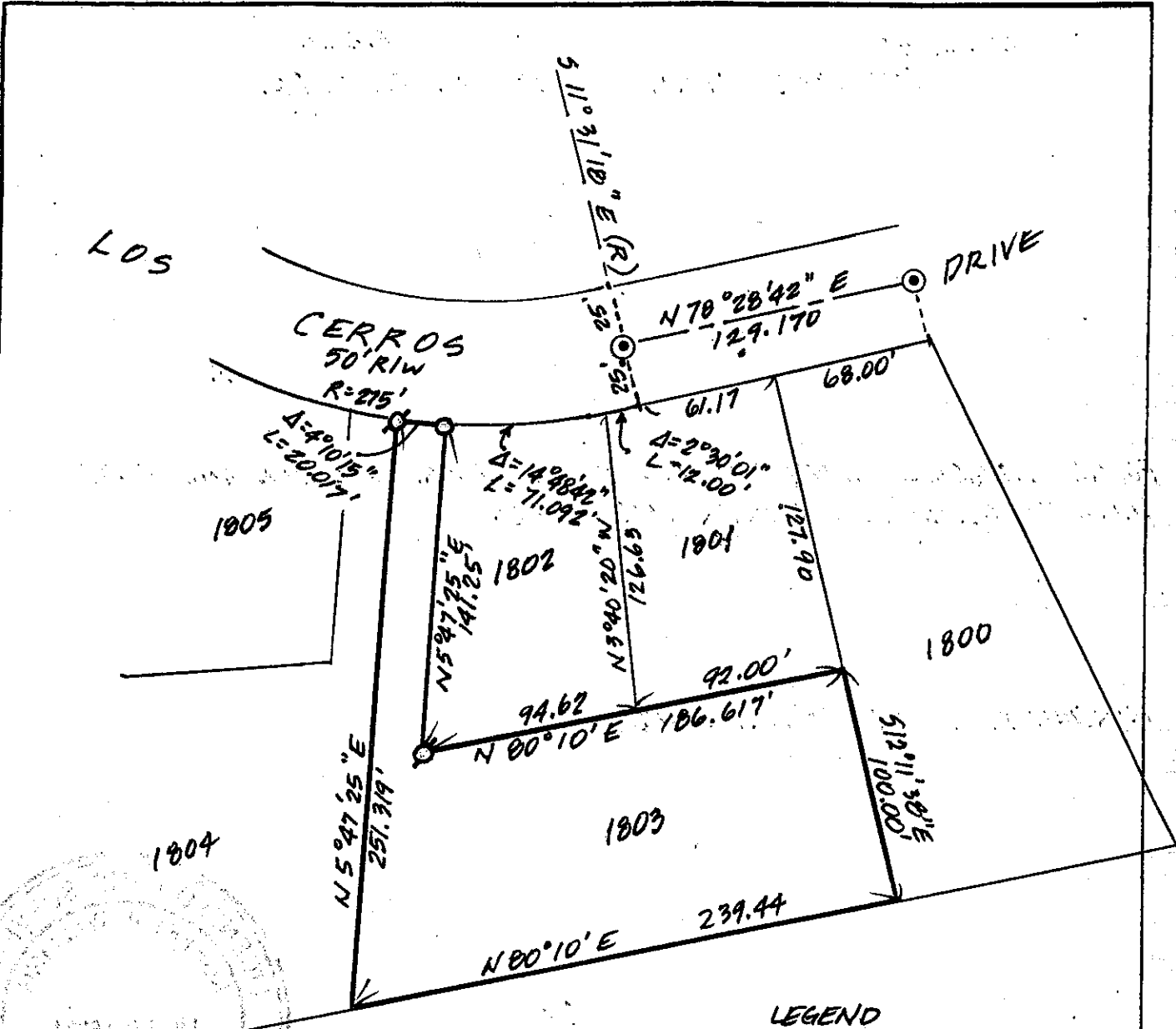
### COUNTY SURVEYOR'S STATEMENT

This Corner Record was received APRIL 9, 2001 and examined and filed APRIL 11, 2000

Signed [Signature] Title DEPUTY

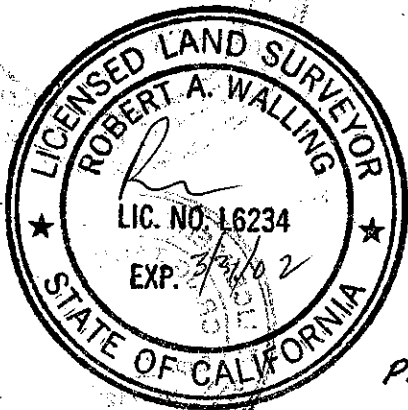


County Surveyor's Comment \_\_\_\_\_



**LEGEND**

- ⊙ FOUND STD. STREET MON.
- SET 1/2" PIN, L56234
- ⊗ SET NAIL W/TAG L56234



**SURVEY PLAT**  
 PARTIAL SURVEY LOT 1803  
 14 RM 9  
 GREENBRAE SUBDIVISION NO. 17  
 MARIN CO., CALIFORNIA

APRIL 2001.

JH. 101-10