

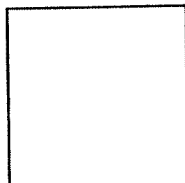
CORNER RECORD

APN 070-061-25

Document No 6 RM 72

City of Unincorporated Area (Greenbrae)
Brief Legal Description Lot 420, 6 RM 72

County of Marin, California



CORNER TYPE

Government Corner Control
Meander Property
Rancho Other
Date of Survey June 10, 2009

COORDINATES (Optional)

N. _____
E. _____
Zone _____ Datum _____
Elev. _____

Corner- Left as found Found and tagged Established Reestablished Rebuilt

Identification and type of corner found: Evidence used to identify or procedure to establish or reestablish the corner:
Established property corners on Lot 420, 6 RM 72 per found monuments as shown on herein sht. 2,
County of Marin.

A description of the physical condition of the monument as found and as set or reset:
Set 1/2" iron pipe w/ plastic cap, LS 5461 and 2x2 hub w/ tag LS 5461 at locations shown on herein sht.
2. Found monuments, shown on herein sht. 2.

SURVEYOR'S STATEMENT

This Corner Record was prepared by me or under my direction in conformance with the Land Surveyors Act on June 10, 2009.

Signed David Keane PLS Number 5461

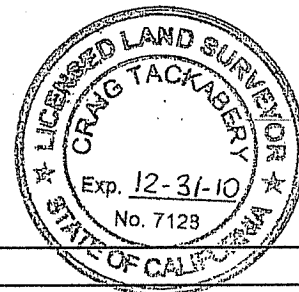


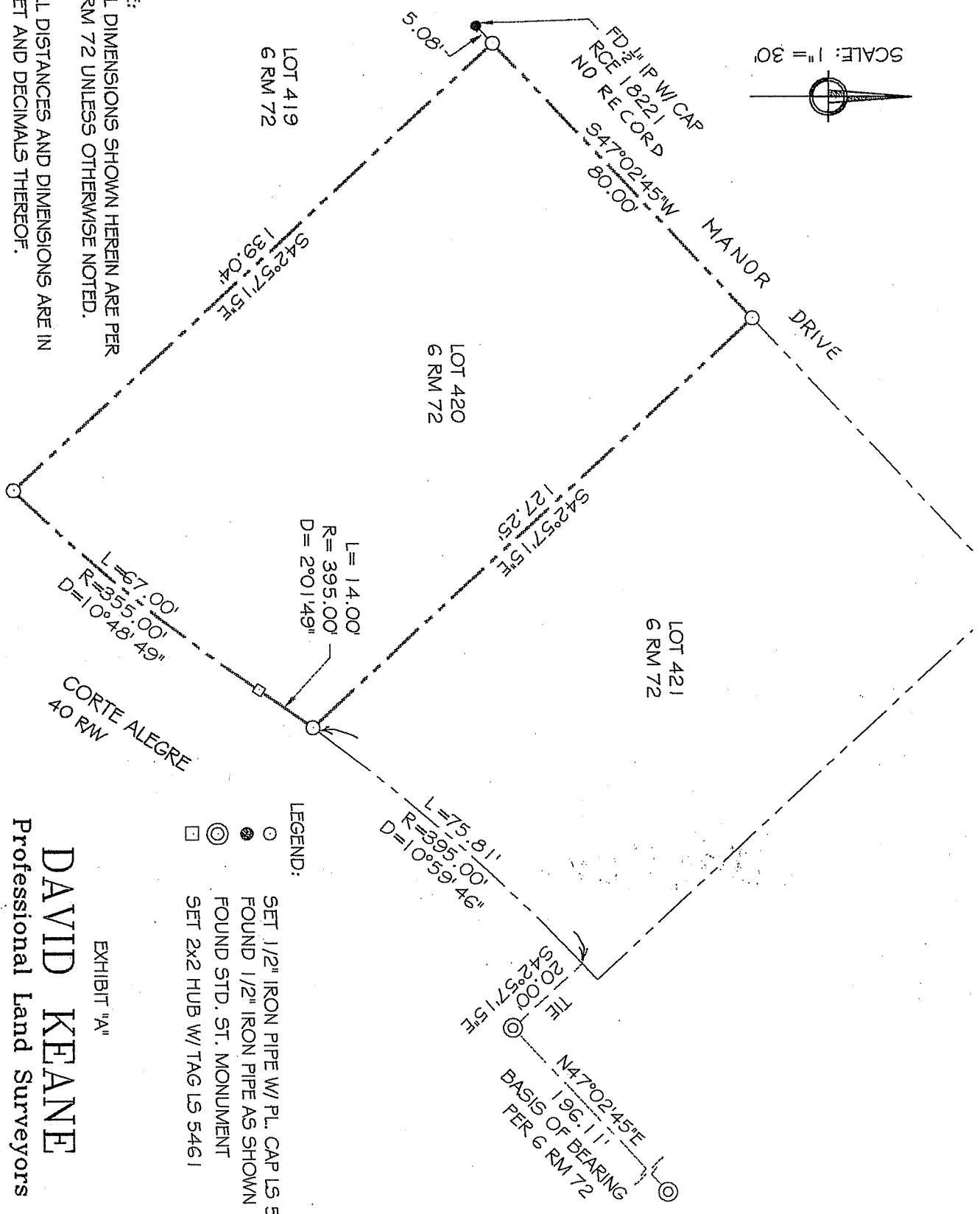
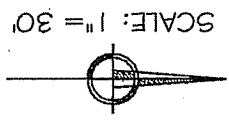
COUNTY SURVEYOR'S STATEMENT

This Corner Record was received June 15, 2009 and examined and filed July 16, 2009.

Signed [Signature] Title COUNTY SURVEYOR

County Surveyor's Comments _____





NOTE:
1. ALL DIMENSIONS SHOWN HEREIN ARE PER 6 RM 72 UNLESS OTHERWISE NOTED.
2. ALL DISTANCES AND DIMENSIONS ARE IN FEET AND DECIMALS THEREOF.

3. APN. 070-061-25

LEGEND:
 ○ SET 1/2" IRON PIPE W/ PL. CAP LS 546 I
 ● FOUND 1/2" IRON PIPE AS SHOWN
 ⊙ FOUND STD. ST. MONUMENT
 □ SET 2x2 HUB W/ TAG LS 546 I

EXHIBIT "A"
DAVID KEANE
 Professional Land Surveyors

tel: (415) 457-2514 fax: (415) 457-1491
 64 Cordone Drive
 San Anselmo, CA 94960