

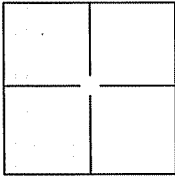
CORNER RECORD

Document Number A.P.N. 070-061-15

City of Greenbrae

County of Marin, California

Brief Legal Description Lot 430, Map of Greenbrae, 460 Los Cerros Drive, 6 RM 72.



CORNER TYPE

Government Corner Control
 Meander Property
 Rancho Other

Date of Survey 28 June 2010

COORDINATES(Optional)

N. _____
 E. _____
 Zone _____ NAD27 AD83
 NAD83 Epoch _____
 Elev. _____
 Vert. Datum: NGVD29 NADV88
 Meas. Units: Metric Imperial

Corner - Left as found Found and tagged Established Reestablished Rebuilt

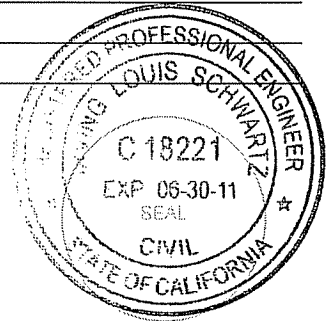
Identification and type of corner found: Evidence used to identify or procedure used to establish or reestablish the corner:
Found Monument, 1/2" Iron Pipe and Tag, R.C.E. 1818 (2).

A description of the physical condition of the monument as found and as set or reset:
Set NW, NE, SE, and SW corners (4 corners) on Lot 430, 6 RM 72, See Exhibit "A".

SURVEYOR'S STATEMENT

This Corner Record was prepared by me or under my direction in conformance with the Land Surveyor's Act on AUGUST 4, 2010

Signed [Signature] P.L.S. or R.C.E. No.: 18221



COUNTY SURVEYOR'S STATEMENT

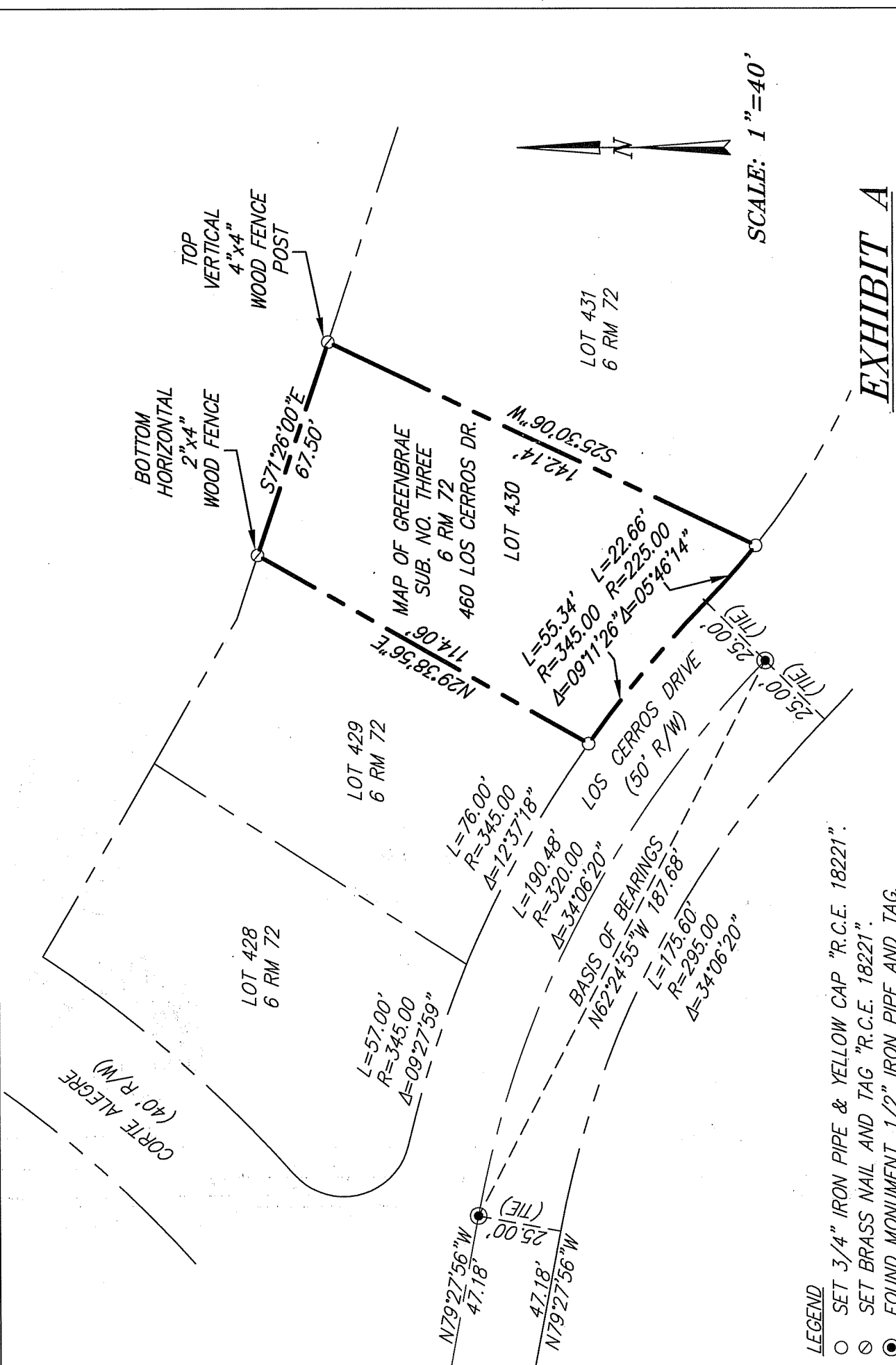
This Corner Record was received AUGUST 5, 2010 and examined and filed AUGUST 5, 2010

Signed [Signature] P.L.S. or R.C.E. No.: 7128

Title COUNTY SURVEYOR

County Surveyor's Comment _____





SCALE: 1"=40'

EXHIBIT A

ILS ASSOCIATES, INC.®
 CIVIL ENGINEERING AND LAND SURVEYING



79 GALLI DRIVE, SUITE A NOVATO, CA 94949-5717 (415)883-9200 FAX (415)883-2763

LEGEND

- SET 3/4" IRON PIPE & YELLOW CAP "R.C.E. 18221".
- SET BRASS NAIL AND TAG "R.C.E. 18221".
- FOUND MONUMENT, 1/2" IRON PIPE AND TAG, R.C.E. 1818.

NOTE:

ALL DIMENSIONS AND BEARINGS SHOWN HEREON ARE PER 6 RM 72.

DATE: 08/04/2010
 FILE: 8478CR.dwg
 PAGE 2 OF 2

A.P.N. 070-061-15