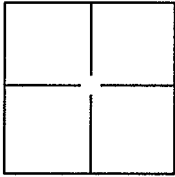


CORNER RECORD

Document Number APN 070-061-02
City of Greenbrae County of Marin, California

Brief Legal Description Lot 443 - Map of Greenbrae Sub. No. Three 6 RM 72



CORNER TYPE

Government Corner Control
Meander Property
Rancho Other
Date of Survey _____

COORDINATES(Optional)

N. _____
E. _____
Zone _____ NAD27 NAD83
NAD83 Epoch _____
Elev. _____
Vert. Datum: NGVD29 NADV88
Meas. Units: Metric Imperial

Corner - Left as found Found and tagged Established Reestablished Rebuilt

Identification and type of corner found: Evidence used to identify or procedure used to establish or reestablish the corner:

Found monuments along Corte Dorado per 6 RM 72.

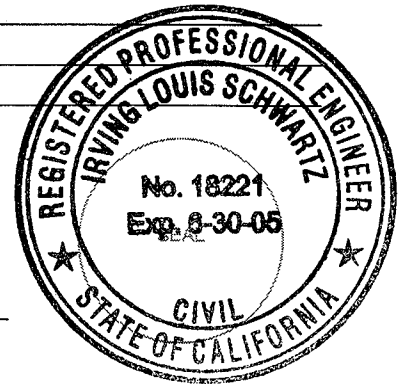
A description of the physical condition of the monument as found and as set or reset: _____

Set NW and NE corners and the three Ginny points along
northerly property line. See Exhibit A.

SURVEYOR'S STATEMENT

This Corner Record was prepared by me or under my direction in conformance with
the Land Surveyor's Act on DECEMBER 14, 2004.

Signed [Signature] P.L.S. or R.C.E. No.: 18221



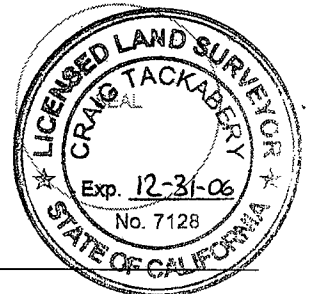
COUNTY SURVEYOR'S STATEMENT

This Corner Record was received DECEMBER 16, 2004 and examined
and filed MARCH 15, 2005.

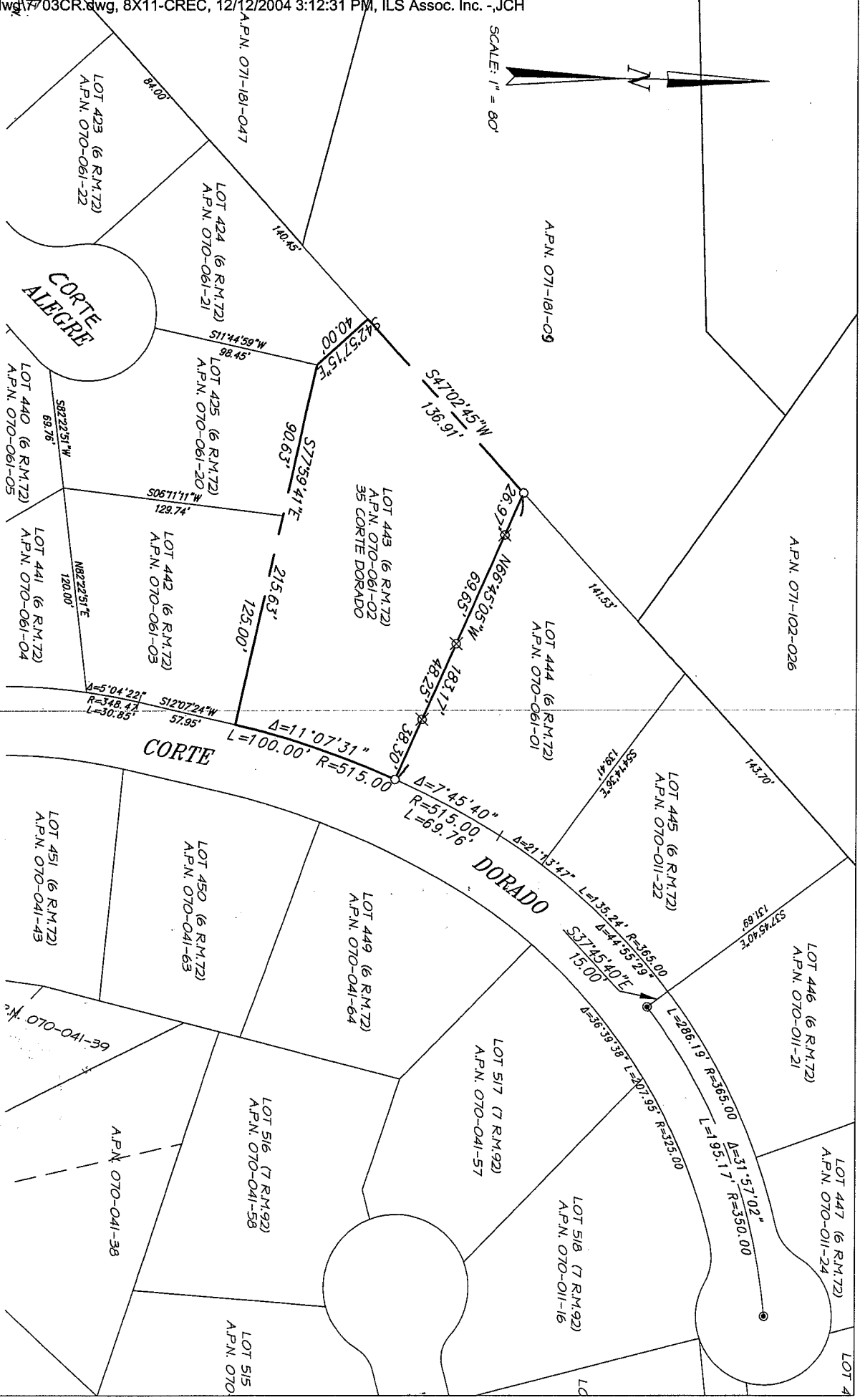
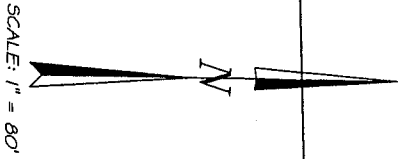
Signed [Signature] P.L.S. or R.C.E. No.: 7128

Title COUNTY SURVEYOR

County Surveyor's Comment _____



DATE: 12/12/04
FILE: 7703CR.DWG



LEGEND

- SET 3/4" IRON PIPE & CAP "R.C.E. 1822"
- ⊗ SET GINNY - POINT ON PROPERTY LINE
- FOUND STANDARD STREET MONUMENT

NOTE:

ALL DIMENSIONS AND BEARINGS SHOWN HEREON ARE PER 6 R.M. 72

EXHIBIT "A"



ILS ASSOCIATES, INC.®
CIVIL ENGINEERING AND LAND SURVEYING

79 GALLI DRIVE, SUITE A, NOVATO, CA 94948-5777 (415)889-9200 FAX (415)889-2783