

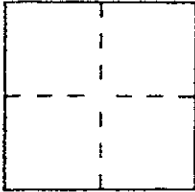
CORNER RECORD

Document Number A.P.N. 70-051-19

City of Greenbrae

County of Marin, California

Brief Legal Description Lot 614 Map of Greenbrae Sub. No. 4 7 RM26



CORNER TYPE

Government Corner Control
 Meander Property
 Rancho Other
 Date of Survey _____

COORDINATES (Optional)

N. _____
 E. _____
 Zone _____ Datum _____
 Elev. _____

Corner — Left as found Found and tagged Established Reestablished Rebuilt

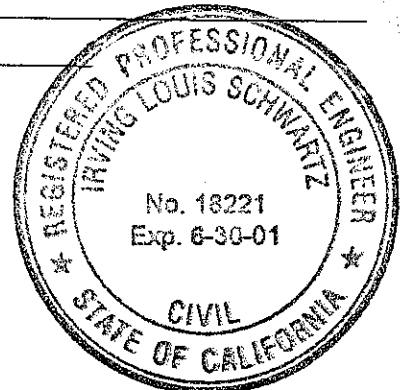
Identification and type of corner found: Evidence used to identify or procedure used to establish or reestablish the corner:
Found three (3) monuments in wells on the centerline of
North Almenar Drive as shown on 7 RM 26.

A description of the physical condition of the monument as found and as set or reset: _____
Set 3/4" iron pipes tagged "RCE 18221" at the northwest, southwest,
southeast and northeast corners and at an angle point in the northerly
boundary line.

SURVEYOR'S STATEMENT

This Corner Record was prepared by me or under my direction in conformance with
 the Land Surveyors' Act on AUGUST 22, 2000

Signed [Signature] L.S. or R.C.E. Number 18221



COUNTY SURVEYOR'S STATEMENT

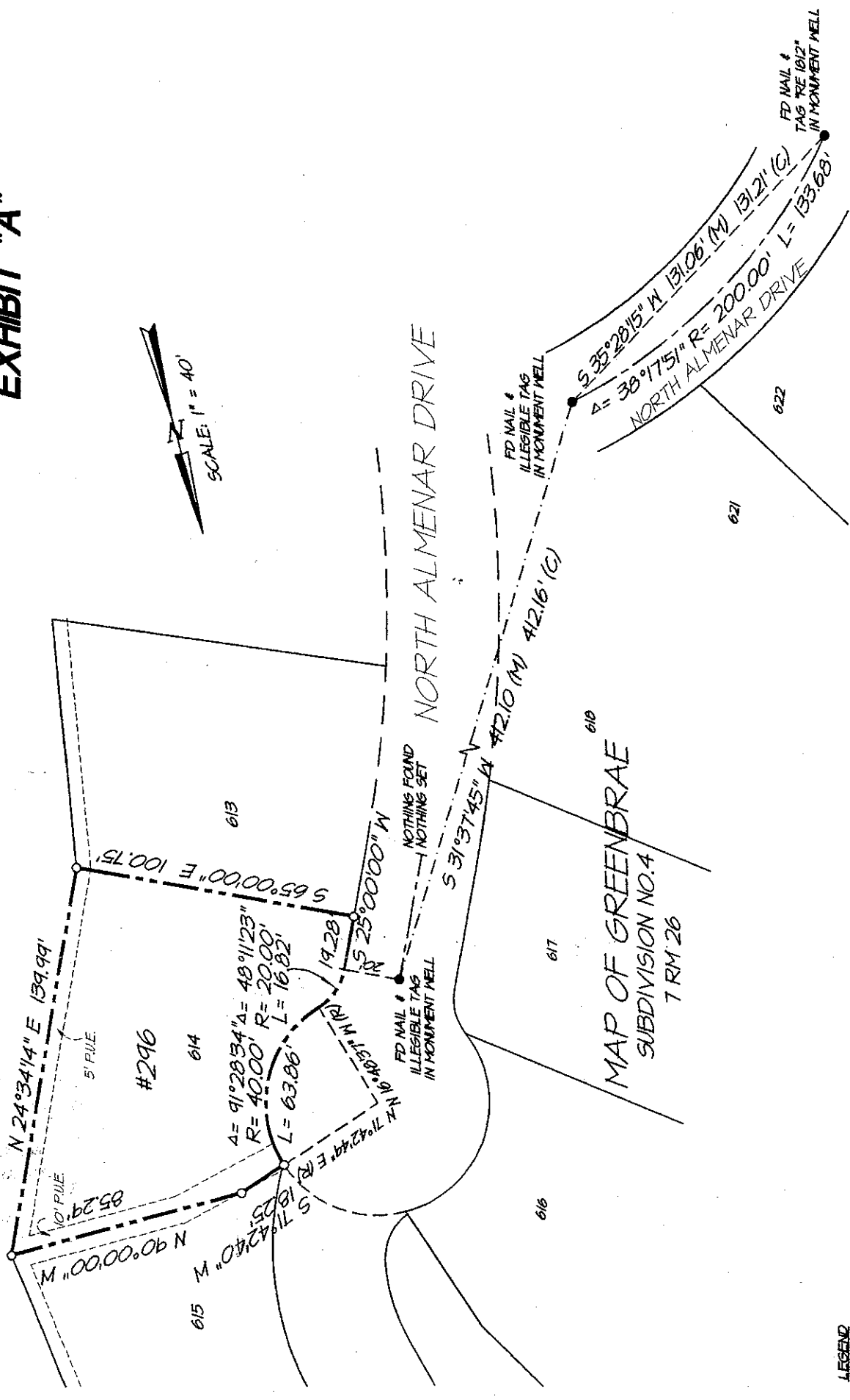
This Corner Record was received SEPT. 12, 2000 and examined
 and filed SEPTEMBER 13, 2000

Signed [Signature] Title DEPUTY



County Surveyor's Comment _____

EXHIBIT "A"



LEGEND

- FOUND MONUMENT AS NOTED
- SET 3/4" IRON PIPE & TAG "R.C.E. 18221"

NOTE:
ALL DIMENSIONS SHOWN HEREON ARE PER
7 RM 26 UNLESS OTHERWISE NOTED.



I.L. SCHWARTZ ASSOCIATES, INC.®
CIVIL ENGINEERING AND LAND SURVEYING

79 GALLI DRIVE NOVATO, CA 94949 (415)883-9200 FAX 883-2763

A.P.N. 70-051-19

DATE: 8-21-00
FILE: 7160REC.DWG