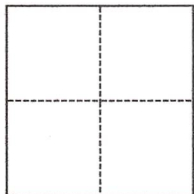


CORNER RECORD

Agency Index DPW#21-034
Document Number APN 070-051-13

City of Greenbrae County of Marin, California
Brief Legal Description Lot 620 of Map of Greenbrae Sub. Four, 7 RM 26, MCR

CORNER TYPE



- Government Corner
- Meander
- Rancho
- Control
- Property
- Other

Date of Survey February 25, 2021

COORDINATES (Optional)

N. _____ E. _____
 Elevation _____
 Units Metric U.S. Survey Foot
 Horizontal Datum _____
 Zone _____ Epoch Date _____
 Vertical Datum _____
 Complies with Public Resources Code §§8801-8819
 Complies with Public Resources Code §§8890-8902

PLS Act Ref.: 8765(d) 8771 8773 Other:
 Corner/Monument: Left as found Established Rebuilt Pre-Construction
 Found and tagged Reestablished Referenced Post-Construction

Narrative of corner identified and monument as found, set, reset, replaced, or removed:

See sheet #2 for description(s):

Found centerline monuments with steel pin in concrete matching record, established front lot corners for Lot 620 and one side line point along Lot 620/621. Note that the center line monument in front of Lot 621 has been obliterated.

SURVEYOR'S STATEMENT

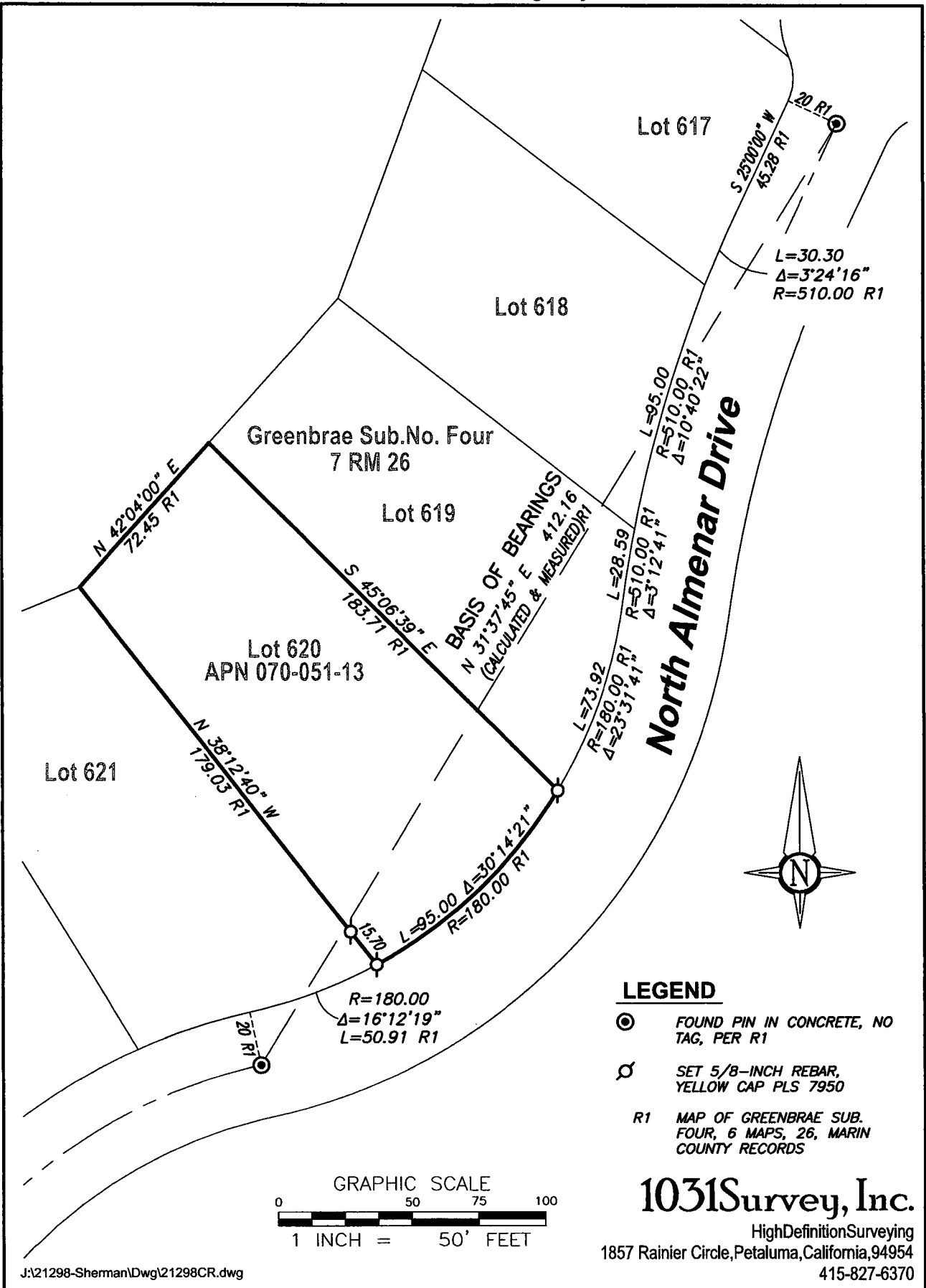
This Corner Record was prepared by me or under my direction in conformance with
 the Professional Land Surveyors' Act on March 1, 2021
 Signed [Signature] P.L.S. or R.C.E. No. 7950



COUNTY SURVEYOR'S STATEMENT

This Corner Record was received 03/02/2021
 and examined and filed 06/10/2021
 Signed T.W. Park P.L.S. or R.C.E. No. 8176
 Title COUNTY SURVEYOR
 County Surveyor's Comment _____





J:\21298-Sherman\Draw\21298CR.dwg