

**CORNER RECORD**

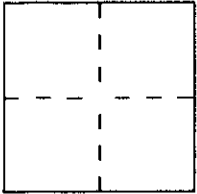
Document Number APN 70-041-44

City of Greenbrae

County of Marin, California

Brief Legal Description LOT 450 G RM 72,

APN 70-041-44



**CORNER TYPE**

- Government Corner
- Meander
- Rancho
- Date of Survey \_\_\_\_\_
- Control
- Property
- Other

**COORDINATES (Optional)**

N. \_\_\_\_\_  
 E. \_\_\_\_\_  
 Zone \_\_\_\_\_ Datum \_\_\_\_\_  
 Elev. \_\_\_\_\_

Corner — Left as found  Found and tagged  Established  Reestablished  Rebuilt

Identification and type of corner found: Evidence used to identify or procedure used to establish or reestablish the corner:

See sketch on back

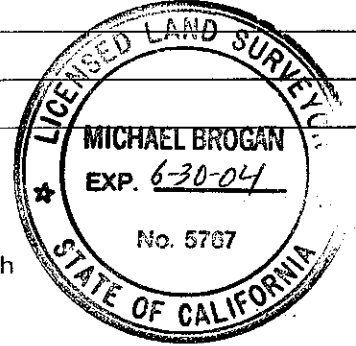
A description of the physical condition of the monument as found and as set or reset:

See sketch on back

**SURVEYOR'S STATEMENT**

This Corner Record was prepared by me or under my direction in conformance with the Land Surveyors' Act on Sept 7 2000 ~~19~~

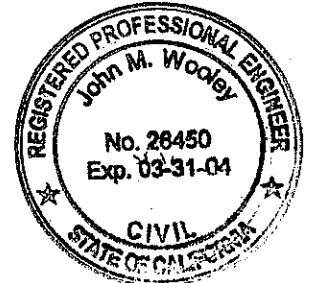
Signed Michael A. Brogan L.S. or R.C.E. Number LS 5767



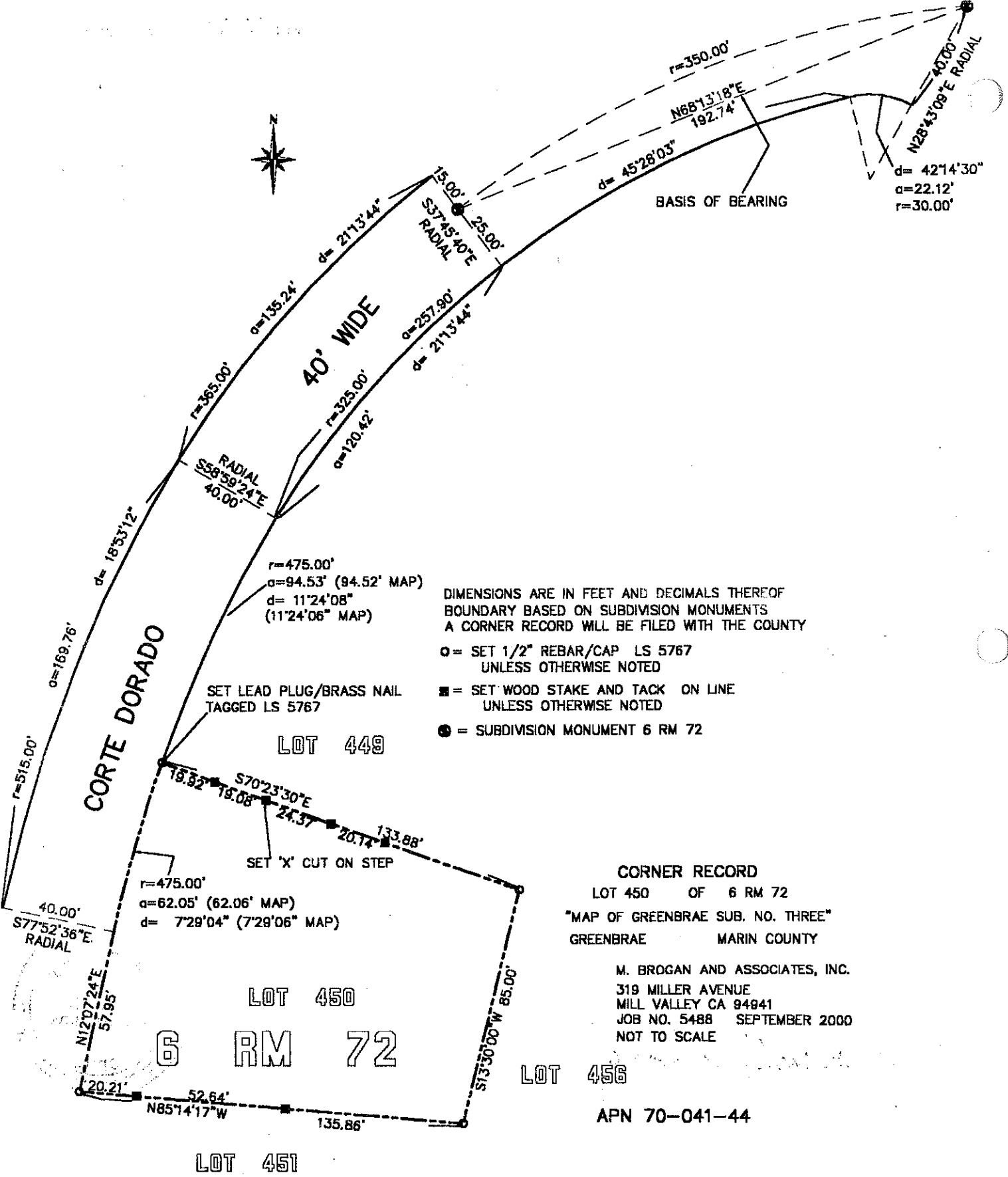
**COUNTY SURVEYOR'S STATEMENT**

This Corner Record was received 10-3-2000 ~~19~~ and examined and filed 10-4-2000 ~~19~~

Signed John M. Wooley Title DEPUTY



County Surveyor's Comment \_\_\_\_\_



DIMENSIONS ARE IN FEET AND DECIMALS THEREOF  
 BOUNDARY BASED ON SUBDIVISION MONUMENTS  
 A CORNER RECORD WILL BE FILED WITH THE COUNTY

○ = SET 1/2" REBAR/CAP LS 5767  
 UNLESS OTHERWISE NOTED

■ = SET WOOD STAKE AND TACK ON LINE  
 UNLESS OTHERWISE NOTED

● = SUBDIVISION MONUMENT 6 RM 72

SET LEAD PLUG/BRASS NAIL  
 TAGGED LS 5767

SET 'X' CUT ON STEP

$r=475.00'$   
 $\alpha=62.05'$  (62.06' MAP)  
 $d=7'29.04"$  (7'29'06" MAP)

$r=475.00'$   
 $\alpha=94.53'$  (94.52' MAP)  
 $d=11'24.08"$   
 (11'24'06" MAP)

$d=42'14.30"$   
 $\alpha=22.12'$   
 $r=30.00'$

BASIS OF BEARING