

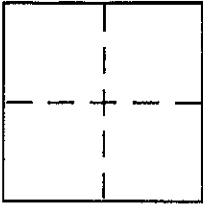
CORNER RECORD

Document Number A.P.N. 070-041-15

VICINITY City of GREENBRAE

County of MARIN, California

Brief Legal Description LOT 503 PER 7.R.M.92



CORNER TYPE

Government Corner Control
Meander Property
Rancho Other
Date of Survey 7-2-02

COORDINATES (Optional)

N. _____
E. _____
Zone _____ NAD27 NAD83
NAD83 Epoch _____
Elev. _____
Vert. Datum: NGVD29 NAVD88
Meas. Units: Metric Imperial

Corner - Left as found Found and tagged Established Reestablished Rebuilt

Identification and type of corner found: Evidence used to identify or procedure used to establish or reestablish the corner:

= SEE OVER =

A description of the physical condition of the monument as found and as set or reset:

= SEE OVER =

SURVEYOR'S STATEMENT

This Corner Record was prepared by me or under my direction in conformance with the Land Surveyor's Act on OCTOBER 17, 2002

Signed David Contreras P.L.S or R.C.E. No. LS 5065



COUNTY SURVEYOR'S STATEMENT

This Corner Record was received OCTOBER 22, 2002

and examined and filed OCTOBER 29, 2002

Signed _____ P.L.S or R.C.E. No. 7128

Title DEPUTY



County Surveyor's Comment _____

LOT 504

PROPERTY LINE EXTENDED, 11.00'

75.0' 5' P.U.E

LEGEND

- = SET 1/2" REBAR & CAP, L.S. 5065
- ⊙ = SET NAIL & TAG, L.S. 5065

N 15° 40' E

N 70° 26' W 173.55'

42.05' 50.12' 40.06' 21.97'

100' OFFSET LINE, S'LY OF PROP. LINE

DETAIL 1" = 50'

LOT 503

R=313'

549

548

542

546

Δ=21°29'2" 74.84

R=199.54 GRADE R=159

VISTA

FOUND NAIL & TAG L.S. 5065 PER COR. REC.

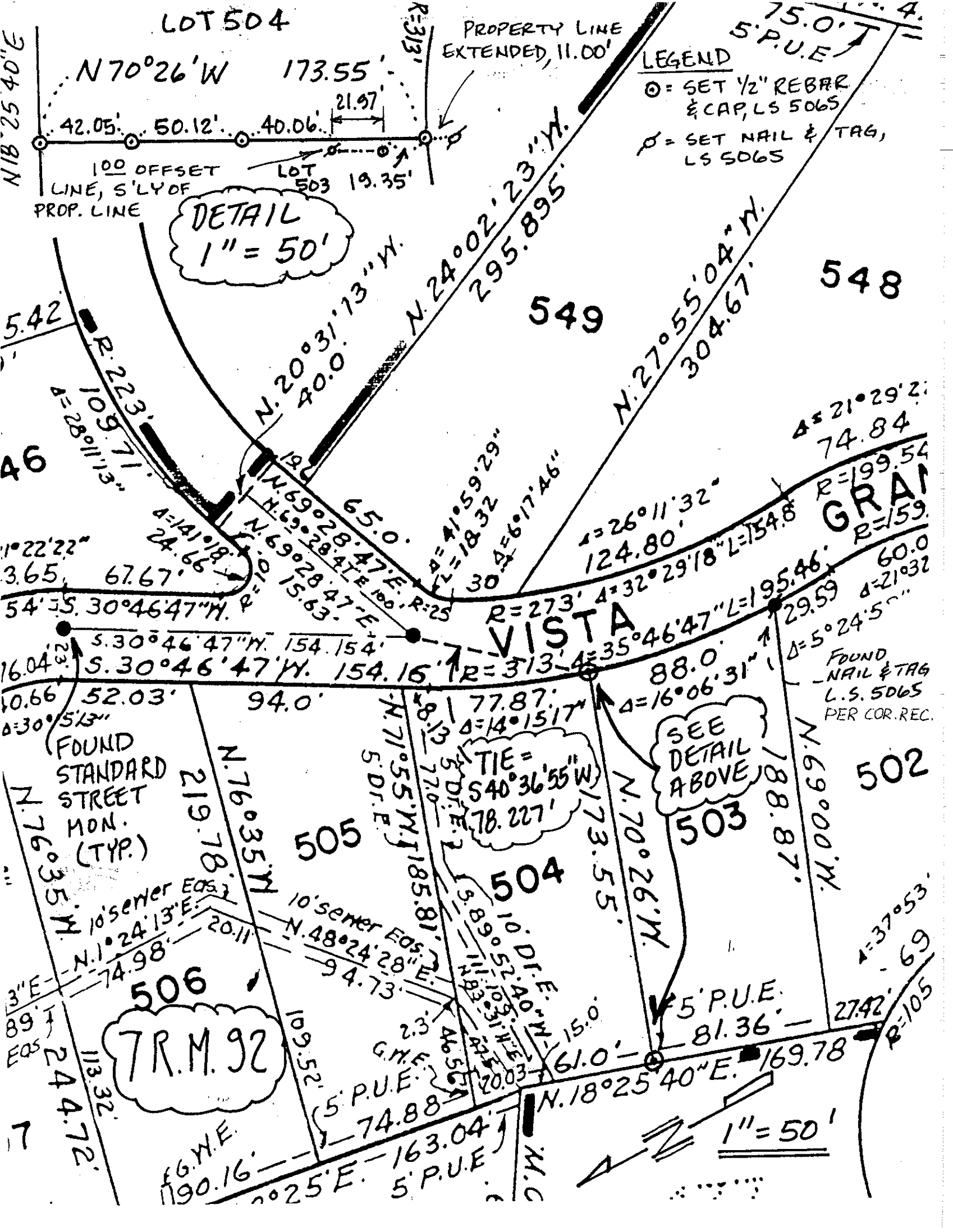
FOUND STANDARD STREET MON. (TYP.)

SEE DETAIL ABOVE

TR.M. 92

1" = 50'

7



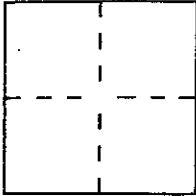
CORNER RECORD

Document Number APN 070-041-15

VICINITY OF GREEN BRAE
City of _____

County of MARIN, California

Brief Legal Description LOT 503 PER 7 R.M. 92



CORNER TYPE

Government Corner Control
Meander Property
Rancho Other
Date of Survey 9-15-99

**COORDINATES
(Optional)**

N. _____
E. _____
Zone _____ Datum _____
Elev. _____

Corner — Left as found Found and tagged Established Reestablished Rebuilt

Identification and type of corner found: Evidence used to identify or procedure used to establish or reestablish the corner:

= SEE OVER =

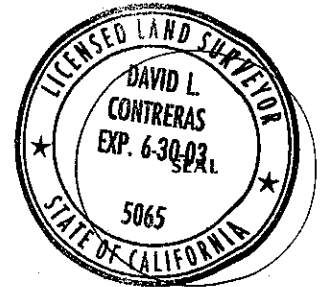
A description of the physical condition of the monument as found and as set or reset:

= SEE OVER =

SURVEYOR'S STATEMENT

This Corner Record was prepared by me or under my direction in conformance with the Land Surveyors' Act on 12-30 1999.

Signed David Contreras L.S. or R.C.E. Number 5065



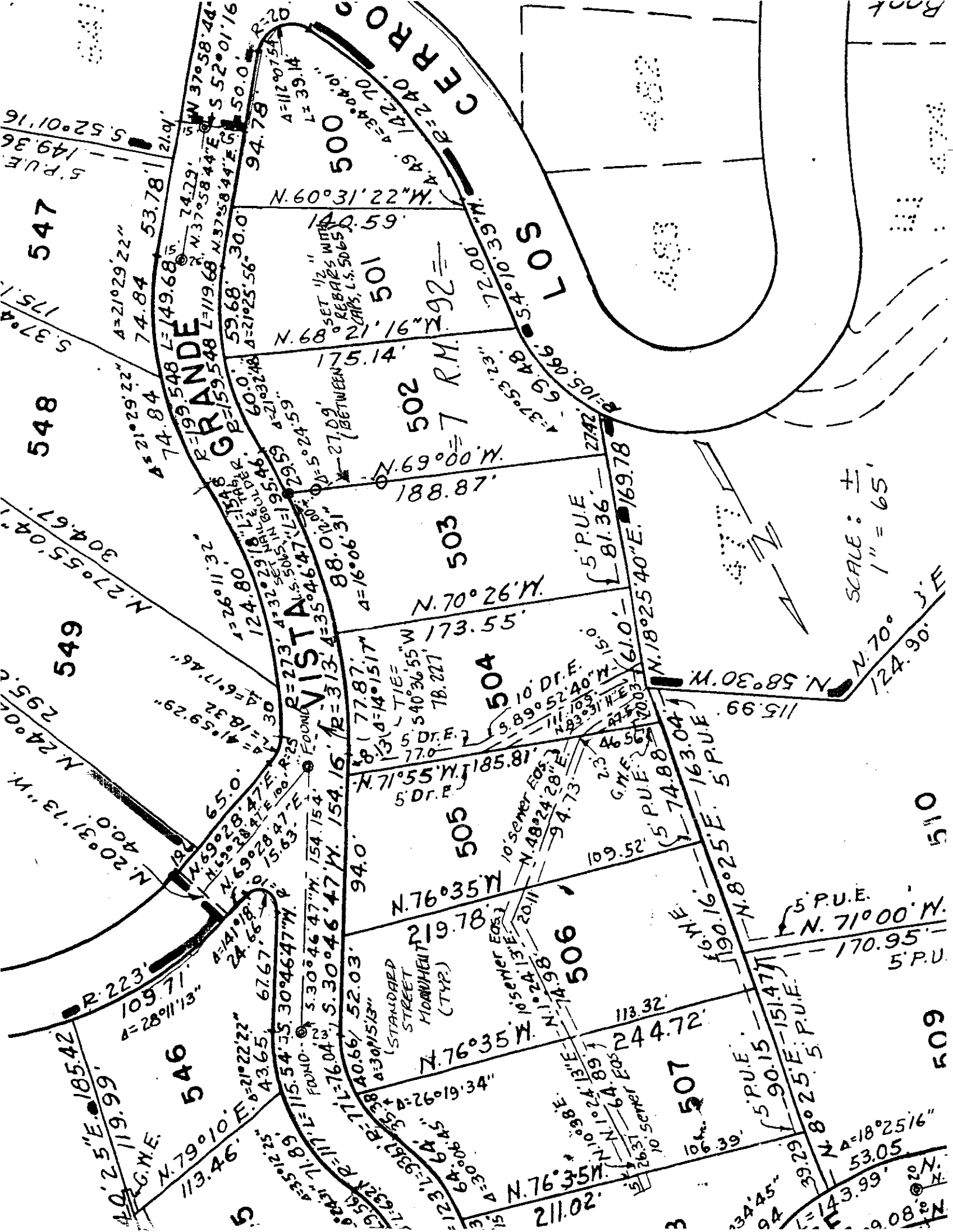
COUNTY SURVEYOR'S STATEMENT

This Corner Record was received January 4 ²⁰⁰⁰/₁₉ and examined and filed January 6 ²⁰⁰⁰/₁₉

Signed John M. Wooley Title Deputy



County Surveyor's Comment _____



GRANDE

CERRO

LOS

547

548

549

546

503

504

505

506

507

509

510

SCALE: ±
1" = 65'



S. P.U.E.
149.36
S. 37° 04'

N. 27° 55' 04"
304.67

N. 20° 31' 13" W.
240.0
N. 20° 31' 13" W.
295.0

A. 2' 5" E. 185.42
119.99
G.M.E.

A. 21° 29' 22" L. 74.84
A. 21° 29' 22" L. 74.84
R. = 199.548 L. = 149.68
N. 37° 58' 44" E. S. 52° 01' 16"

A. 26° 11' 32" L. 124.80
A. 32° 29' 18" L. 154.82
A. 26° 11' 32" L. 124.80

N. 71° 55' W. 185.81
5 D.F.E.
N. 71° 55' W. 185.81
5 D.F.E.

A. 21° 22' 22" L. 43.65
A. 21° 22' 22" L. 43.65
A. 28° 11' 13" L. 109.71

N. 22° 13' 09" W. 240.0
A. 112° 07' 54" L. 139.14
A. 112° 07' 54" L. 139.14

A. 16° 06' 31" L. 88.0
A. 16° 06' 31" L. 88.0
A. 35° 46' 47" L. 154.16

N. 76° 35' W. 19.78
N. 76° 35' W. 19.78
N. 76° 35' W. 19.78

A. 30° 08' 45" L. 64.94
A. 30° 08' 45" L. 64.94
A. 26° 19' 34" L. 113.32

N. 69° 00' W. 188.87
A. 37° 53' 23" L. 69.48
A. 37° 53' 23" L. 69.48

N. 70° 26' W. 173.55
A. 54° 36' 55" W. 78.227
A. 54° 36' 55" W. 78.227

N. 1° 24' 13" E. 20.11
A. 101° 38' E. 106.39
A. 101° 38' E. 106.39

N. 8° 25' E. 163.04
A. 18° 25' 16" L. 53.05
A. 18° 25' 16" L. 53.05

N. 69° 00' W. 188.87
A. 37° 53' 23" L. 69.48
A. 37° 53' 23" L. 69.48

N. 76° 35' W. 19.78
N. 76° 35' W. 19.78
N. 76° 35' W. 19.78

N. 1° 24' 13" E. 20.11
A. 101° 38' E. 106.39
A. 101° 38' E. 106.39

N. 8° 25' E. 163.04
A. 18° 25' 16" L. 53.05
A. 18° 25' 16" L. 53.05

N. 22° 13' 09" W. 240.0
A. 112° 07' 54" L. 139.14
A. 112° 07' 54" L. 139.14

N. 70° 26' W. 173.55
A. 54° 36' 55" W. 78.227
A. 54° 36' 55" W. 78.227

N. 1° 24' 13" E. 20.11
A. 101° 38' E. 106.39
A. 101° 38' E. 106.39

N. 8° 25' E. 163.04
A. 18° 25' 16" L. 53.05
A. 18° 25' 16" L. 53.05

N. 69° 00' W. 188.87
A. 37° 53' 23" L. 69.48
A. 37° 53' 23" L. 69.48

N. 70° 26' W. 173.55
A. 54° 36' 55" W. 78.227
A. 54° 36' 55" W. 78.227

N. 1° 24' 13" E. 20.11
A. 101° 38' E. 106.39
A. 101° 38' E. 106.39

N. 8° 25' E. 163.04
A. 18° 25' 16" L. 53.05
A. 18° 25' 16" L. 53.05

N. 22° 13' 09" W. 240.0
A. 112° 07' 54" L. 139.14
A. 112° 07' 54" L. 139.14

N. 70° 26' W. 173.55
A. 54° 36' 55" W. 78.227
A. 54° 36' 55" W. 78.227

N. 1° 24' 13" E. 20.11
A. 101° 38' E. 106.39
A. 101° 38' E. 106.39

N. 8° 25' E. 163.04
A. 18° 25' 16" L. 53.05
A. 18° 25' 16" L. 53.05

N. 69° 00' W. 188.87
A. 37° 53' 23" L. 69.48
A. 37° 53' 23" L. 69.48

N. 70° 26' W. 173.55
A. 54° 36' 55" W. 78.227
A. 54° 36' 55" W. 78.227

N. 1° 24' 13" E. 20.11
A. 101° 38' E. 106.39
A. 101° 38' E. 106.39

N. 8° 25' E. 163.04
A. 18° 25' 16" L. 53.05
A. 18° 25' 16" L. 53.05

N. 22° 13' 09" W. 240.0
A. 112° 07' 54" L. 139.14
A. 112° 07' 54" L. 139.14

N. 70° 26' W. 173.55
A. 54° 36' 55" W. 78.227
A. 54° 36' 55" W. 78.227

N. 1° 24' 13" E. 20.11
A. 101° 38' E. 106.39
A. 101° 38' E. 106.39

N. 8° 25' E. 163.04
A. 18° 25' 16" L. 53.05
A. 18° 25' 16" L. 53.05

N. 69° 00' W. 188.87
A. 37° 53' 23" L. 69.48
A. 37° 53' 23" L. 69.48

N. 70° 26' W. 173.55
A. 54° 36' 55" W. 78.227
A. 54° 36' 55" W. 78.227

N. 1° 24' 13" E. 20.11
A. 101° 38' E. 106.39
A. 101° 38' E. 106.39

N. 8° 25' E. 163.04
A. 18° 25' 16" L. 53.05
A. 18° 25' 16" L. 53.05

N. 22° 13' 09" W. 240.0
A. 112° 07' 54" L. 139.14
A. 112° 07' 54" L. 139.14

N. 70° 26' W. 173.55
A. 54° 36' 55" W. 78.227
A. 54° 36' 55" W. 78.227

N. 1° 24' 13" E. 20.11
A. 101° 38' E. 106.39
A. 101° 38' E. 106.39

N. 8° 25' E. 163.04
A. 18° 25' 16" L. 53.05
A. 18° 25' 16" L. 53.05

N. 69° 00' W. 188.87
A. 37° 53' 23" L. 69.48
A. 37° 53' 23" L. 69.48

N. 70° 26' W. 173.55
A. 54° 36' 55" W. 78.227
A. 54° 36' 55" W. 78.227

N. 1° 24' 13" E. 20.11
A. 101° 38' E. 106.39
A. 101° 38' E. 106.39

N. 8° 25' E. 163.04
A. 18° 25' 16" L. 53.05
A. 18° 25' 16" L. 53.05

N. 22° 13' 09" W. 240.0
A. 112° 07' 54" L. 139.14
A. 112° 07' 54" L. 139.14

N. 70° 26' W. 173.55
A. 54° 36' 55" W. 78.227
A. 54° 36' 55" W. 78.227

N. 1° 24' 13" E. 20.11
A. 101° 38' E. 106.39
A. 101° 38' E. 106.39

N. 8° 25' E. 163.04
A. 18° 25' 16" L. 53.05
A. 18° 25' 16" L. 53.05

N. 69° 00' W. 188.87
A. 37° 53' 23" L. 69.48
A. 37° 53' 23" L. 69.48

N. 70° 26' W. 173.55
A. 54° 36' 55" W. 78.227
A. 54° 36' 55" W. 78.227

N. 1° 24' 13" E. 20.11
A. 101° 38' E. 106.39
A. 101° 38' E. 106.39

N. 8° 25' E. 163.04
A. 18° 25' 16" L. 53.05
A. 18° 25' 16" L. 53.05

N. 1° 08' W. 21.08
A. 143.99
A. 143.99

N. 2° W. 19.08

N. 2° W. 19.08

N. 2° W. 19.08