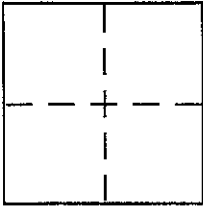


CORNER RECORD

Document Number 70-041-11 & 12

City of GREENBRAE County of MAKIN, California

Brief Legal Description LOTS 506 & 507, MAP OF GREENBRAE, SUB. 4 7 MAPS 92



CORNER TYPE

Government Corner  Control   
Meander  Property   
Rancho  Other   
Date of Survey APRIL 11, 2001

COORDINATES (Optional)

N. \_\_\_\_\_  
E. \_\_\_\_\_  
Zone \_\_\_\_\_ NAD27  NAD83   
NAD83 Epoch \_\_\_\_\_  
Elev. \_\_\_\_\_  
Vert. Datum: NGVD29  NAVD88   
Meas. Units: Metric  Imperial

Corner - Left as found  Found and tagged  Established  Reestablished  Rebuilt

Identification and type of corner found: Evidence used to identify or procedure used to establish or reestablish the corner:

REESTABLISH THE COMMON LOT LINE BETWEEN LOT 506 & LOT 507 OF THE MAP OF GREENBRAE SUB. 4, 7 MAPS 92 FROM EXISTING STANDARD MONUMENTS ON VISTA GRANDE & AS SAID MONUMENTS ARE DEPICTED UPON THE MAP OF RECORD. SEE SKETCH ON REVERSE SIDE.

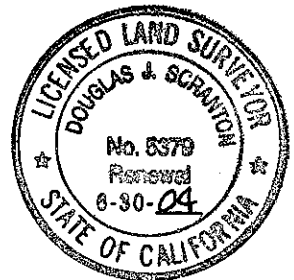
A description of the physical condition of the monument as found and as set or reset:

SET 1/2" REBAR WITH PLS CAP LS 5379 AFFIXED TO TOP & DRIVEN FLUSH WITH GROUND GRADE. SET FRONT & REAR CORNER OF COMMON LINE WITH LINE POINTS AT RANDOM INTERVALS

SURVEYOR'S STATEMENT

This Corner Record was prepared by me or under my direction in conformance with the Land Surveyor's Act on APRIL 17th 2001

Signed Douglas & Scranton P.L.S. or R.C.E. No. PLS 5379  
Renewal 6.30.2004



COUNTY SURVEYOR'S STATEMENT

This Corner Record was received APRIL 18, 2001

and examined and filed APRIL 19, 2000

Signed [Signature] P.L.S. or R.C.E. No. 7128

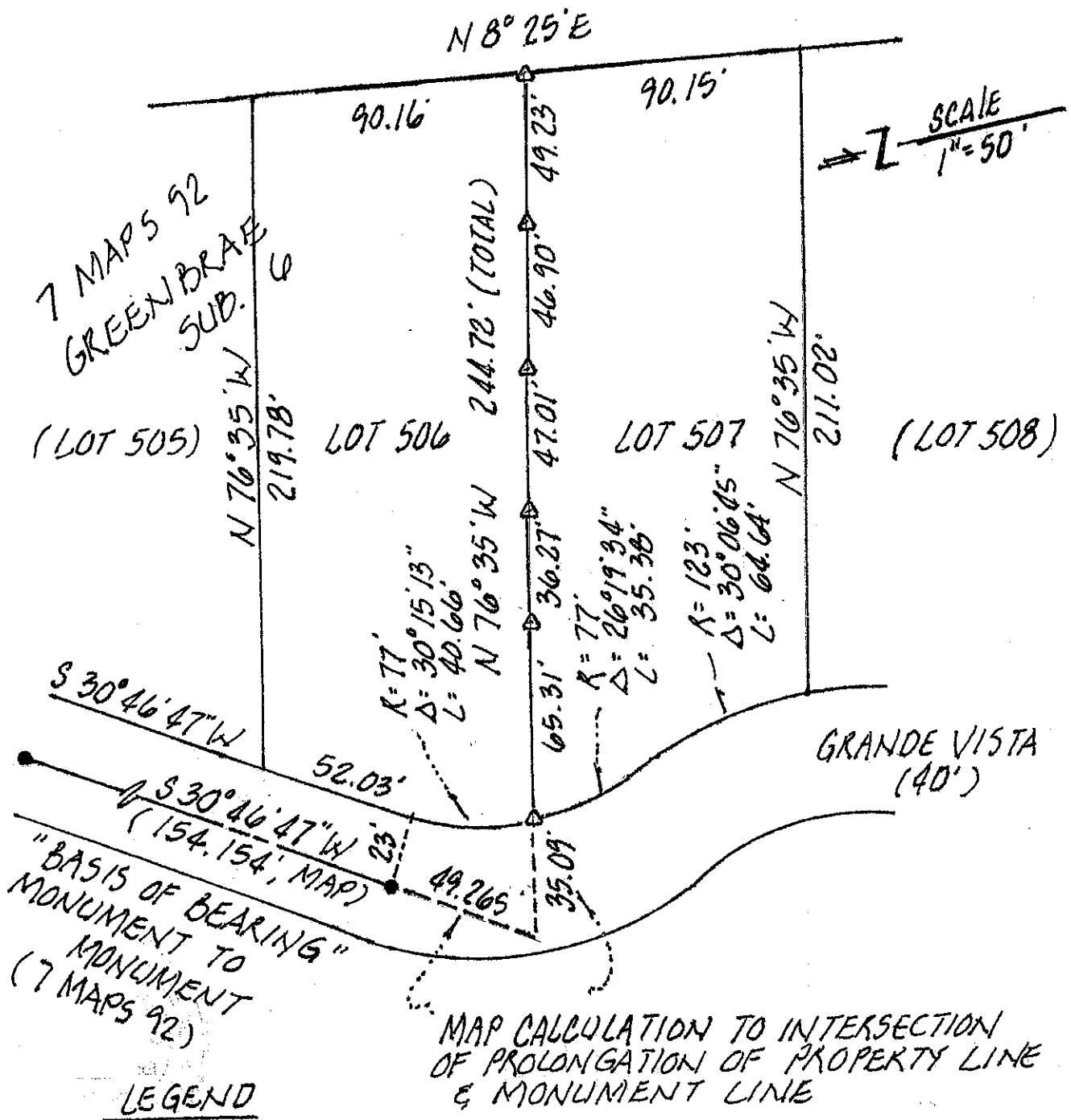
Title DEPUTY



County Surveyor's Comment \_\_\_\_\_

Prepared BY DJ SCRANTON SURVEYING 845 OLIVE #208 NOV 26, 01

ALL DISTANCES ARE GIVEN IN FEET  
 & DECIMALS THEREOF



SCALE  
 1" = 50'

7 MAPS 92  
 GREENBRAE  
 SUB. 6

(LOT 505)

LOT 506

LOT 507

(LOT 508)

GRANDE VISTA  
 (40')

"BASIS OF BEARING"  
 MONUMENT TO  
 MONUMENT  
 (7 MAPS 92)

MAP CALCULATION TO INTERSECTION  
 OF PROLONGATION OF PROPERTY LINE  
 & MONUMENT LINE

LEGEND

- △ set 1/2" rebar WITH PLS CAP LS 5379
- STANDARD STREET MONUMENT OF 7 MAPS 92

NOTE: NO EASEMENTS ARE DEPICTED