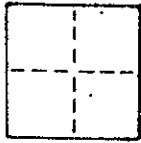


CORNER RECORD

COUNTY OF MARIN T. _____ R. _____ MERIDIAN _____ CALIFORNIA

CORNER TYPE: GOVT. CORNER MEANDER RANCHO CONTROL OTHER

CORNER IDENTIFICATION — DATE OF VISIT _____ 19____



CORNER — LEFT AS FOUND FOUND AND TAGGED REESTABLISHED OBLITERATED CORNER REBUILT

PHYSICAL DESCRIPTION OF CORNER FOUND; EVIDENCE AND METHOD USED TO IDENTIFY OR REESTABLISH

Set a 3/4" iron pipe with plastic plug "LS 3775" at the southwesterly corner of lot 523 "Map of Greenbrae Sub. No. Six" filed in Book 7 of Maps at page 92, Marin County Records.

PHYSICAL DESCRIPTION OF MONUMENTS REBUILT OR PERPETUATED

As Shown

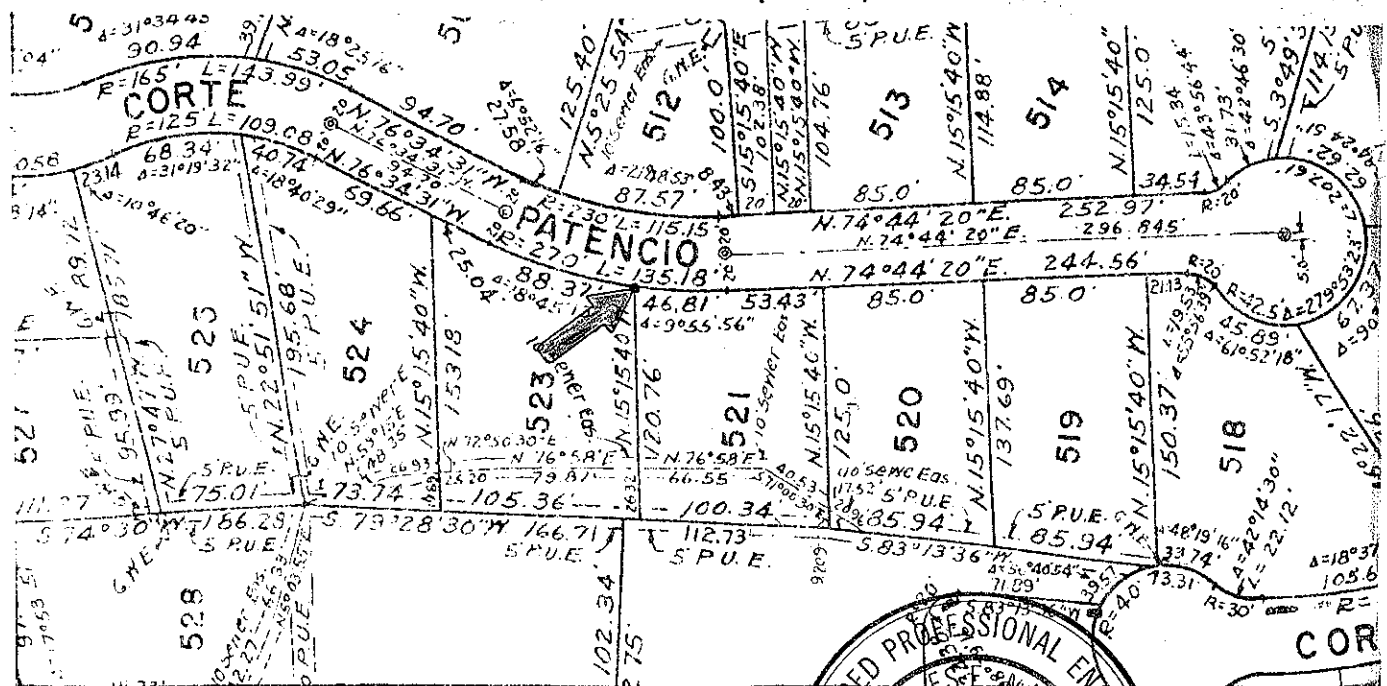
AP No. 70-011-12
Clark J 1430

CALIFORNIA COORDINATE SYSTEM ORDER: FIRST SECOND THIRD

STATIONS USED: NGS (USC & GS) STATE COUNTY OTHER STATION _____ STATION _____

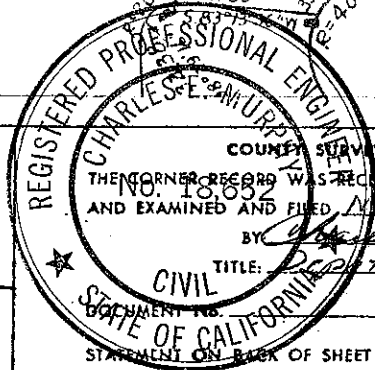
ZONE _____ ELEVATION _____ NORTHINGS (Y) _____ EASTINGS (X) _____

SKETCH: (Include reference tie or witness points, remarks and topo of area)



SURVEYOR'S CERTIFICATE
THIS CORNER RECORD WAS PREPARED BY _____ OR UNDER MY DIRECTION IN CONFORMANCE WITH THE LAND SURVEYORS ACT ON November 15, 1985 BY JOSEPH GRIPPI

SIGNED _____
L.S. or R.C.E. No. LS 3775



COUNTY SURVEYOR'S CERTIFICATE
THE CORNER RECORD WAS RECEIVED Nov 27 1985 AND EXAMINED AND FILED Nov 27 1985 BY _____ TITLE: Deputy County Surveyor

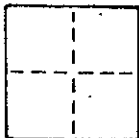
STATE OF CALIFORNIA
DOCUMENT NO. _____
STATEMENT ON BACK OF SHEET

CORNER RECORD

COUNTY OF MARIN T. _____ R. _____ MERIDIAN _____ CALIFORNIA

CORNER TYPE: GOVT. CORNER MEANDER RANCHO CONTROL OTHER

CORNER IDENTIFICATION — DATE OF VISIT _____ 19____



CORNER — LEFT AS FOUND FOUND AND TAGGED REESTABLISHED OBLITERATED CORNER REBUILT

PHYSICAL DESCRIPTION OF CORNER FOUND; EVIDENCE AND METHOD USED TO IDENTIFY OR REESTABLISH

Set a 3/4" iron pipe with plastic plug "LS 3775" at the southeasterly corner of lot 523, "Map of Greenbrae Sub. No. Six" filed in Book 7 of Maps at page 92, Marin County Records.

PHYSICAL DESCRIPTION OF MONUMENTS REBUILT OR PERPETUATED

As Shown

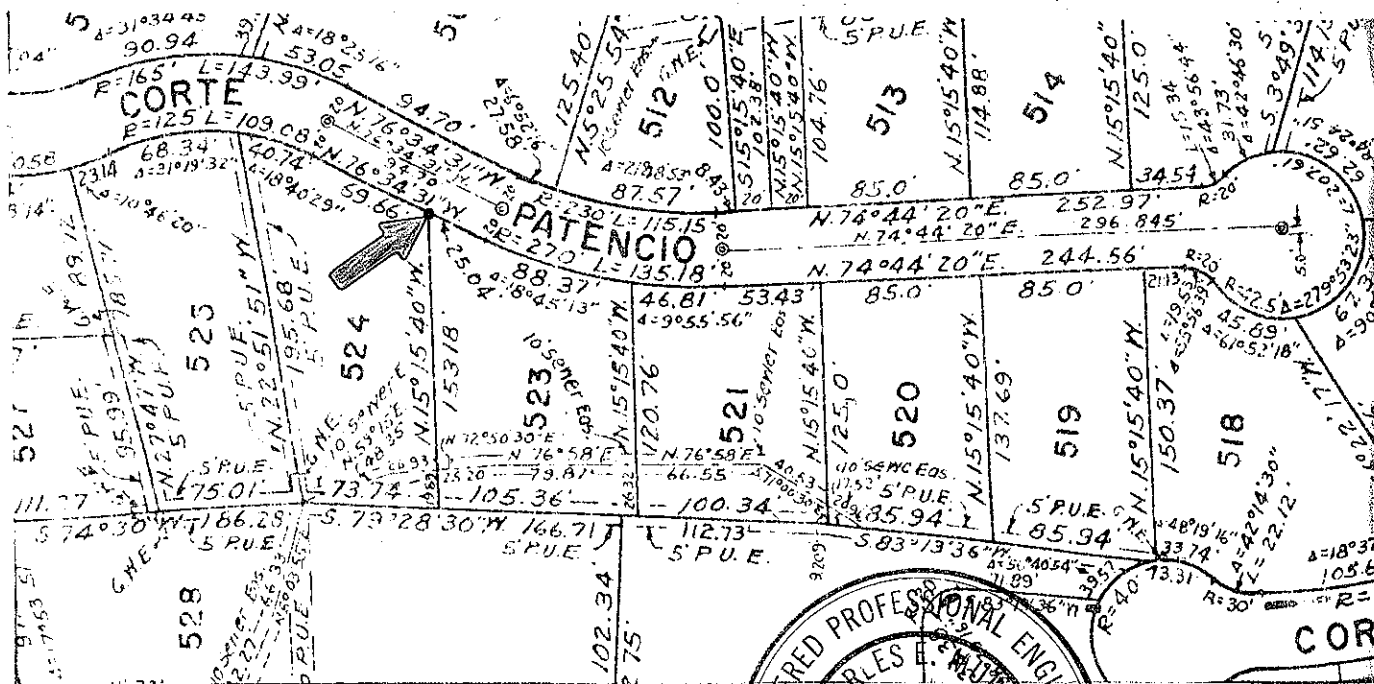
AP No. 70-011-12
Clark J 1430

CALIFORNIA COORDINATE SYSTEM ORDER: FIRST SECOND THIRD

STATIONS USED: NGS (USC & GS) STATE COUNTY OTHER STATION _____ STATION _____

ZONE _____ ELEVATION _____ NORTHINGS (Y) _____ EASTINGS (X) _____

SKETCH: (Include reference tie or witness points, remarks and topo of area)



SURVEYOR'S CERTIFICATE
THIS CORNER RECORD WAS PREPARED BY ME OR UNDER MY DIRECTION IN CONFORMANCE WITH THE LAND SURVEYORS ACT ON November 27 1985
SIGNED: Joseph Chappi
L.S. or R.C.E. No.: LS 3775

REGISTERED PROFESSIONAL ENGINEER
No. 18652
COUNTY SURVEYOR'S CERTIFICATE
THE CORNER RECORD WAS RECEIVED Nov 27 1985
AND EXAMINED AND FILED Nov 27 1985
BY: Charles E. Murphy
Deputy County Surveyor
CIVIL
STATE OF CALIFORNIA

STATEMENT ON BACK OF SHEET

YES NO