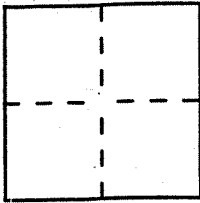


# CORNER RECORD

Document Number 65-360-01, 02, & 03  
County of MARIN, California

City of SAUSALITO  
Brief Legal Description PCL 1 9 PM 34



### CORNER TYPE

Government Corner  Control   
Meander  Property   
Rancho  Other   
Date of Survey 8/4/95

### COORDINATES (Optional)

N. \_\_\_\_\_  
E. \_\_\_\_\_  
Zone \_\_\_\_\_ Datum \_\_\_\_\_  
Elev. \_\_\_\_\_

Corner — Left as found  Found and tagged  Established  Reestablished  Rebuilt

Identification and type of corner found: Evidence used to identify or procedure used to establish or reestablish the corner:

SET 1/2" REBAR AT PROPERTY CORNERS ALONG E'LY  
LINE OF PCL 1 9 PM 34 USING FOUND STREET MONUMENTS  
AS CONTROL (SEE SKETCH SHEET 2)

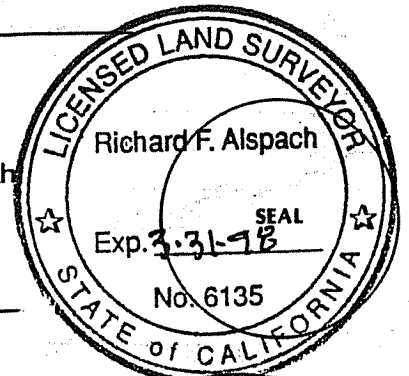
A description of the physical condition of the monument as found and as set or reset:

SET 1/2" REBAR, W/ PLASTIC CAP L/S 6135

### SURVEYOR'S STATEMENT

This Corner Record was prepared by me or under my direction in conformance with the Land Surveyors' Act on AUGUST 8 1995.

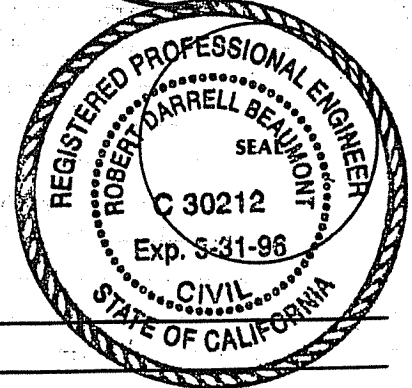
Signed Richard F. Alspach L.S. or R.C.E. Number LS 6135



### COUNTY SURVEYOR'S STATEMENT

This Corner Record was received 8-11 1995 and examined and filed 8-11 1995.

Signed HERA Title DCS

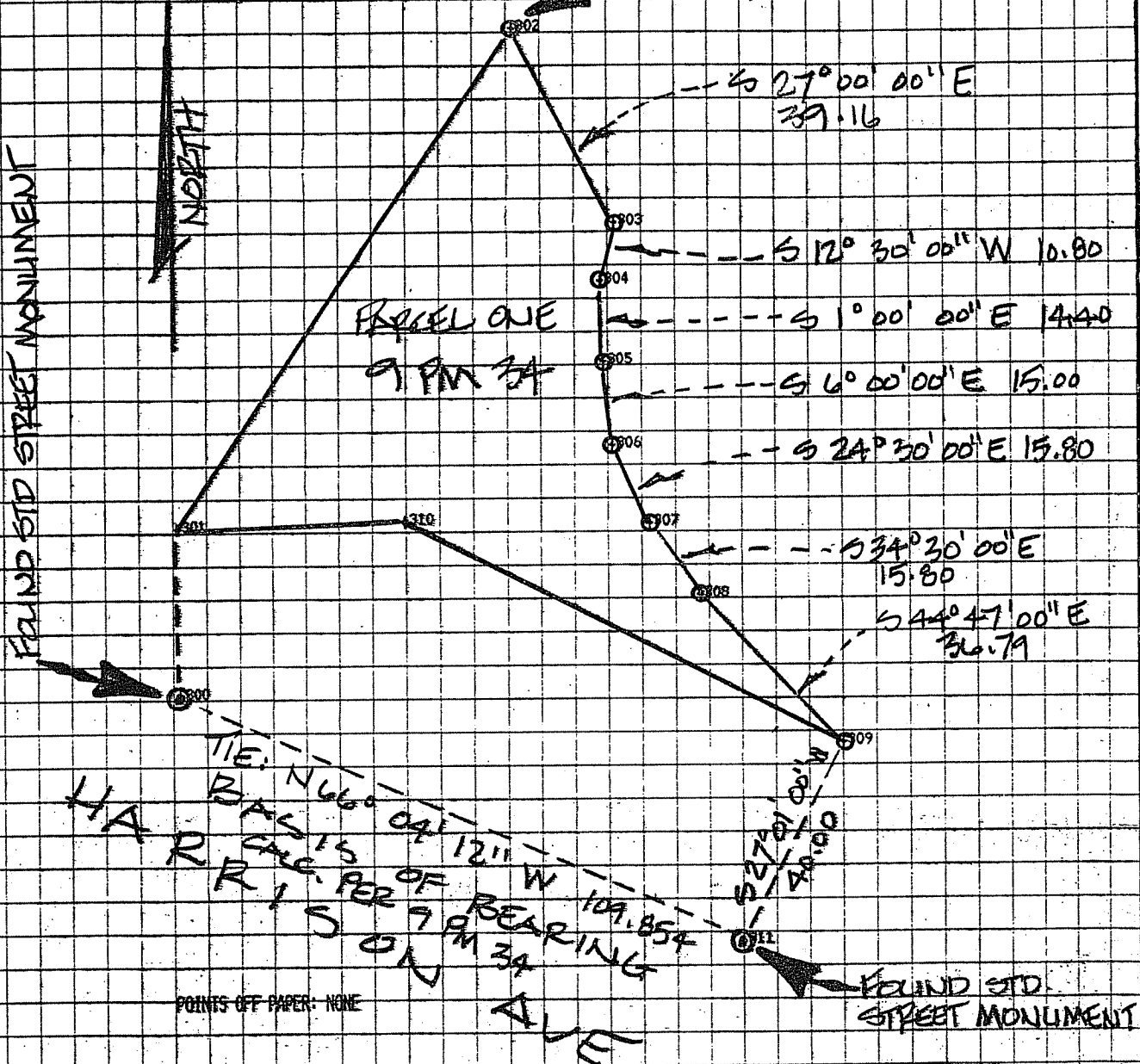


County Surveyor's Comment \_\_\_\_\_  
\_\_\_\_\_  
\_\_\_\_\_

CC-PLOT output, date= 08-07-1995, time: 3:09:12 PM, FILE= LANG252.CCC

PLOT SCALE: 1 inch = 30 feet  
NORTH IS ROTATED 0 DEGREES CLOCKWISE.

SET 1/2" REBAR & CAP "LS 6135"  
(TYPICAL)



FRAGILE ONE  
9 PM 34

HARRIS  
PER OF BEARING  
ON 9 PM 34

POINTS OFF PAPER: NONE

NOTE: SET REBAR MONUMENTS ALONG ELY LINE OF PCL  
PER RECORD DIMENSIONS SHOWN ON 9 PM 34