

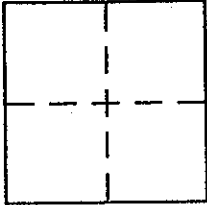
CORNER RECORD

Document Number AP. N^e 065-311-39

City of SAUSALITO

County of MARIN, California

Brief Legal Description PARCEL 3, REVISED PARCEL MAP (12 PM 13)



CORNER TYPE

Government Corner Control
Meander Property
Rancho Other
Date of Survey _____

COORDINATES (Optional)

N. _____
E. _____
Zone _____ NAD27 NAD83
NAD83 Epoch _____
Elev. _____
Vert. Datum: NGVD29 NAVD88
Meas. Units: Metric Imperial

Corner - Left as found Found and tagged Established Reestablished Rebuilt

Identification and type of corner found: Evidence used to identify or procedure used to establish or reestablish the corner:

FOUND STREET MONUMENTS AS PER
PARCEL MAP (12 PM 13)

A description of the physical condition of the monument as found and as set or reset: SET 3/4" I.P. AND
PLASTIC PLUG, RCE 30465; SEE PAGE 2

SURVEYOR'S STATEMENT

This Corner Record was prepared by me or under my direction in conformance with the Land Surveyor's Act on AUG. 9 2004

Signed [Signature] P.L.S. or R.C.E. No. 30465



COUNTY SURVEYOR'S STATEMENT

This Corner Record was received AUGUST 10, 2004

and examined and filed AUGUST 11, 2004

Signed [Signature] P.L.S. or R.C.E. No. 7128

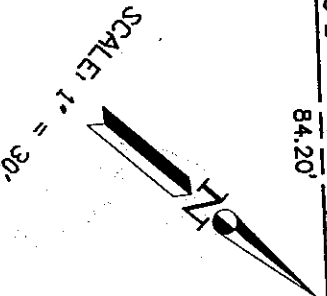
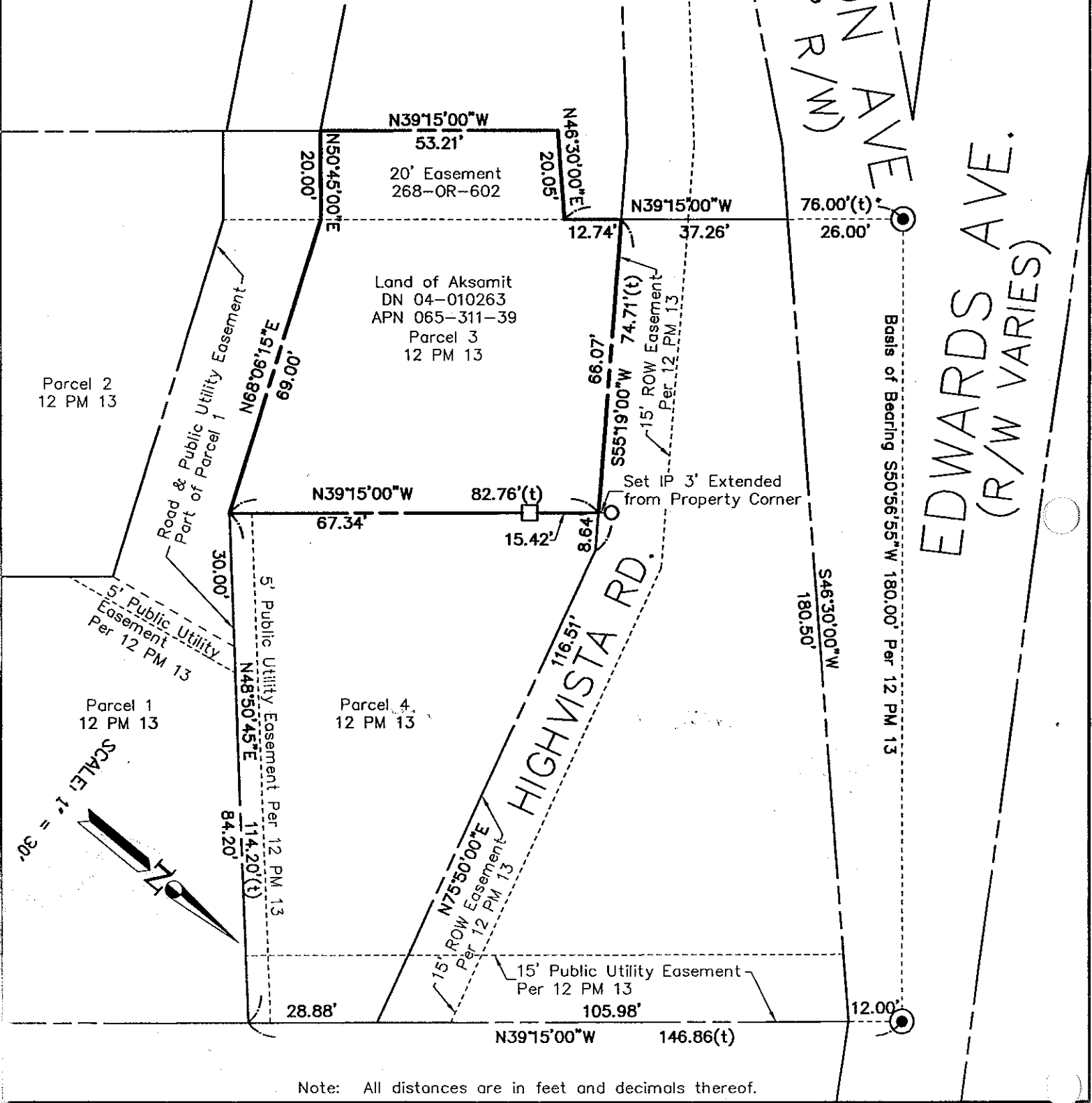
Title COUNTY SURVEYOR



County Surveyor's Comment _____

LEGEND

- FOUND STD. STREET MONUMENT PER 12 PM 13
- SET 3/4" I.P. & PLASTIC PLUG, RCE 30465
- SET WOOD HUB & TACK / GINNEY
- (t) DENOTES TOTAL



Note: All distances are in feet and decimals thereof.

SHEET	1	OF	1
SCALE:	1" = 30'	DESIGN:	AS
DATE:	5/10/04	DRAWN:	AS
FILE:	2004-071	CHECKED:	J.L.H

J.L. ENGINEERING
CIVIL ENGINEERS—LAND SURVEYORS
 1539 4th ST., SAN RAFAEL, CA. 94901 (415) 457-6647

Corner Record
 Lands of Aksamit— 11 Marion Ave
 APN 065-311-39, Sausalito, Marin County, CA